

MEWP Familiarization: MEC MME20

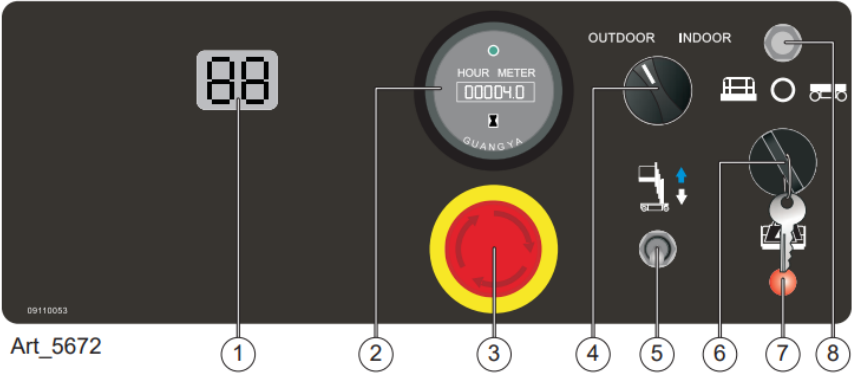
MME20 Familiarization

(ANSI A92.22 6.2.5)

- 6.2.5.1 Prior to user's authorization of an operator to use a specific model of MEWP, the user must ensure the operator is familiarized on the following, and as specified by the manufacturer.
- Do not operate your MEWP until you have read and understood the Manufacturer's Operator Manual, have performed the workplace inspection, pre-start inspection, routine maintenance, and have completed all the test operations detailed in the operating instructions section of your manual.
- Manual location is in manual enclosure on the inside of the front guardrail.
- Confirm that the required manual(s) as specified by the manufacturer are with the MEC MME20.

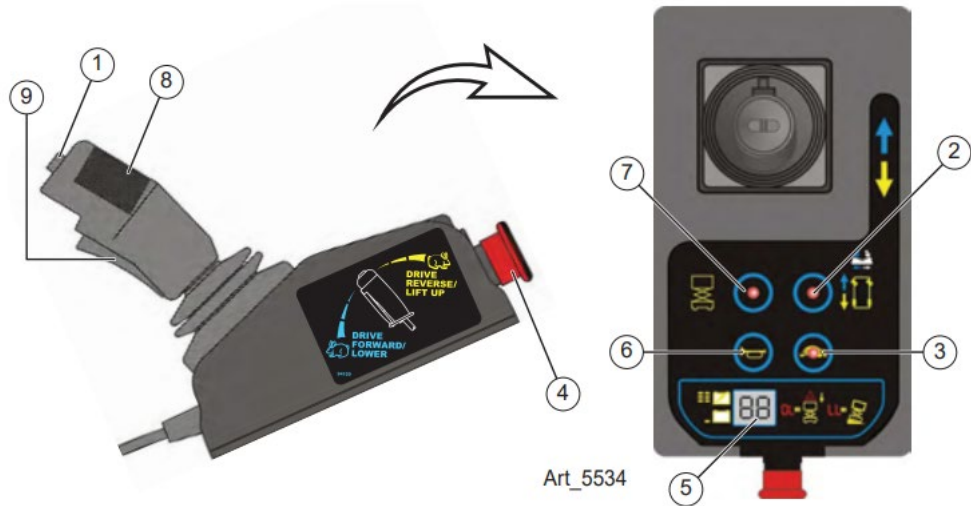


Lower Control Panel



Control		Description
1	LED	Diagnostic displays codes and battery charge indicator.
2	Hour Meter	The hour meter displays the number of hours the machine has operated.
3	Emergency Stop Switch	Press the EMERGENCY STOP switch at any time to stop all machine functions. Pull button out to the on position to operate the machine.
4	Indoor/Outdoor Switch	INDOOR Select to allow unrestricted height when indoors.
		OUTDOOR Select to limit the maximum height when outdoors.
5	Platform Up / Down Switch	With the Key Switch in the BASE position, move this switch up to lift the platform or down to lower the platform.
6	Key Switch	PLATFORM Turn the key switch to the platform position and the platform controls will be selected.
		OFF Turn the key switch to the off position and the machine will be off.
		BASE Turn the key switch to the base position and the ground controls will be selected.
7	Overload Indicator Light	Light on indicates when platform is overloaded.
8	Circuit Breaker	When the current was overloaded, the circuit breaker will protect the circuit.

Upper Control Panel



Control		Description
1	Thumb Rocker Switch	Press the thumb rocker switch in either direction to activate steer function.
2	Drive Select	Press this button to select the drive function.
3	Drive Speed Button	Press this button to activate the slow or fast drive function.
4	Emergency Stop Switch	Press the EMERGENCY STOP switch at any time to stop all machine functions. Pull the button out to the on position to operate the machine.
5	LED Display	Indicates the state of battery charge and displays diagnostic codes when necessary.
6	Horn Button	Press to sound warning horn.
7	Lift Select	Press this button to select the Lift function.
8	Proportional Control Handle	DRIVE Proportionally controls Forward and Reverse travel.
		LIFT Proportionally controls Lift and Lower functions.
9	Function Enable Switch	Function Enable Switch for LIFT & DRIVE & STEER functions.

Lift function

- Press the Lift Select switch. Squeeze the Function Enable Switch then move the control handle in the direction indicated by the yellow arrow and the platform will raise. Squeeze the Function Enable Switch then move the control handle in the direction indicated by the blue arrow and the platform will lower. The descent alarm will sound while the platform is lowering.

Drive function

- Press the Drive Select switch. Squeeze the Function Enable Switch then move the control handle in the direction indicated by the blue arrow on the control panel and the machine will move in the direction that the blue arrow points. Squeeze the Function Enable Switch then move the control handle in the direction indicated by the yellow arrow on the control panel and the machine will move in the direction that the yellow arrow points.

Additional Emergency Controls, Features & Limitations



Emergency Battery
Disconnect

Emergency
Lowering

- **Max. Platform Height:** 20 ft. Indoor / 16 ft. Outdoor
- **Max. Platform Capacity:** 350 lbs., 1 person
- **Deck Extension Capacity:** 350 lbs.
- **Max. Chassis Inclination:** 1.5° side, 3° inline
- **Max. Wind Speed:** 28 mph (45 kph) outdoors
- **ELECTROCUTION HAZARD! THIS MACHINE IS NOT INSULATED!**
- See operator's manual for additional information and instructions for safe use.

Operating Characteristics

Features:

- Non-Marking Tires
- Removeable Upper Controls
- Hour Meter
- Direct electric drive for longer duty cycle
- 21" rollout deck extension
- Charger and power to platform connect to single outlet on chassis

Options:

- 900v Inverter
- Cold Weather Package
- Proactive Platform Safety System® (PPSS) senses overhead obstructions
- Leak Containment System® (LCS) Patent #11,112,060
- Ceiling Grid Platform (22 in. x 22 in. / 56 cm x 56 cm)
- Tool Tray
- Second Year Extended Warranty

*See operator's manual for specific options and feature characteristics.

For More Information

Contact your local Dealer, Rental Provider or MEC Aerial Work Platforms.

MEC Aerial Work Platforms

- +1 (877) 632-5438
- +1 (559) 842-1500
- info@MECawp.com

MEC Parts

- +1 (559) 842-1523
- parts@MECawp.com

MEC Product Support

- +1 (559) 842-1537
- service@MECawp.com

MEC Address & Website

- 1401 S Madera Ave,
Kerman, Ca 93630
- www.MECawp.com

This information is provided as product familiarization as called for by ANSI A92.22. and CSA B 354. It is not intended to take the place of information provided by the MEC Operators manual or instruction provided by your equipment supplier. Further, all operators are to be trained before operating this equipment. Please contact MEC Aerial Work Platforms if you require additional information.

