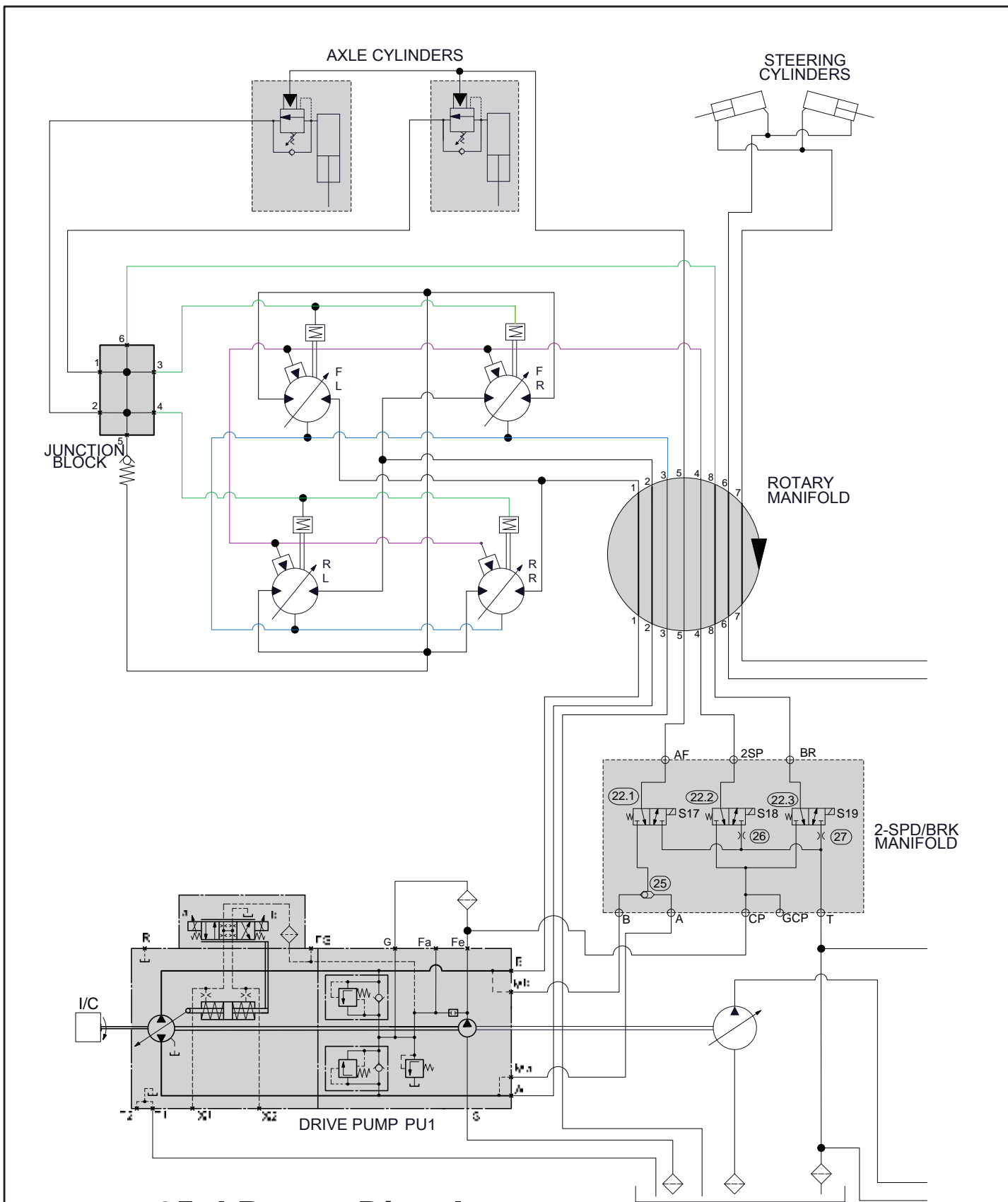


# Hydraulic Schematic, Part 1

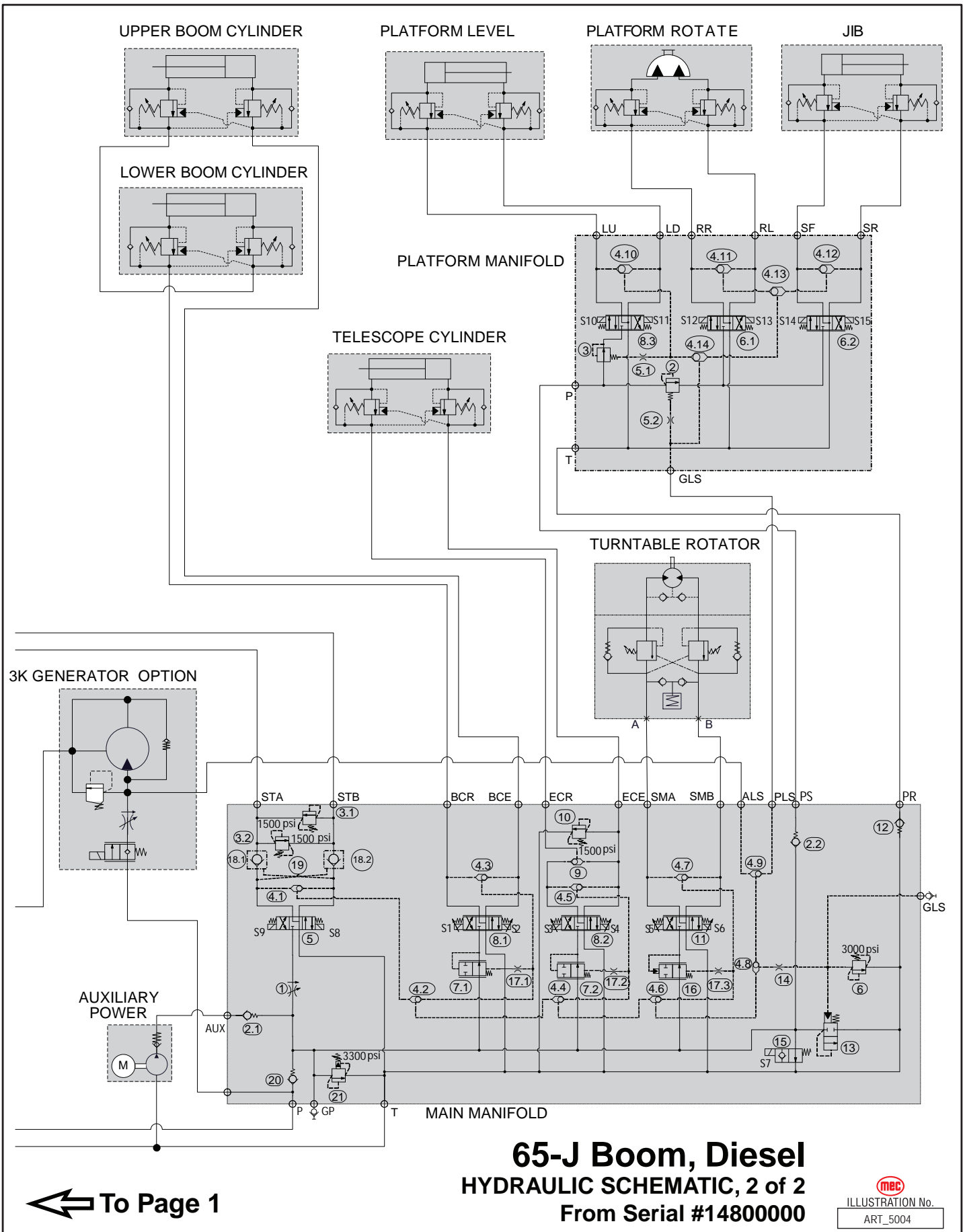


**65-J Boom, Diesel**  
**HYDRAULIC SCHEMATIC, 1 of 2**  
**From Serial #1480000**

To Page 2 ➡

**MEC**  
 ILLUSTRATION No.  
 ART\_5003

# Hydraulic Schematic, Part 2



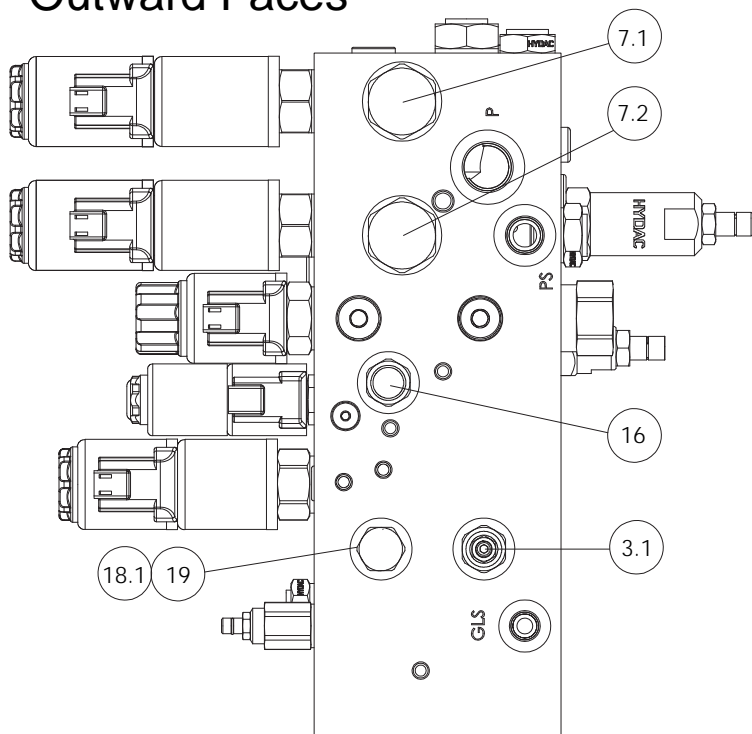
← To Page 1

**65-J Boom, Diesel**  
**HYDRAULIC SCHEMATIC, 2 of 2**  
**From Serial #1480000**

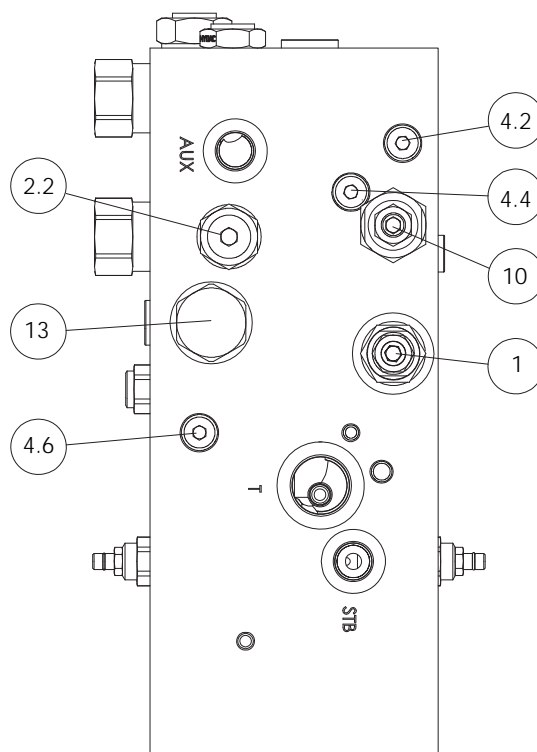
**mec**  
ILLUSTRATION No.  
ART\_5004

# Primary Functions Manifold, Part 1

## Outward Faces

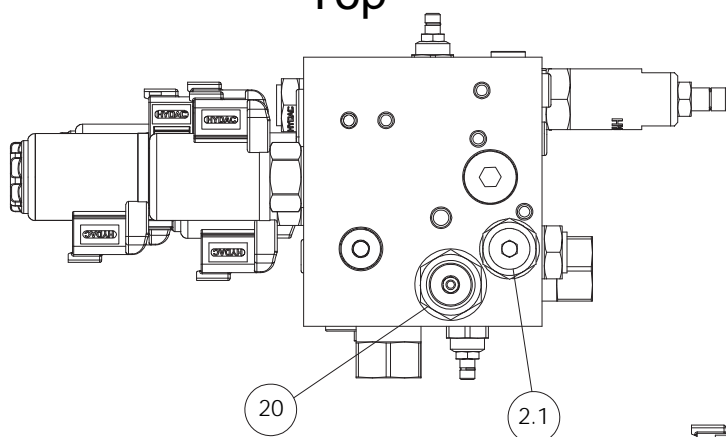


Rearward

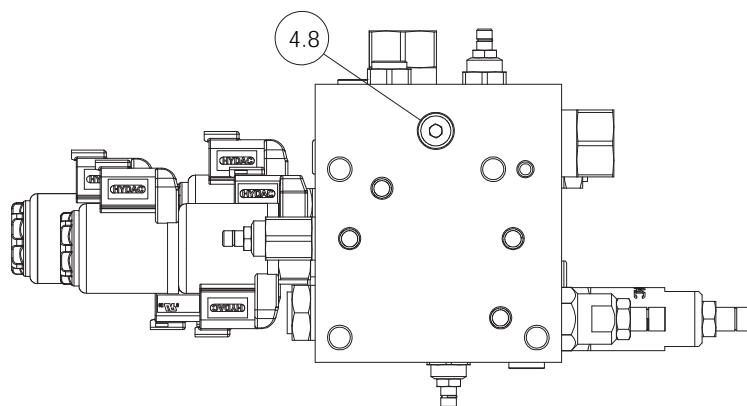


Forward

## Top



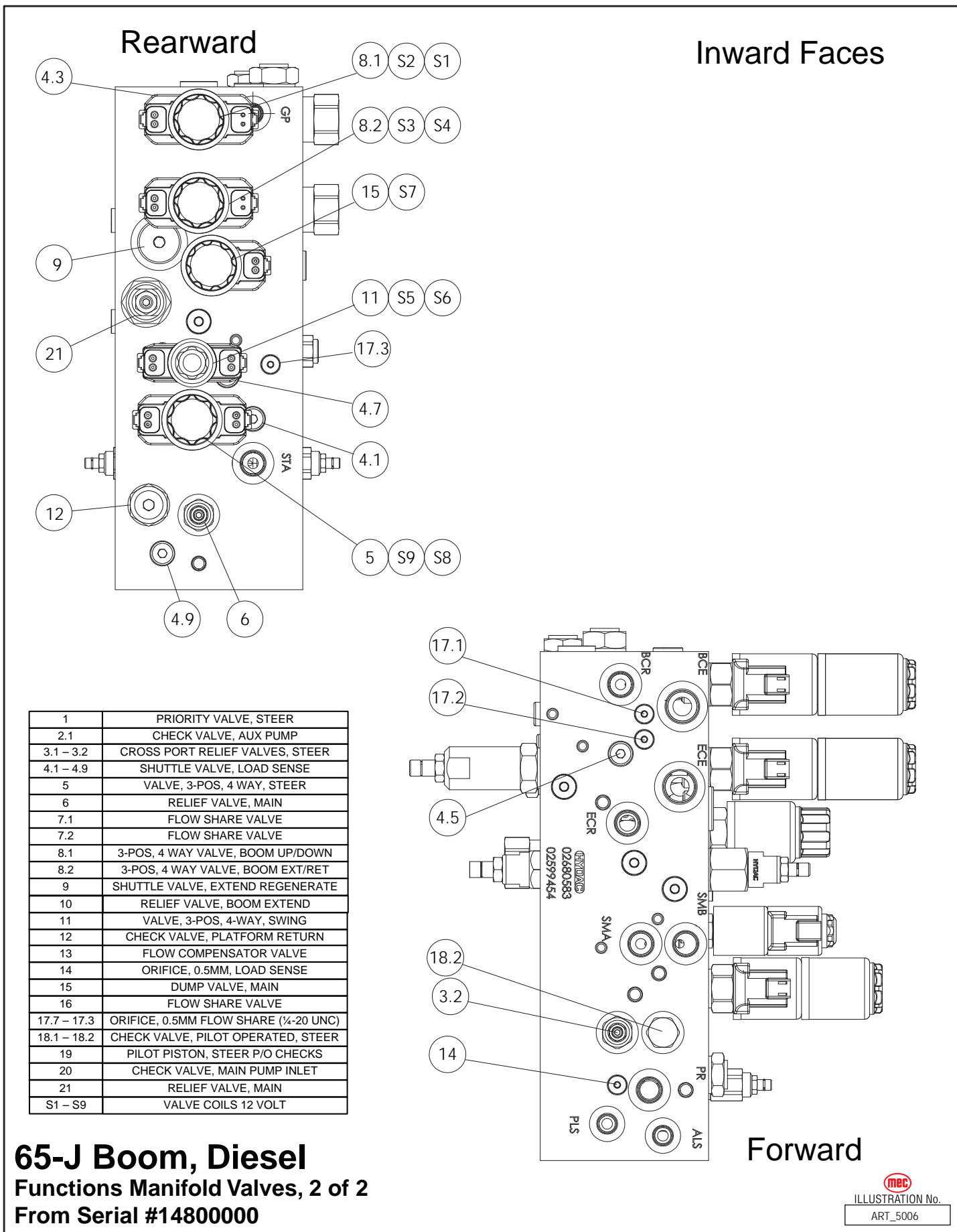
## Bottom



**65-J Boom, Diesel**  
Functions Manifold Valves, 1 of 2  
From Serial #14800000

  
ILLUSTRATION No.  
ART\_5005

# Primary Functions Manifold, Part 2



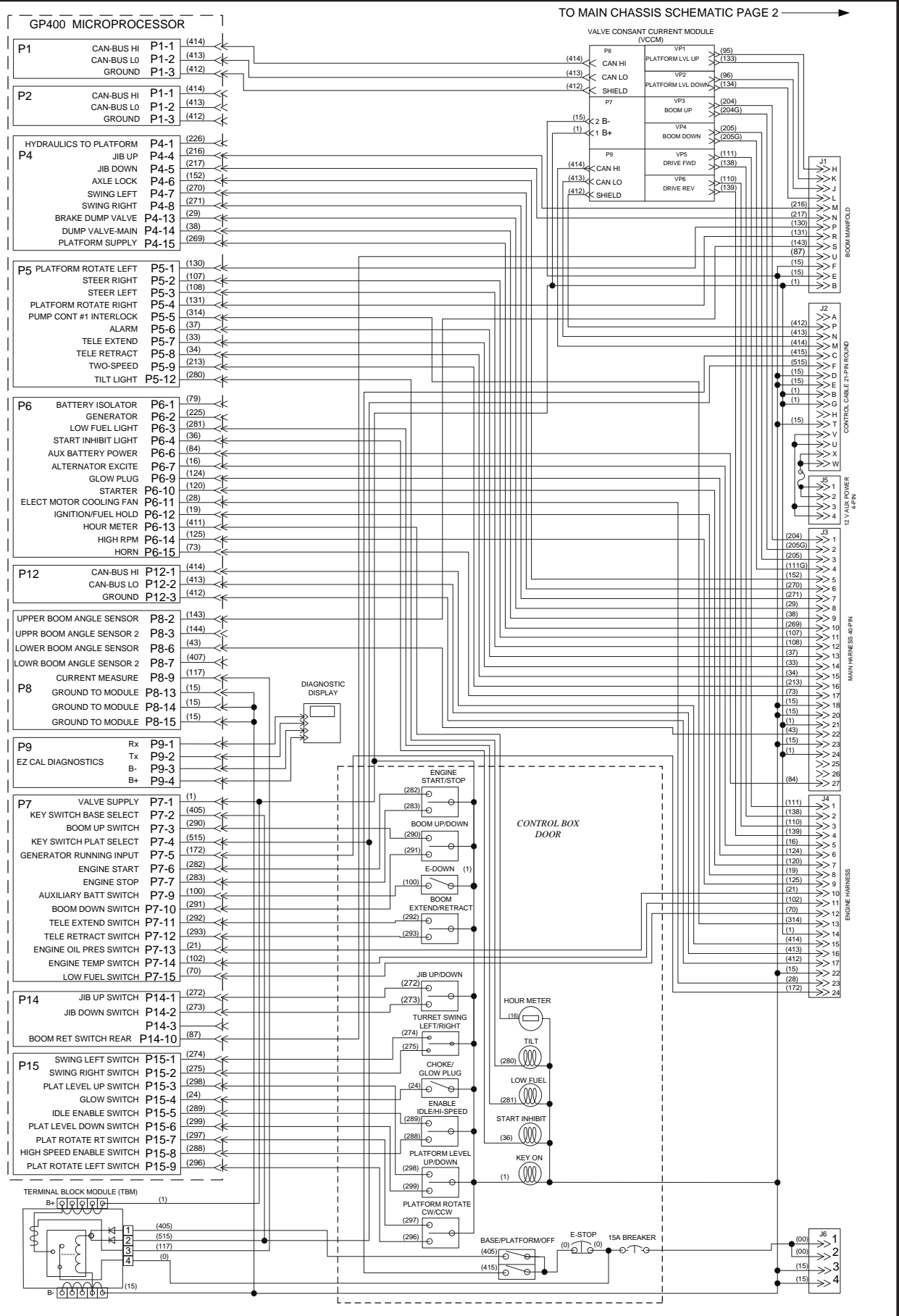
**65-J Boom, Diesel**  
**Functions Manifold Valves, 2 of 2**  
**From Serial #14800000**

  
 ILLUSTRATION No.  
 ART\_5006

# Electric Schematic, Lower Control Box, Standard Machines

**STANDARD MACHINES -- Lower Controls Box**

SCHEMATIC -- Lower Controls Publication Art #: ART\_4917  
 65-J Diesel - From Serial #14800000 Reference Art #: 28870

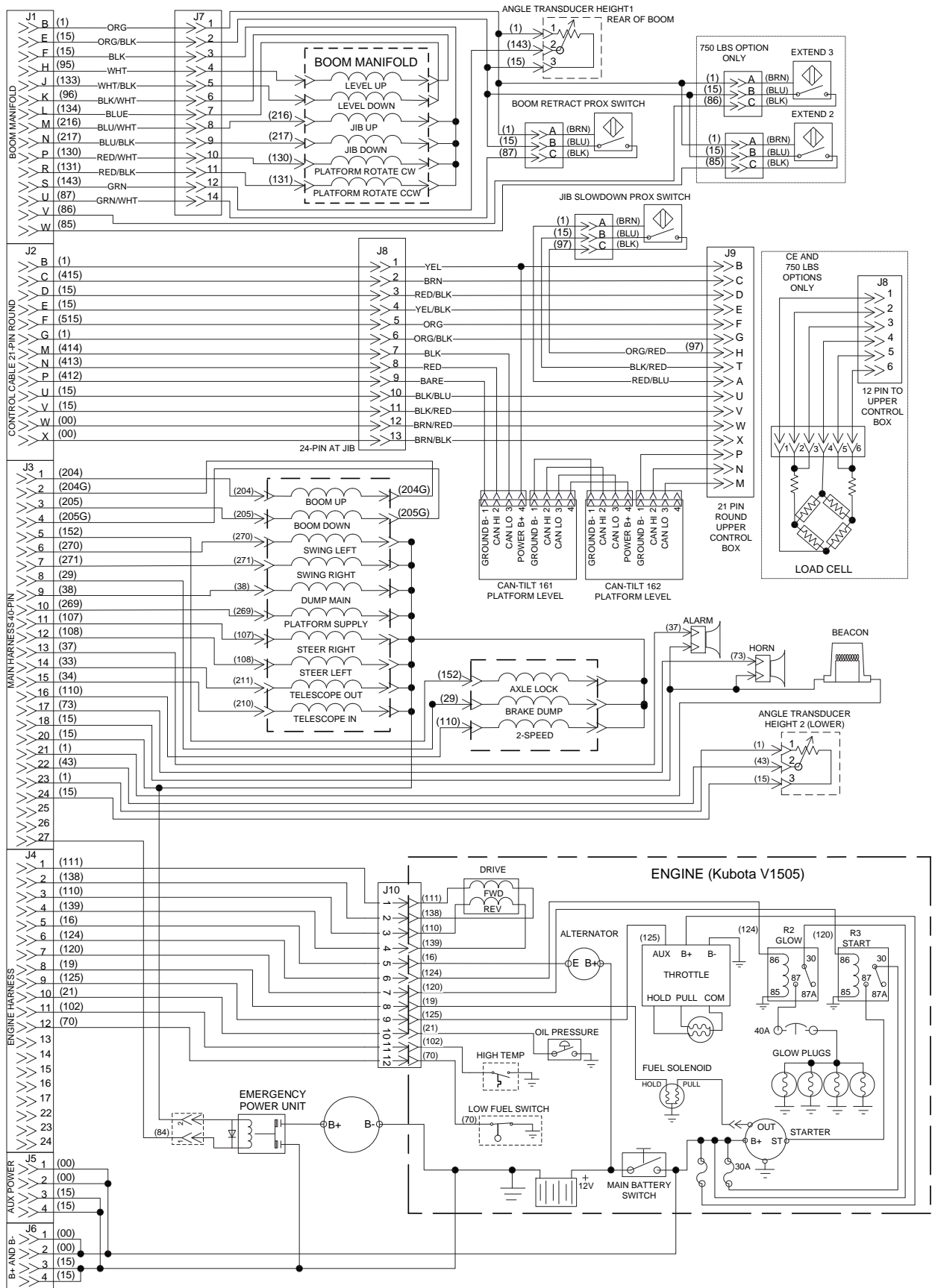


# Electric Schematic, Chassis, Standard Machines

**STANDARD MACHINES -- Chassis**

SCHEMATIC -- Lower Controls Publication Art #: ART\_4918  
 Reference Art #: 28871

65-J Diesel - From Serial #14800000



# Electric Schematic, Upper Controls Box, All Machines

SCHEMATIC -- Lower Controls Publication Art #: ART\_4921  
 Reference Art #: 28872  
 65-J Diesel - From Serial #14800000

**ALL MACHINES -- Upper Controls Box**

