

## MEWP Familiarization: Micro 19-XD

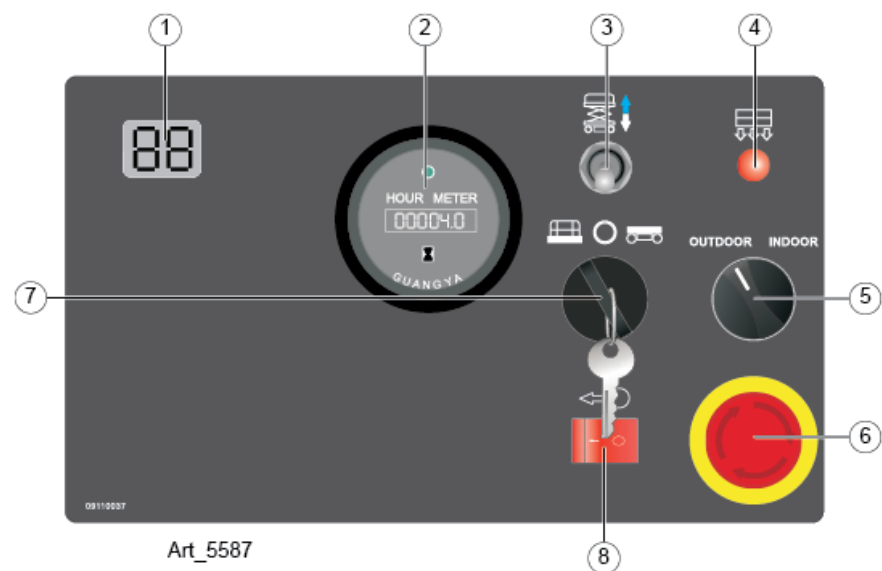
# Micro 19-XD Familiarization

(ANSI A92.22 6.2.5)

- 6.2.5.1 Prior to user's authorization of an operator to use a specific model of MEWP, the user must ensure the operator is familiarized on the following, and as specified by the manufacturer.
- Do not operate your MEWP until you have read and understood the Manufacturer's Operator Manual, have performed the workplace inspection, pre-start inspection, routine maintenance, and have completed all the test operations detailed in the operating instructions section of your manual.
- **Manual location is in manual enclosure on the inside of the front guardrail.**
- **Confirm that the required manual(s) as specified by the manufacturer are with the MEC Micro 19-XD.**

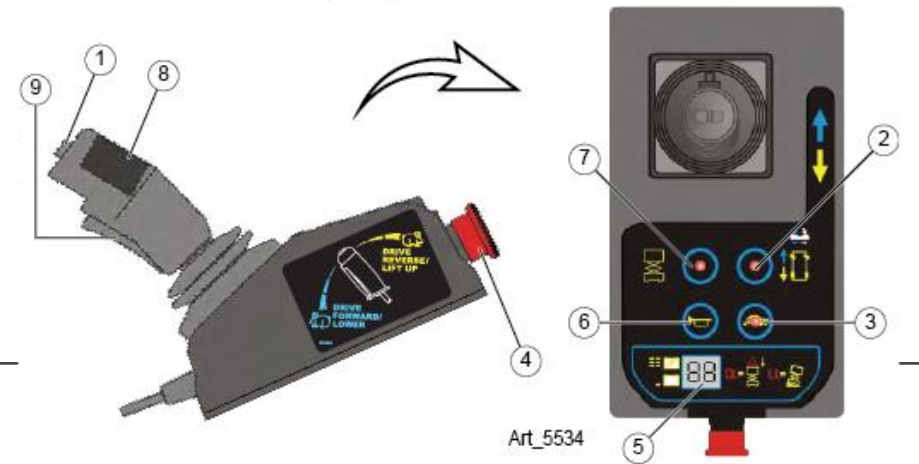


# Lower Controls



Control		Description	
1	LED	Display diagnostic codes when necessary.	
2	Hour Meter	The hour meter displays the number of hours the machine has operated.	
3	Platform Lift/Lower Switch	With the Key Switch in the BASE position, move this switch up to lift the platform or down to lower the platform.	
4	Indicator Light	ON indicates that machine system is powered up and functioning.	
5	Outdoor/Indoor Switch	Outdoors	Select to limit the maximum height when outdoors.
		Indoors	Select to allow unrestricted height when indoors.
6	Emergency Stop Switch	Press the EMERGENCY STOP switch at any time to stop all machine functions. Turn button clockwise too the ON position to operate the machine.	
7	Key Switch	Platform	Select to operate from the platform control panel
		Base	Select to operate from the base control panel.
		Off	Select to stop operation from either control panel.
8	Brake Release Switch	1. At the Ground Controls panel, push red rocker switch to the left & push down and hold the Lift/Lower switch to the lower position. 2. Pull or turn the Red Emergency Stop button clockwise to the ON position at the ground controls. An alarm will sound, signaling that the brakes have been released.	

# Platform Controls



Control	Description		
1	Thumb Rocker Switch	Press the thumb rocker switch in either direction to activate steer function.	
2	Drive Select	Press the button to select the drive function.	
3	Drive Speed Button	Press this button to activate the slow or fast drive function.	
4	Emergency Stop Switch	Press the EMERGENCY STOP switch at any time to stop all machine functions. Turn the button clockwise to the ON position to operate the machine.	
5	LED Display	Indicates the state of battery charge and displays diagnostic codes when necessary.	
6	Horn Button	Press to sound warning horn.	
7	Lift Select	Press this button to select the lift function.	
8	Proportional Control Handle	Drive	Proportionally controls Forward and Reverse travel.
		Lift	Proportionally controls Lift and Lower functions
9	Function Enable Switch	Function Enable Switch for LIFT & DRIVE & STEER functions.	





**Micro13-XD®**

**Micro19-XD®**

# Additional Emergency Controls, Features & Limitations



Emergency Battery Disconnect

Emergency Lowering

- **Max. Platform Height:** 18.4 ft.
- **Max. Platform Height Outdoor:** 13 ft.
- **Max. Platform Capacity:** 500 lbs., 1 person outdoor, 2 person indoor
- **Deck Extension Capacity:** 1 person/250 lbs.
- **Xtra-Deck® Capacity:** 1 Person/250 lbs.
- **Max. Chassis Inclination:** 1.5° side, 3° inline
- **Max. Wind Speed:** 28 mph (45 kph) outdoors
- **ELECTROCUTION HAZARD! THIS MACHINE IS NOT INSULATED!**
- See operator's manual for additional information and instructions for safe use.

# Operating Characteristics

## Features:

- Direct electric drive for longer duty cycle
- 24" rollout deck extension
- Charger and power to platform connect to single outlet on chassis
- Pull-down Xtra-Deck® gives additional 20in. height

## Options:

- 110v Inverter
- Tool Tray
- Proactive Platform Safety System® (PPSS) senses overhead obstructions
- Leak Containment System® (LCS)

\*See operator's manual for specific options and feature characteristics.

# For More Information

Contact your local Dealer, Rental Provider or MEC Aerial Work Platforms.

## MEC Aerial Work Platforms

- +1 (877) 632-5438
- +1 (559) 842-1500
- [info@MECawp.com](mailto:info@MECawp.com)

## MEC Parts

- +1 (559) 842-1523
- [parts@MECawp.com](mailto:parts@MECawp.com)

## MEC Product Support

- +1 (559) 842-1537
- [service@MECawp.com](mailto:service@MECawp.com)

## MEC Address & Website

- 1401 S Madera Ave,  
Kerman, Ca 93630
- [www.MECawp.com](http://www.MECawp.com)

*This information is provided as product familiarization as called for by ANSI A92.22. and CSA B 354. It is not intended to take the place of information provided by the MEC Operators manual or instruction provided by your equipment supplier. Further, all operators are to be trained before operating this equipment. Please contact MEC Aerial Work Platforms if you require additional information.*

