

MEWP Familiarization: MEC 1330SE

1330SE Familiarization

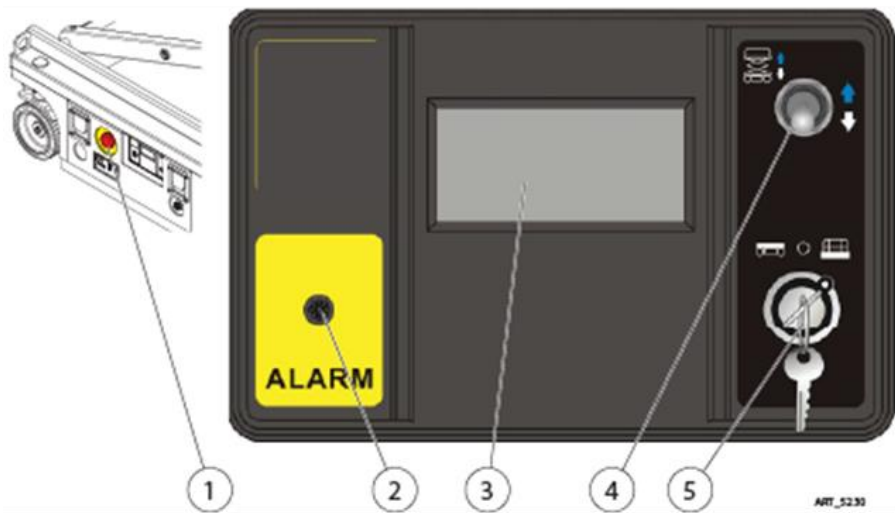
(ANSI A92.22 6.2.5)

- 6.2.5.1 Prior to user's authorization of an operator to use a specific model of MEWP, the user must ensure the operator is familiarized on the following, and as specified by the manufacturer.
- Do not operate your MEWP until you have read and understood the Manufacturer's Operator Manual, have performed the workplace inspection, pre-start inspection, routine maintenance, and have completed all the test operations detailed in the operating instructions section of your manual.
- **Manual location is in manual enclosure on the inside of the front guardrail.**
- **Confirm that the required manual(s) as specified by the manufacturer are with the MEC 1330SE.**



Lower Controls

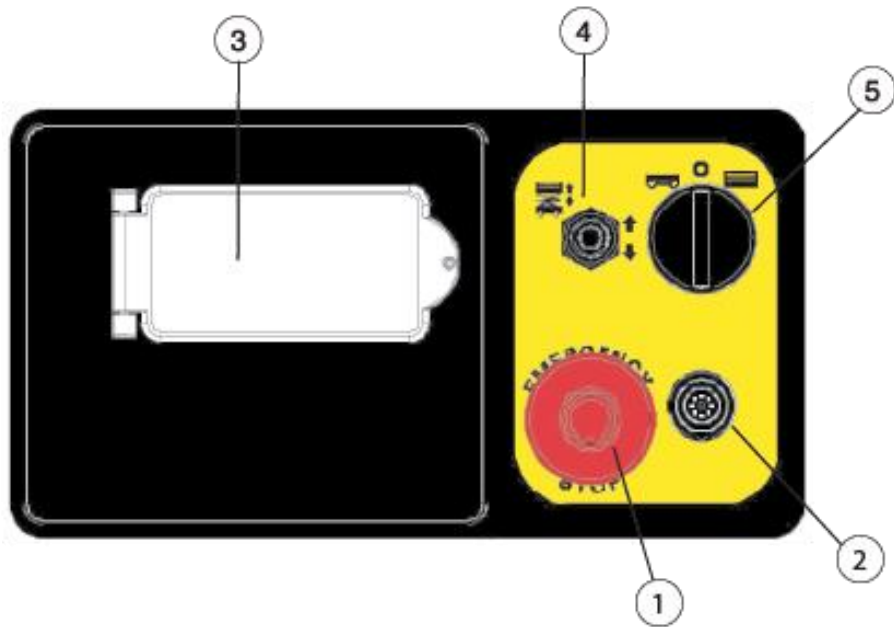
(Serial # 16300001 - 16301160)



Control		Description	
1	Emergency Stop Switch	Press the EMERGENCY STOP switch at any time to stop all machine functions. Pull switch to reset.	
2	Alarm	Sixty (60) tones/minute indicates platform descending. One hundred fifty (150) tones/minute indicates machine out of level.	
3	LCD Display	Indicates the state of battery charge and displays diagnostic codes when necessary.	
4	Platform Lift/Lower Switch	With the Key Switch in the BASE position, move this switch up to lift the platform or down to lower the platform.	
5	Key Switch	Platform	Select to operate from the platform control panel
		Base	Select to operate from the base control panel.
		Off	Select to stop operation from either control panel.

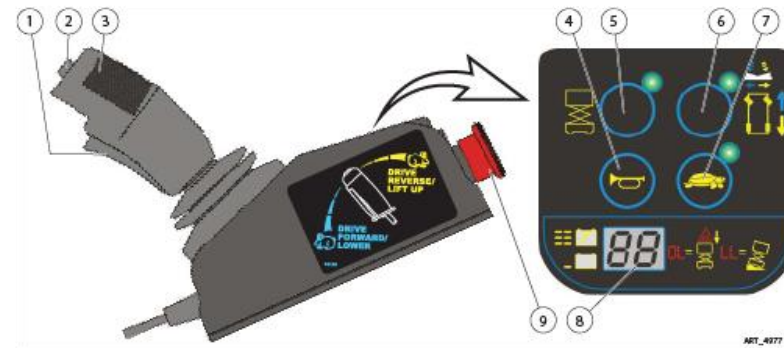
Lower Controls

(Serial # 16301161 - Current)



Control		Description
1	Emergency Stop Switch	Press the EMERGENCY STOP switch at any time to stop all machine functions. Pull switch to reset.
2	Alarm	Sixty (60) tones/minute indicates platform descending. One hundred fifty (150) tones/minute indicates machine out of level.
3	LCD Display	Indicates the state of battery charge and displays diagnostic codes when necessary.
4	Platform Lift/Lower Switch	With the Key Switch in the BASE position, move this switch up to lift the platform or down to lower the platform.
5	Key Switch	Platform Select to operate from the platform control panel
		Base Select to operate from the base control panel.
		Off Select to stop operation from either control panel.

Platform Controls



Control	Description
1	Function Enable Switch Squeeze to enable DRIVE, STEER, and LIFT functions from the Joystick.
2	Steer Switch Using your thumb, press and hold the rocker switch to steer Left or Right.
3	Control Handle Drive Proportionally controls Forward and Reverse travel.
	Lift Proportionally controls Lift and Lower functions.
4	Horn Button Press to sound warning horn.
5	Lift Select Press this button to enable the Lift function.
6	Drive Select Press this button to enable the Drive function.
7	Drive Speed Select Light ON indicates Low Speed Drive is selected. Light OFF indicates High Speed Drive is selected.
8	LED Display Indicates the state of battery charge and displays diagnostic codes when necessary.
9	Emergency Stop Switch Serial # 16300001 - 16301160 Press the EMERGENCY STOP switch at any time to stop all machine functions. Turn switch <i>clockwise</i> to reset.
	Serial # 16301161 – current Press the EMERGENCY STOP switch at any time to stop all machine functions. Pull switch to reset.

Additional Emergency Controls, Features & Limitations



Emergency Battery
Disconnect

Emergency
Lowering

- **Max. Platform Height:** 13 ft.
- **Max. Platform Capacity:** 530 lbs., 2 person
- **Deck Extension Capacity:** 250 lbs.
- **Max. Chassis Inclination:** 1.5° side, 3° inline
- **Max. Wind Speed:** 28 mph (45 kph) outdoors
- **ELECTROCUTION HAZARD! THIS MACHINE IS NOT INSULATED!**
- See operator's manual for additional information and instructions for safe use.

Operating Characteristics

Features:

- Direct electric drive for longer duty cycle
- 24” rollout deck extension
- Charger and power to platform connect to single outlet on chassis

Options:

- 110v Inverter
- Tool Tray
- Proactive Platform Safety System[®] (PPSS) senses overhead obstructions
- Leak Containment System[®] (LCS)

*See operator’s manual for specific options and feature characteristics.

For More Information

Contact your local Dealer, Rental Provider or MEC Aerial Work Platforms.

MEC Aerial Work Platforms

- +1 (877) 632-5438
- +1 (559) 842-1500
- info@MECawp.com

MEC Parts

- +1 (559) 842-1523
- parts@MECawp.com

MEC Product Support

- +1 (559) 842-1537
- service@MECawp.com

MEC Address & Website

- 1401 S Madera Ave,
Kerman, Ca 93630
- www.MECawp.com

This information is provided as product familiarization as called for by ANSI A92.22. and CSA B 354. It is not intended to take the place of information provided by the MEC Operators manual or instruction provided by your equipment supplier. Further, all operators are to be trained before operating this equipment. Please contact MEC Aerial Work Platforms if you require additional information.