

Hydraulic Schematic - 1930SE

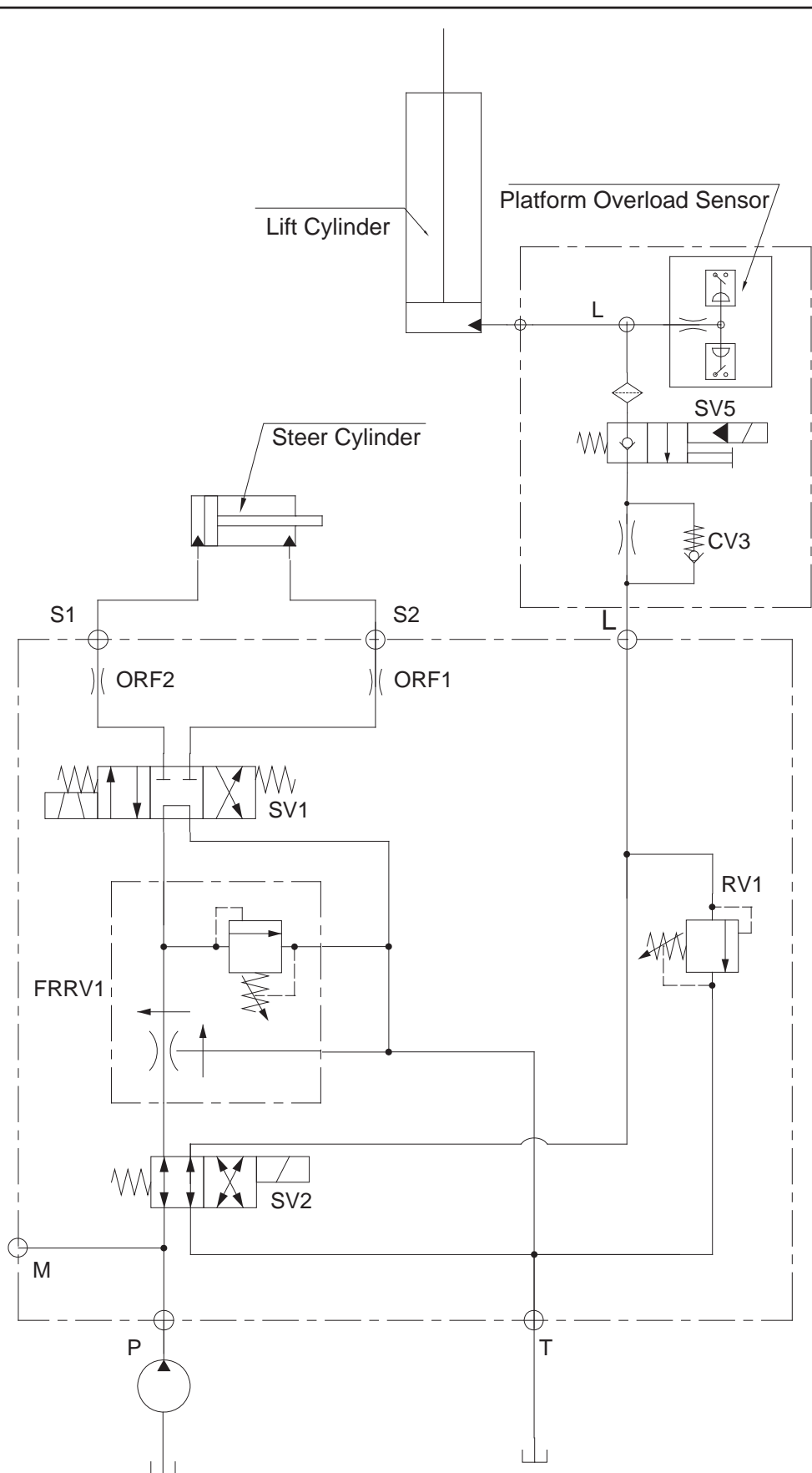



ILLUSTRATION No.
ART_5140

1930SE HYDRAULIC SCHEMATIC

Hydraulic Components - 1930SE

Functions Manifold

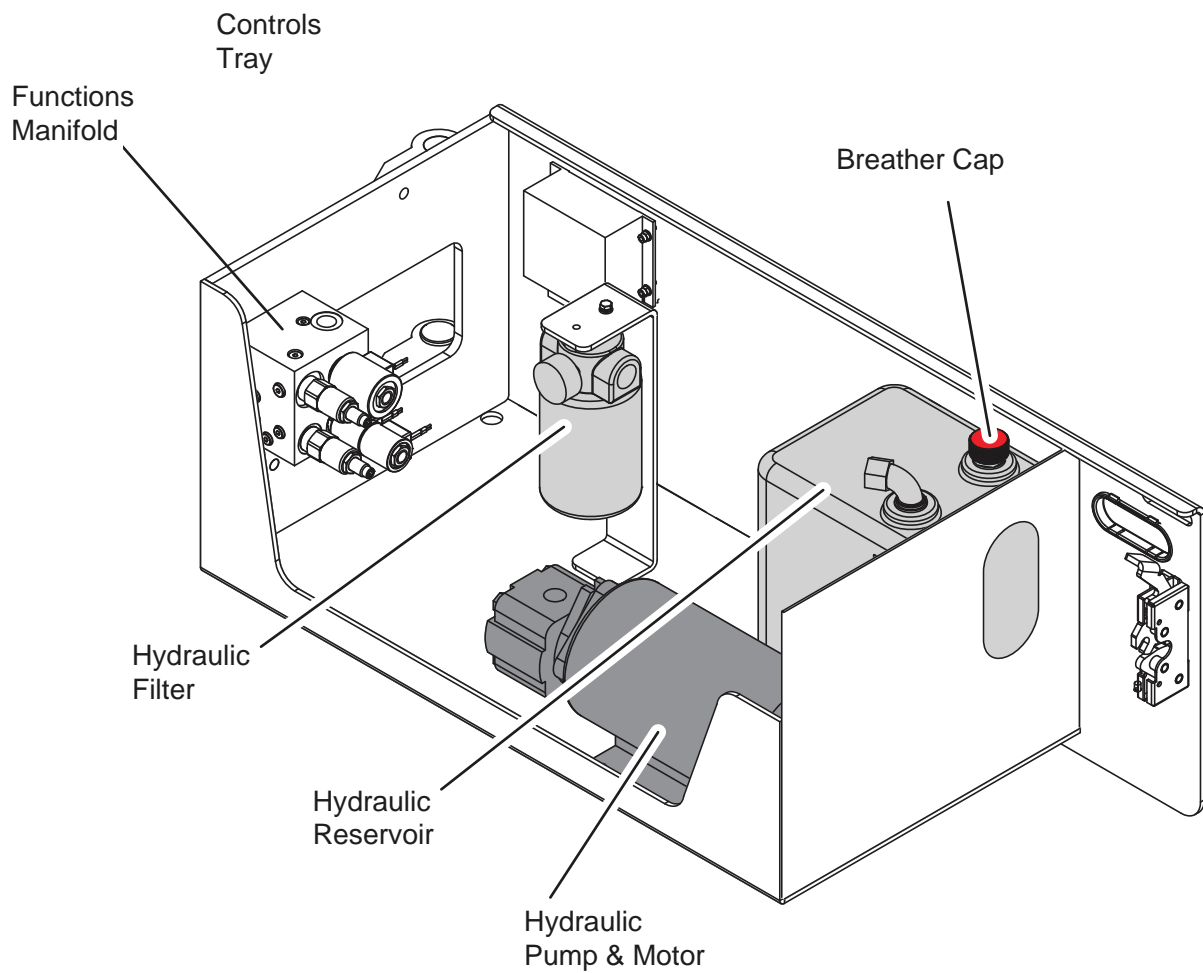
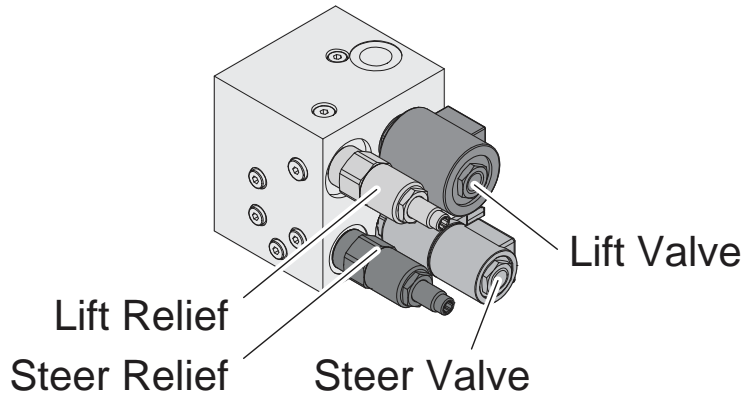
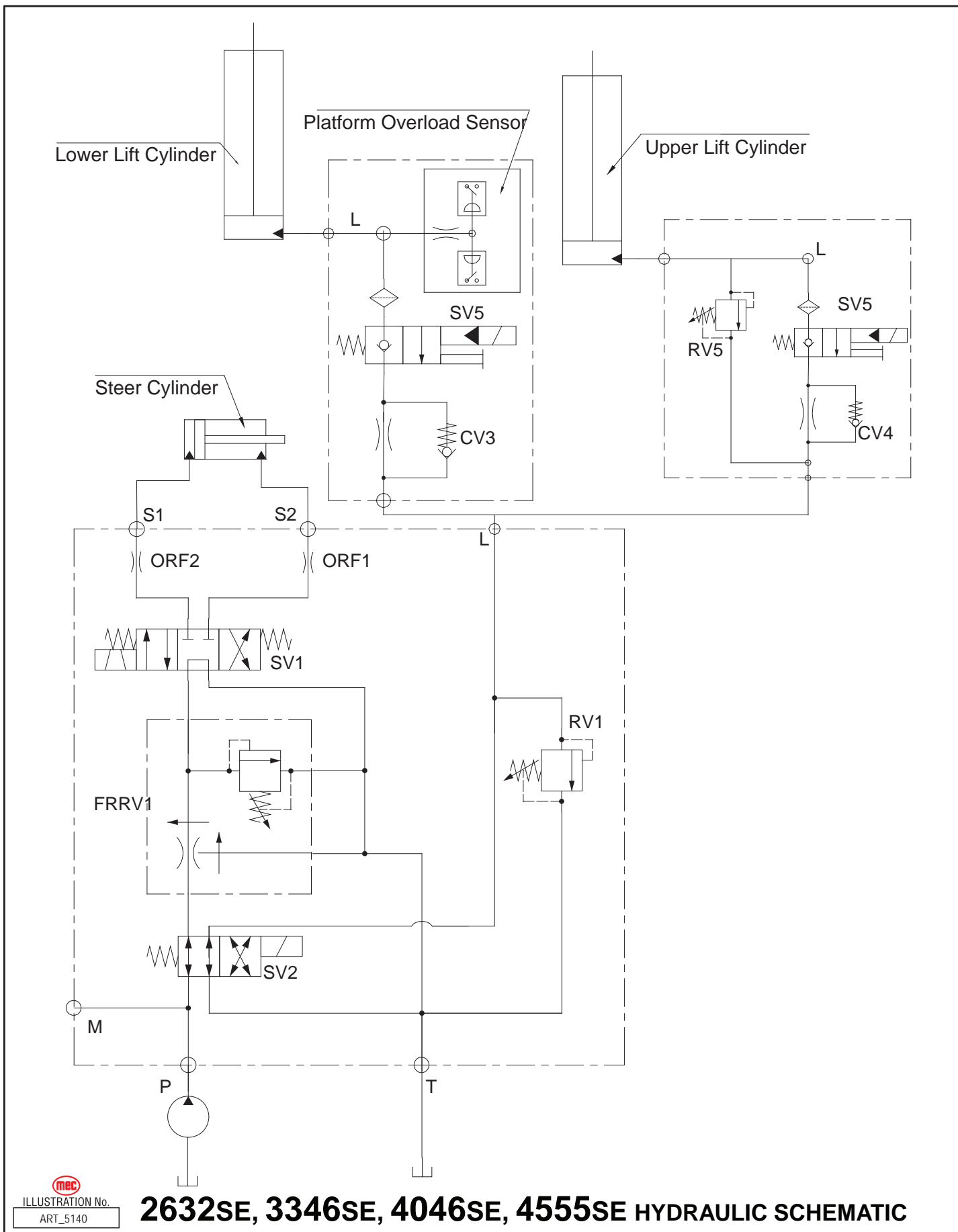



ILLUSTRATION No.
ART_5136

1930SE HYDRAULIC COMPONENTS

Hydraulic Schematic - 2632SE, 3346SE, 4046SE, 4555SE



Hydraulic Components - 2632SE, 3346SE, 4046SE, 4555SE

Functions Manifold

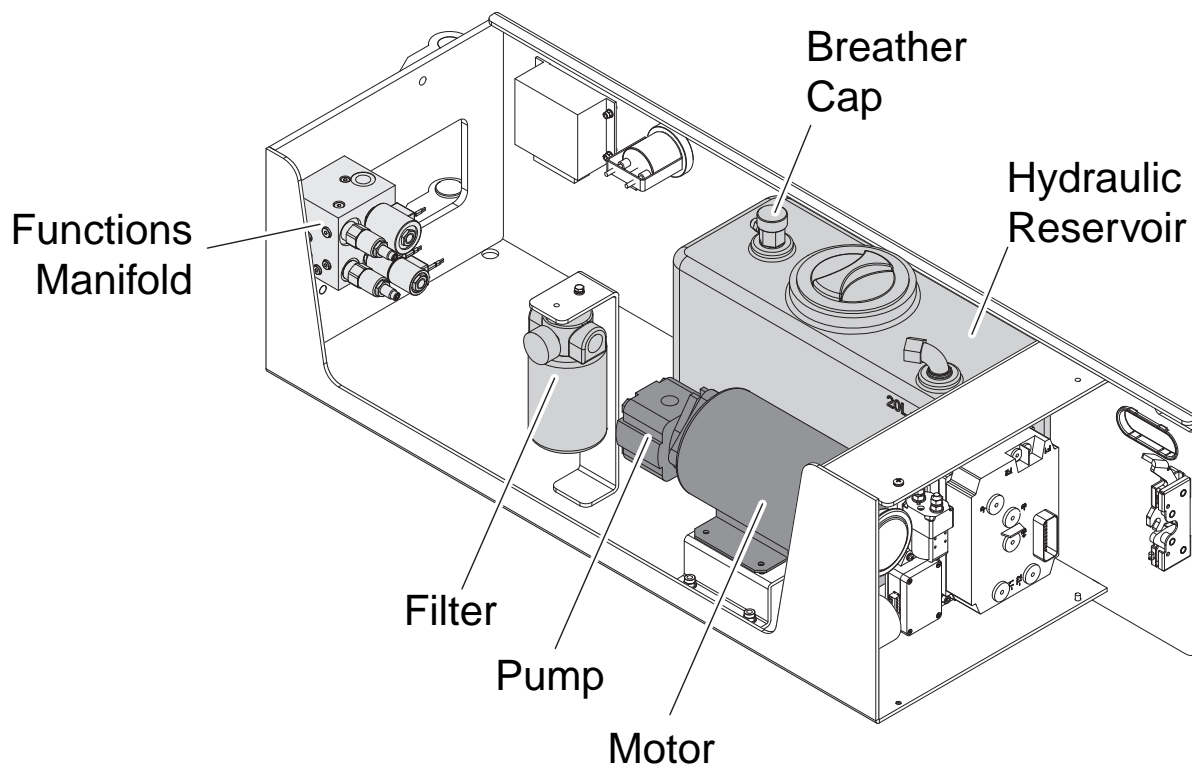
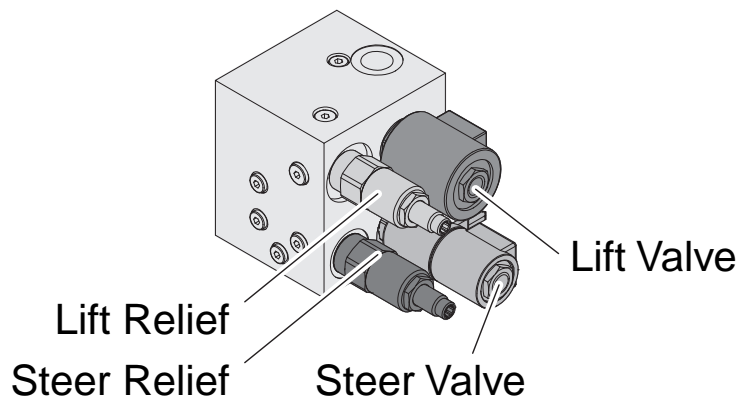


ILLUSTRATION No.
ART_5136

2632SE, 3346SE, 4046SE, 4555SE HYDRAULIC COMPONENTS



Function Valves

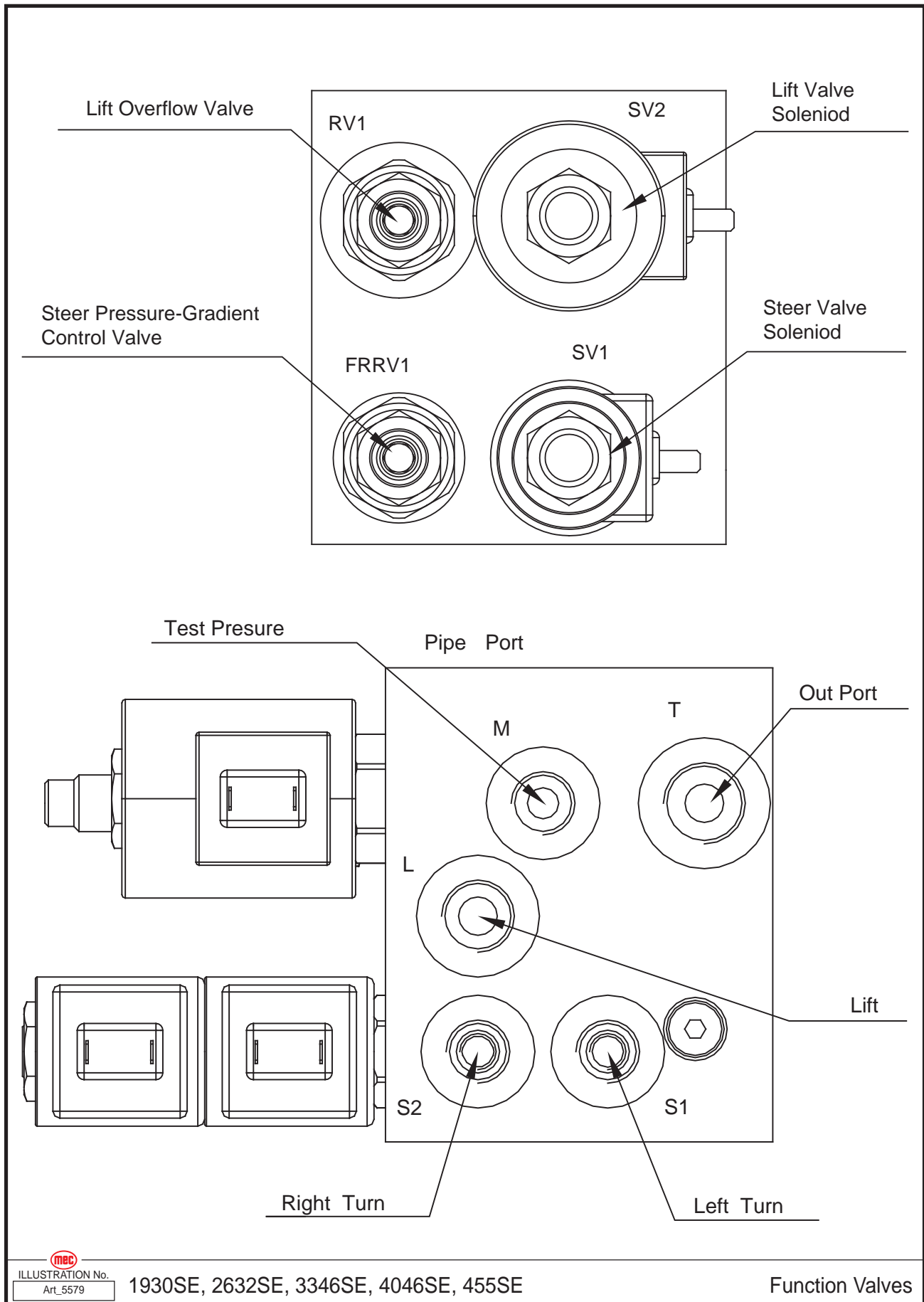
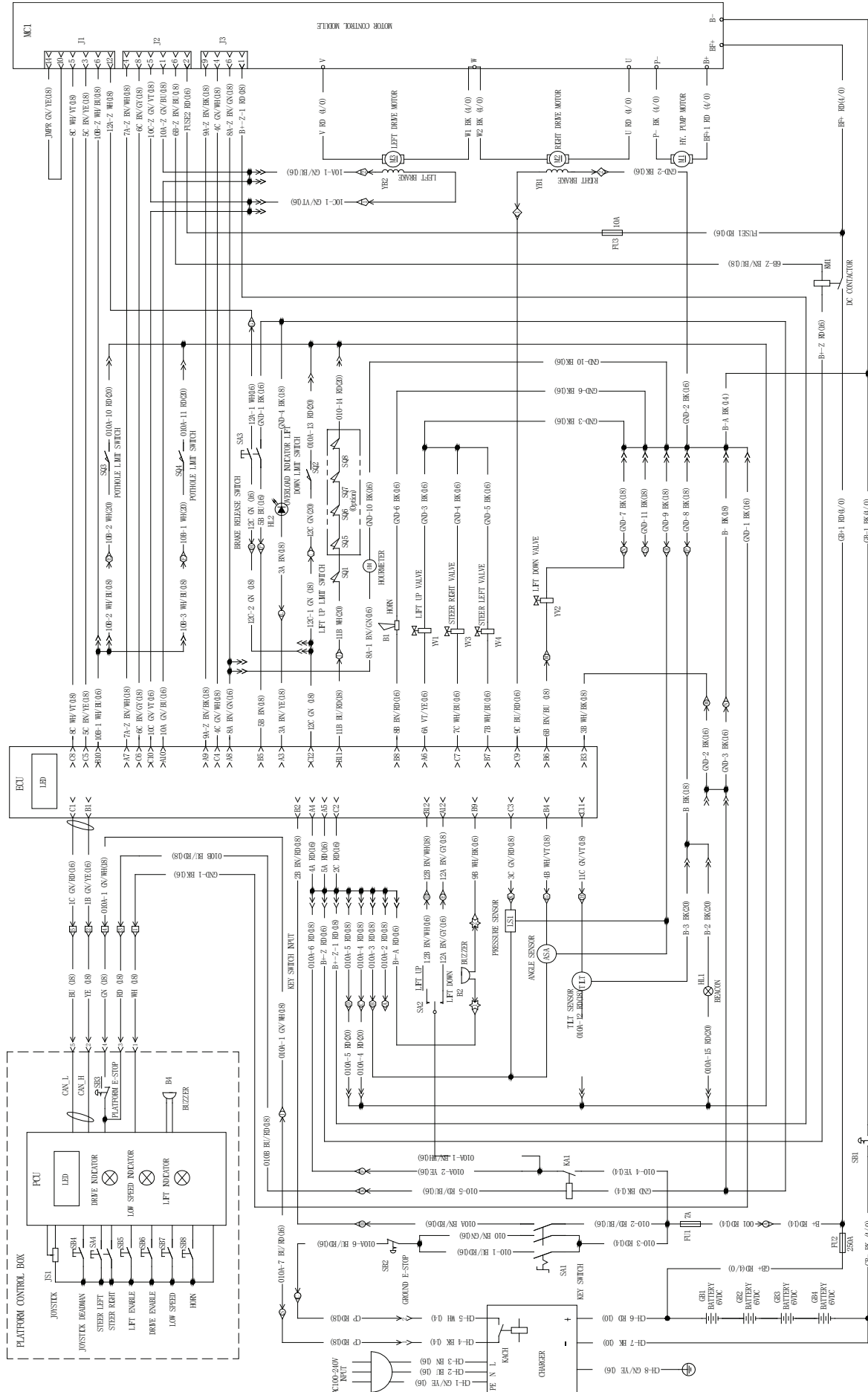


ILLUSTRATION No. 1930SE, 2632SE, 3346SE, 4046SE, 455SE
Art_5579

Function Valves

Electrical Schematic - 1930SE



1930SE ELECTRICAL SCHEMATIC

NOTE: ALL Wires ARE 18AWG OR 0.5mm² UNLESS NOTED OTHERWISE

- ◊-2 POSITION AMP CONNECTOR LOC8B = 2
- ◊-3 POSITION AMP CONNECTOR LOC8B = 2
- ◊-4 POSITION AMP CONNECTOR LOC8A
- ◊-5 POSITION AMP CONNECTOR LOC8C = 5
- ◊-6 POSITION AMP CONNECTOR LOC8D = 6



Wiring Diagram

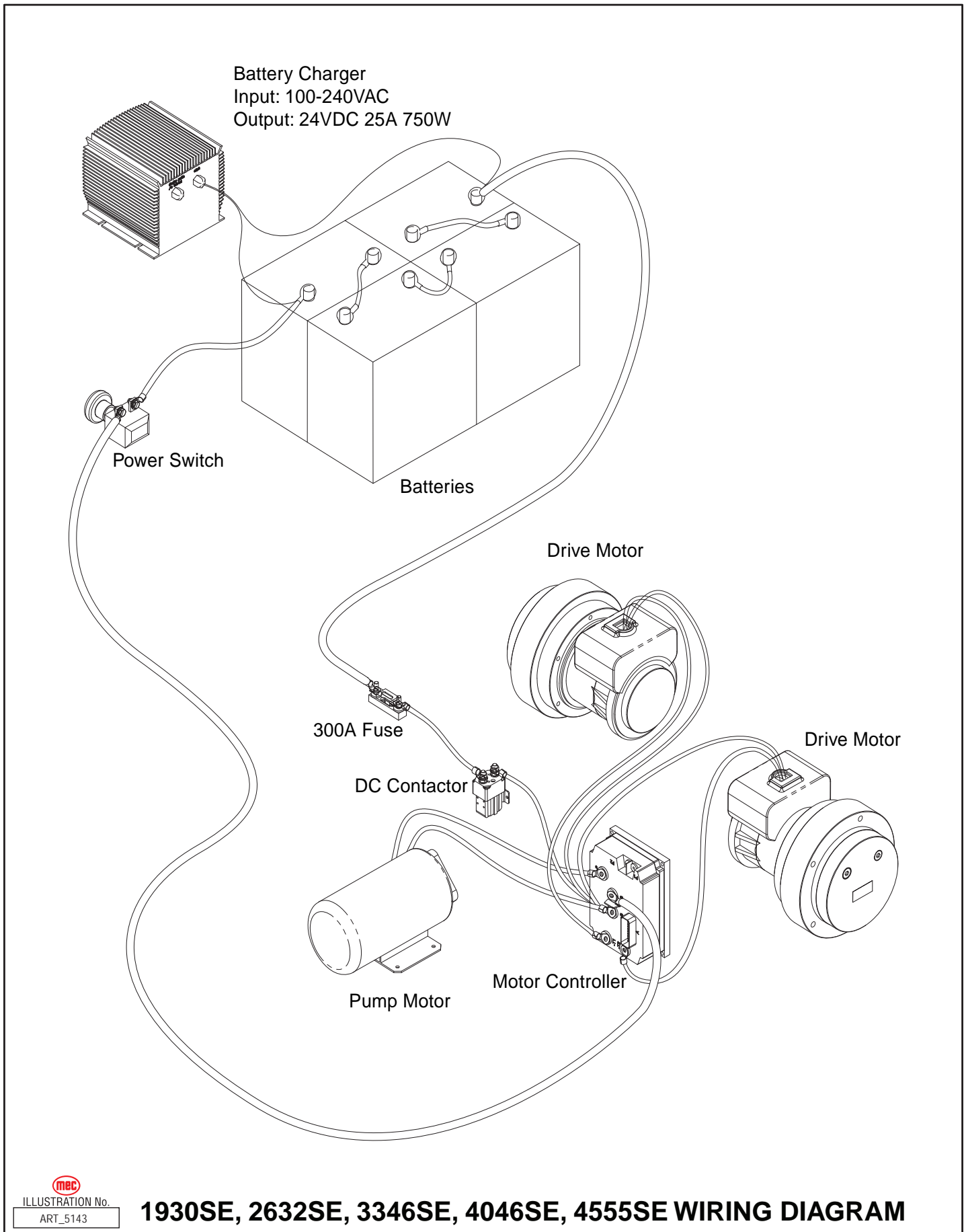


ILLUSTRATION No.
ART_5143

1930SE, 2632SE, 3346SE, 4046SE, 4555SE WIRING DIAGRAM

