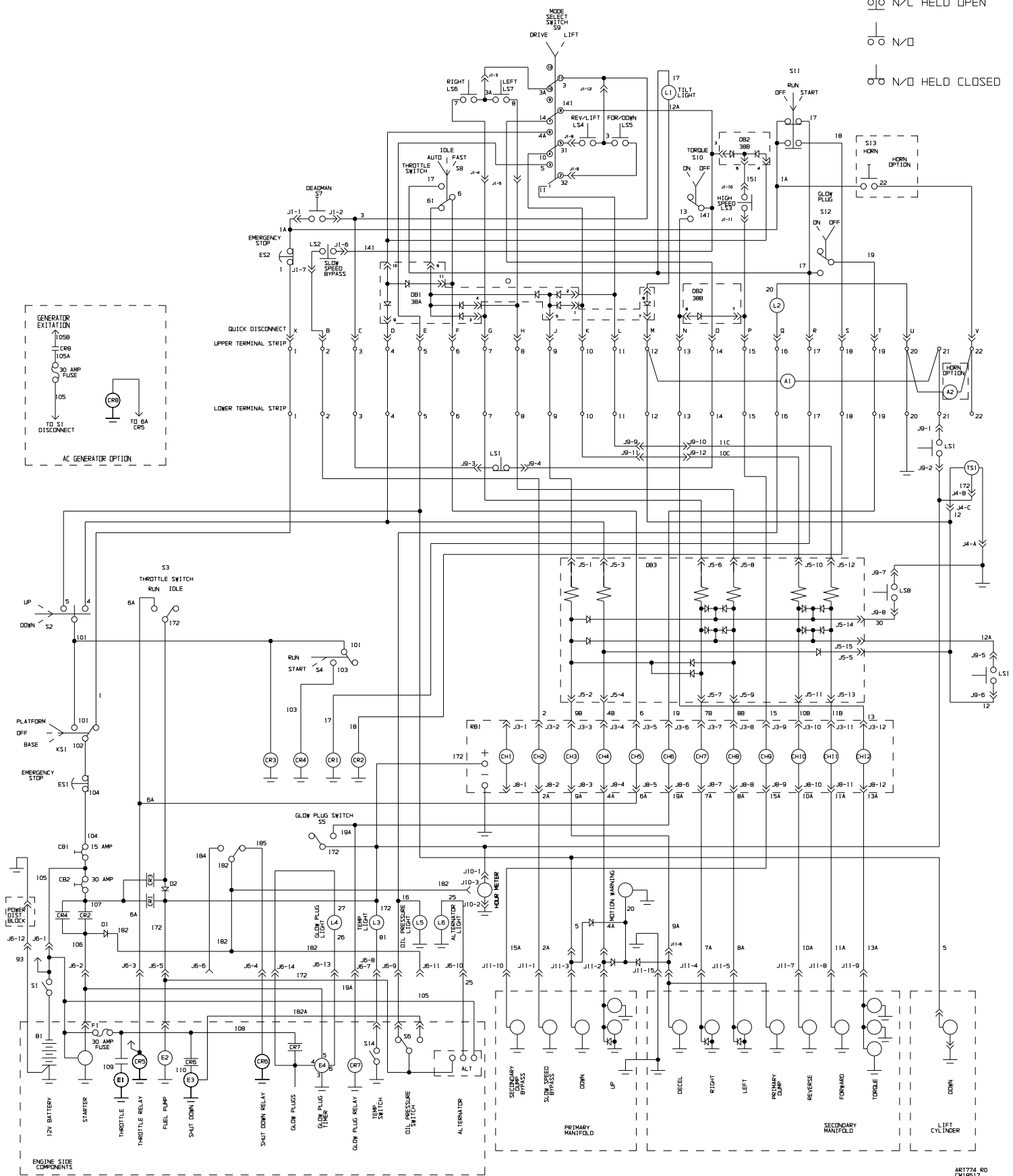


H
G
F
E
D
C
B
A

o/o N/C
o/o N/C HELD OPEN
o/o N/O
o/o N/O HELD CLOSED

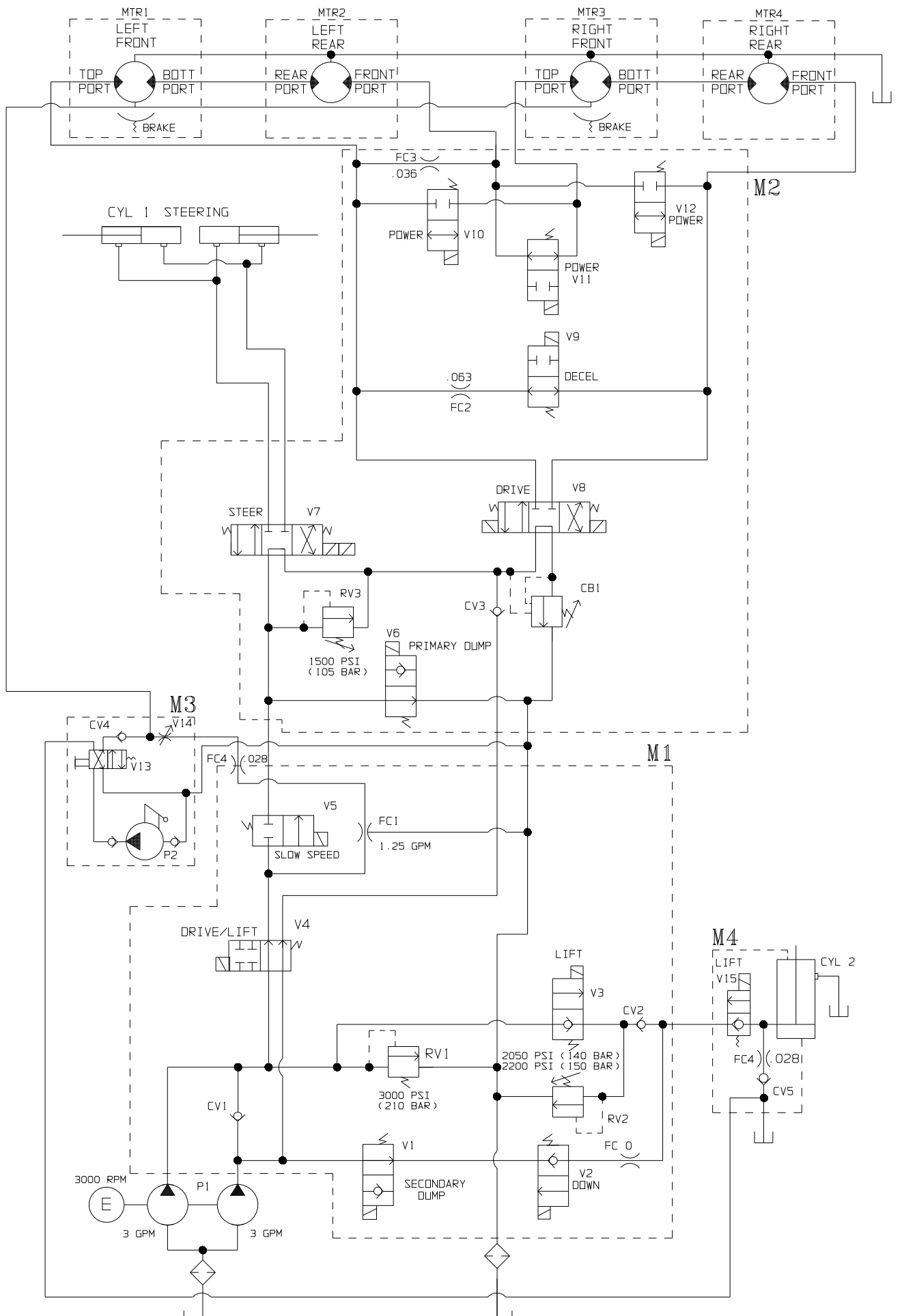


ITEM	PART NO.	QTY.	DESCRIPTION	FUNCTION	LOCATION
A1	7435	1	12V WARNING ALARM	TO WARN WHEN MACHINE HAS PASSED 4.5 DEG ABOVE 10 FEET	UNDER RIGHT SIDE OF PLATFORM
A2	14839	1	HORN OPTION PARTS	TO BEEP WHEN THE HORN SWITCH IS DEPRESSED	UNDER RIGHT SIDE OF PLATFORM
B1	6854	1	BATTERY, 12 VOLT STARTING	SUPPLY POWER	IN ENGINE CABINET ABOVE PUMP
CB1	7235	1	CIRCUIT BREAKER-15 AMP MANUAL	TO FUSE CONTROL CIRCUITRY	LOWER CONTROL PANEL
CB2	7447	1	CIRCUIT BREAKER 30 AMP MANUAL	TO FUSE STARTER AND BASE POWER	LOWER CONTROL PANEL
CR1	9278	1	POWER RELAY 12 VOLT DC 25 AMP	TO TURN ON POWER FROM PLATFORM	BACK RIGHT WALL INSIDE ELECTRICAL CABINET
CR2	9278	1	POWER RELAY 12 VOLT DC 25 AMP	TO ENERGIZE STARTER FROM PLATFORM	BACK RIGHT WALL INSIDE ELECTRICAL CABINET
CR3	9278	1	POWER RELAY 12 VOLT DC 25 AMP	TO TURN ON POWER FROM BASE	BACK RIGHT WALL INSIDE ELECTRICAL CABINET
CR4	9278	1	POWER RELAY 12 VOLT DC 25 AMP	TO ENERGIZE STARTER FROM BASE	BACK RIGHT WALL INSIDE ELECTRICAL CABINET
CR5	9278	1	POWER RELAY 12 VOLT DC 25 AMP	TO ENERGIZE THROTTLE SOLENOID TIMER	BACK LEFT WALL INSIDE ENGINE CABINET
CR6	9278	1	POWER RELAY 12 VOLT DC 25 AMP	TO ENERGIZE SHUT DOWN SOLENOID TIMER	BACK LEFT WALL INSIDE ENGINE CABINET
CR7	9278	1	POWER RELAY 12 VOLT DC 25 AMP	TO ENERGIZE GLOW PLUGS	BACK LEFT WALL INSIDE ENGINE CABINET
D1	6070	1	DIODE ASSEMBLY	ACTIVATE FUEL SHUTOFF SOLENOID DURING START	FROM POWER RELAY CR2 TO WIRE 1B3
D2	6070	1	DIODE ASSEMBLY	DISABLE BASE THROTTLE SWITCH WHILE IN PLATFORM	X
DB1	7451	1	CIRCUIT BOARD - CONTROL BOX	THROTTLE UP DURING DRIVE / LIFT / STEER FUCTIONS	INSIDE CONTROL BOX
DB2	7451	1	CIRCUIT BOARD - CONTROL BOX	TO ALLOW USE OF THE HIGH SPEED SWITCH	INSIDE CONTROL BOX
DB3	90328	1	CIRCUIT BOARD	PICK UP DRIVE / LIFT SIGNALS FOR TIP CUT-OUT	BACK RIGHT WALL INSIDE ELECTRICAL CABINET
E1	X	1	THROTTLE SOLENOID & TIMER	TO BRING ENGINE SPEED UP	RIGHT SIDE OF ENGINE
E2	X	1	FUEL PUMP	PUMP DIESEL FUEL FROM TANK TO ENGINE	OUTBOARD EDGE OF ENGINE CABINET
E3	X	1	SHUT DOWN SOLENOID & TIMER	OPENS AND CLOSES FUEL RACK	FRONT TOP OF ENGINE
E4	X	1	GLOW PLUG TIMER	ACTIVATE AND DEACTIVATE GLOW PLUG INDICATOR	BACK LEFT WALL INSIDE ENGINE CABINET
ES1	7800	1	SWITCH STOP, ASSEMBLY	STOP POWER TO BASE CONTROLS	LOWER CONTROL PANEL
ES2	7800	1	SWITCH STOP, ASSEMBLY	STOP POWER TO CONTROL BOX CONTROLS	INSIDE CONTROL BOX
F1		1	FUSE, 30AMP AGC	TO FUSE CHARGING CIRCUIT	RIGHT LOWER SIDE OF MOTOR
KS1	9549	1	SWITCH-KEY	TO SELECT BASE OR PLATFORM CONTROLS	LOWER CONTROL PANEL
L1	9188	1	LIGHT, BAYONET	TO WARN WHEN MACHINE HAS PASSED 4.5 DEG	INSIDE CONTROL BOX
L2	9188	1	LIGHT, BAYONET	TO INFORM OPERATOR OIL PRESSURE IS LOW	INSIDE CONTROL BOX
L3	6906	1	INDICATOR LIGHT	TO INFORM THAT ENGINE TEMP. IS TO HOT	LOWER CONTROL PANEL
L4	6906	1	INDICATOR LIGHT	TO INDICATE THAT GLOW PLUGS ARE ON	LOWER CONTROL PANEL
L5	6906	1	INDICATOR LIGHT	TO INFORM THAT OIL PRESSURE IS LOW	LOWER CONTROL PANEL
L6	6906	1	INDICATOR LIGHT	TO INFORM THAT ALTERNATOR IS NOT FUNCTION CORRECTLY	LOWER CONTROL PANEL
LS1	8932	1	SWITCH, LIMIT TWO POLE	ACTIVATE SLOW SPEED, AND TILT SENSOR CIRCUIT	REAR OF MACHINE AT BEAM BASE ATTACHMENT
LS2	8696	1	SWITCH, LIMIT MICRO - V7	ACTIVATE THE SLOW SPEED BYPASS VALVE	INSIDE CONTROL BOX
LS3	8696	1	SWITCH, LIMIT MICRO - V7	ACTIVATE THE SECONDARY DUMP BYPASS VALVE	INSIDE CONTROL BOX
LS4	8696	1	SWITCH, LIMIT MICRO - V7	ACTIVATE THE REVERSE OR LIFT VALVE	INSIDE CONTROL BOX
LS5	8696	1	SWITCH, LIMIT MICRO - V7	ACTIVATE THE FORWARD OR DOWN VALVE	INSIDE CONTROL BOX
LS6	8448	1	SWITCH V3 P-Q	ACTIVATE THE RIGHT VALVE	INSIDE CONTROL BOX
LS7	8448	1	SWITCH V3 P-Q	ACTIVATE THE LEFT VALVE	INSIDE CONTROL BOX
LS8	8776	1	SWITCH, LIMIT ONE POLE	DISABLE DRIVE AT PRESET HEIGHT	REAR OF MACHINE AT BEAM BASE ATTACHMENT
RB1	9021	1	RELAY BOARD 2, SOLID STATE	SUPPLY THE COILS WITH POWER AFTER RECIEIVING A FUCTION SIGNAL	BACK LEFT WALL OF ELECTRICAL CABINET
S1	8841	1	SWITCH, BATTERY DISCONNECT	TO LOCK OUT POWER TO MACHINE CONTROLS	REAR OF ENGINE COMPARTMENT
S2	5694	1	SWITCH, TOGGLE (3 POS. RTN TO CTR)	TO SELECT LIFT OR LOWER AT THE BASE CONTROLS	LOWER CONTROL PANEL
S3	5630	1	SWITCH, TOGGLE (2 POSITION)	ENERGIZES CR5, THROTTLE SOLENOID RELAY, WHEN IN BASE	LOWER CONTROL PANEL
S4	7423	1	SWITCH, TOGGLE (RETURN TO CTR)	ENERGIZES CR4, START RELAY, WHEN IN BASE	LOWER CONTROL PANEL
S5	7423	1	SWITCH, TOGGLE (RETURN TO CTR)	ENERGIZES CHOKE SOLENOID	LOWER CONTROL PANEL
S6	X	1	SWITCH, OIL PRESSURE	TO ACTIVATE WHEN OIL PRESSURE IS LOW	RIGHT SIDE OF MOTOR
S7	8753	1	SWITCH, DEADMAN	TO ALLOW OTHER CONTROLS TO BE USED AT THE PLATFORM CONTROLS	INSIDE HANDLE ASSEMBLY AT CONTROL BOX
S8	6905	1	SWITCH, TOGGLE (3 POSITION)	TO SELECT IDLE / RUN / OR AUTO AT THE PLATFORM CONTROLS	INSIDE CONTROL BOX
S9	8638	1	SWITCH, TOGGLE (4 POLE, DT)	TO SELECT LIFT OR DRIVE AT THE PLATFORM CONTROLS	INSIDE CONTROL BOX
S10	5630	1	SWITCH, TOGGLE (2 POSITION)	TO SELECT TORQUE AT THE PLATFORM CONTROLS	INSIDE CONTROL BOX
S11	9617	1	SWITCH, SELECTOR ANTI-RESTART	TO SELECT STOP, RUN, OR START AT THE PLATFORM CONTROLS	INSIDE CONTROL BOX
S12	7423	1	SWITCH, TOGGLE (RETURN TO CTR)	ENERGIZES CHOKE SOLENOID	INSIDE CONTROL BOX
S13	8044	1	SWITCH, HORN	TO ACTIVATE THE HORN AT THE PLATFORM CONTROLS	INSIDE CONTROL BOX
S14	X	1	SWITCH, TEMP.	TO ACTIVATE WHEN TEMP IS HOT	LEFT SIDE OF MOTOR
TS1	90160	1	12VOLT 4.0 DEG TILT SENSOR	ACTIVATE AT 4.0 DEG.	BACK LOWER RIGHT WALL OF ELEC. CABINET
					NEAR RADIATOR AT FRONT OF MOTOR CABINET

AR1774_R0
 CM18517
 4/3/00

WIRE HARNESS ASSEMBLIES AND CABLES

8859	COVER ASSEMBLY WIRE HARNESS
9210	CONTROL BOX ASSEMBLY WIRE HARNESS
9566	3072 MAIN WIRE HARNESS ASSEMBLY
9211	18 GA 25 COND. CABLE ASSEMBY
9158	UPPER CONTROL CORD CABLE ASSEMBLY
9214	DOWN CABLE ASSEMBLE
90517	DIESEL ENGINE HARNESS
9212	LIMIT SWITCH CABLE ASSY.
90201	MANIFOLD HARNESS
9304	HARNESS, MOTION ALARM

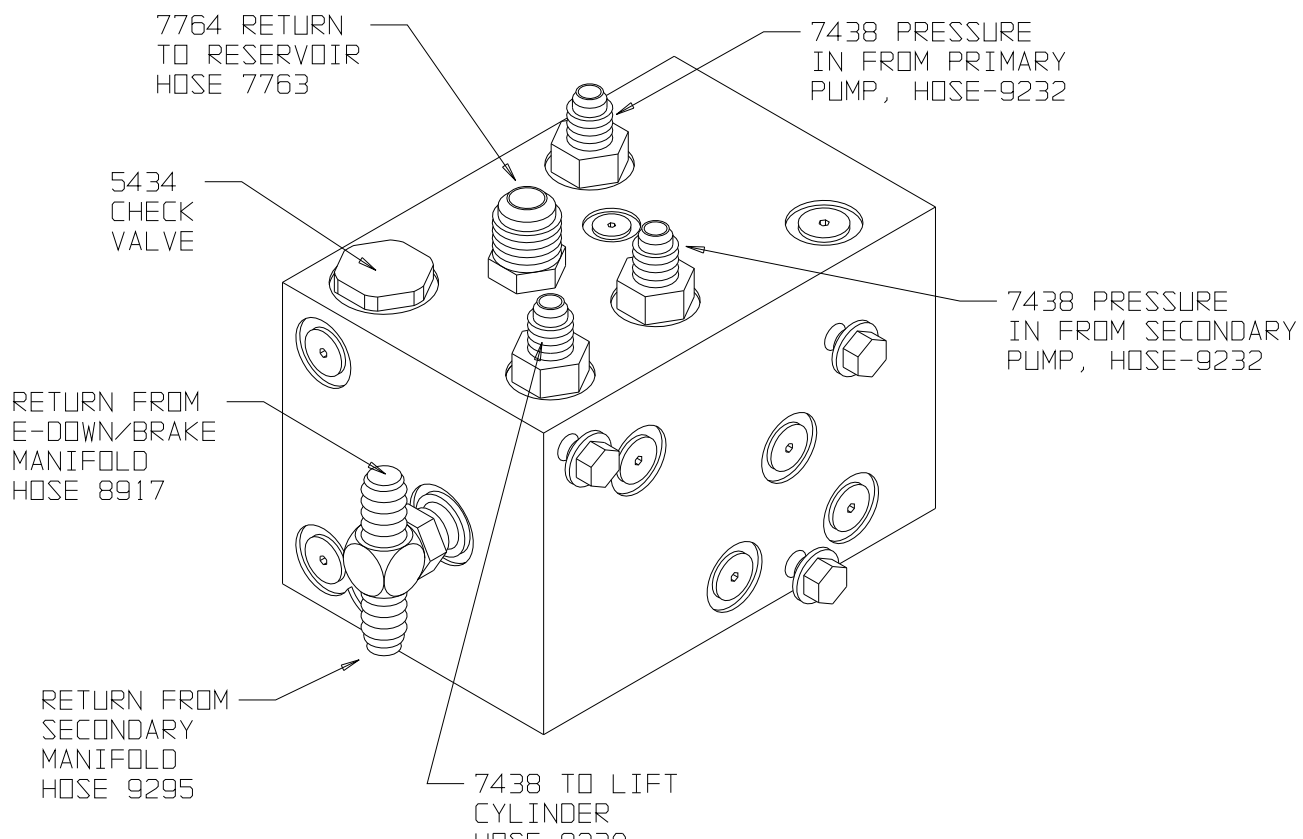
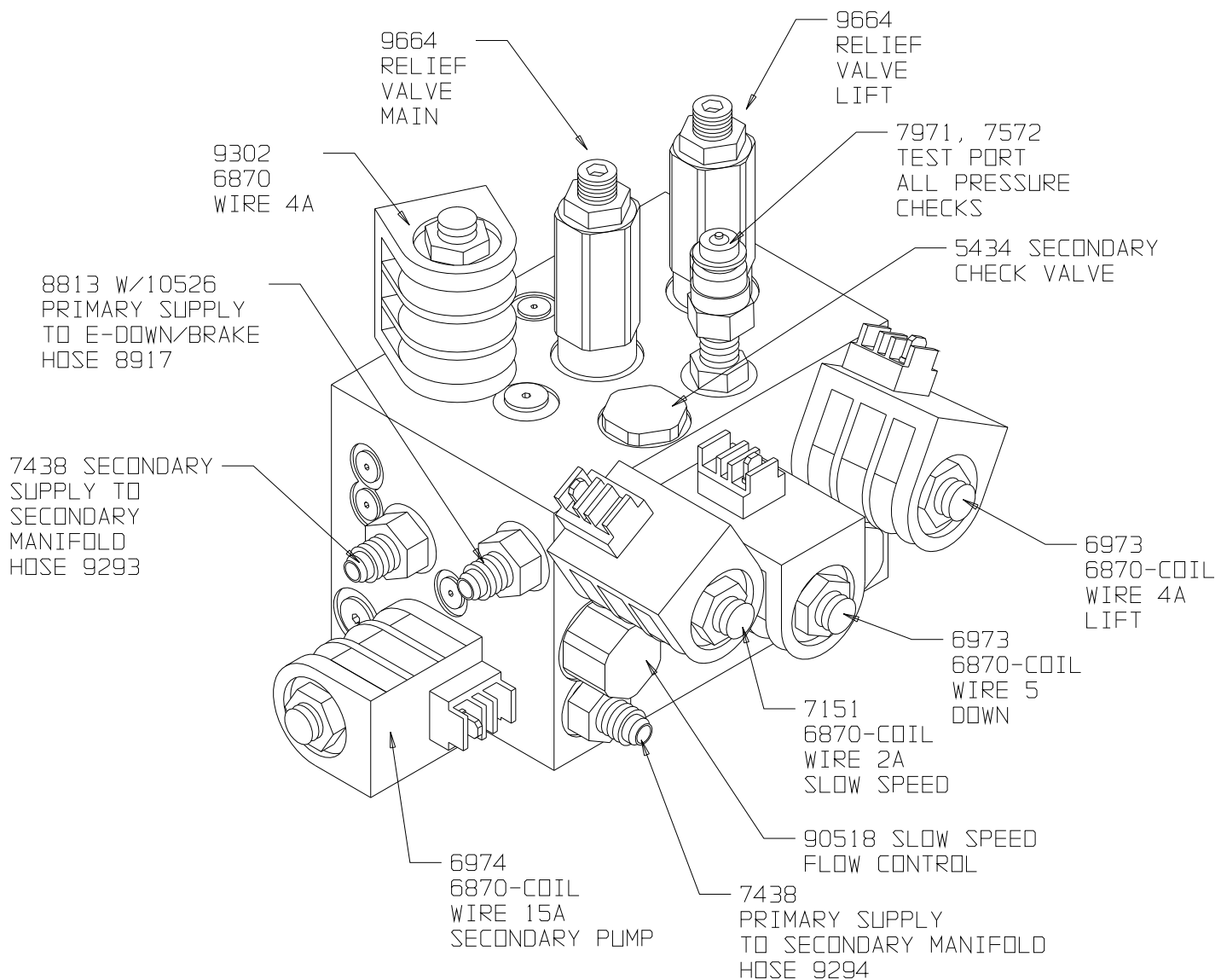


PRESSURE SETTINGS	
MAIN RELIEF	3000 PSI (210 BAR)
LIFT	2050 PSI (140 BAR)-800# / 2200 PSI (150 BAR)-1000#
STEERING	1500 PSI (105 BAR)

ART755 R4
 BM16522
 08/14/00

ITEM	PART #	DESCRIPTION
P1	6855	HYD. PUMP
MTR1	8843	HYD. WHEELMOTOR W/BRAKE
MTR2	7300P	HYD. WHEEL MOTOR
MTR3	8843	HYD. WHEELMOTOR W/BRAKE
MTR4	7300P	HYD. WHEEL MOTOR
CYL1	10329	STEERING CYLINDER ASSY
CYL2	8809	CYLINDER
M1	14958	PRIMARY MANIFOLD
CV1	5434	VALVE,CHECK-IN LINE
CV2	5434	VALVE,CHECK-IN LINE
FC0	10915	METERING PLUG
FC1	90518	VALVE, PRIORITY FLOW 1.25 GPM
RV1	9664	VALVE, PRESSURE RELIEF 3000 PSI (210 BAR)
RV2	9664	VALVE, PRESSURE RELIEF 2050 PSI - 800# CAP. (140 BAR)
		VALVE, PRESSURE RELIEF 2200 PSI - 1000# CAP. (150 BAR)
V1	6974	VALVE, N.O. POPPET 2 WAY
V2	6973	VALVE, N.C. POPPET 2 WAY
V3	6973	VALVE, N.C. POPPET 2 WAY
V4	9302	VALVE, 4 WAY, 2 POS
V5	7151	VALVE, N.C. SPOOL 2 WAY
M2	14957	SECONDARY MANIFOLD
CB1	9606	COUNTER BALANCE VALVE
CV3	5434	VALVE, CHECK-IN LINE
RV3	9664	VALVE, PRESSURE RELIEF 1500 PSI (105 BAR)
V6	6974	VALVE, N.O. POPPET 2 WAY
V7	9730	VALVE, 4 WAY, 3 POSITION
V8	9290	VALVE, DO1, 4 WAY, 3 POS
V9	6975	VALVE, N.O. SPOOL 2 WAY
V10	7151	VALVE, N.C. SPOOL 2 WAY
V11	6975	VALVE, N.O. SPOOL 2 WAY
V12	7151	VALVE, N.C. SPOOL 2 WAY
	6870	COIL, 12 VDC, 1 SPADE, 1/2" BORE
	9296	COIL, 12 VDC, 1 SPADE, 5/8" BORE
FC2	2975	ORIFICE, 1/8" NPTF, .067" DIA.
M3	14510	MANIFOLD, EMERGENCY DOWN
CV4	5434	VALVE, CHECK-IN LINE
V13	8848	VALVE, MANUAL PULL 4-WAY
V14	8855	VALVE, MANUAL ADJ FLOW CONTROL
P2	8849	VALVE, HYD. HAND PUMP
M4	14523	MANIFOLD LIFT CYLINDER
CV5	7445	VALVE, PILOT OPER. BALL CHECK
FC4	10526	DRILLED ORIFICE, NON SERVICEABLE
	HDW8813	FITTING, ORIFICE HOLDER
V15	6973	VALVE, N.C. POPPET 2 WAY
	6870	COIL, 12 VDC, 1 SPADE

PRIMARY MANIFOLD



SECONDARY MANIFOLD

