

LED Diagnostics Definitions

LED READING	DIAGNOSIS
LED on	Controller is operational
LED off	Internal fault
1 flash	<p>Personality/CRC fault</p> <p>This fault is usually an internal failure of the non-volatile memory. To clear this fault, check all adjustable personality settings and power-recycle. If fault persists or this failure is recurrent, replace logic card.</p>
2 flashes	<p>Procedure fault</p> <p>This includes drive, enable-bar, steer or lift function selected at power on; drive or lift or steer selected without enable-bar; enable-bar neutral 20 second time-out. Recycle through neutral to clear.</p>
3 flashes	<p>Motor permanently low</p> <p>This includes MOSFET short circuit. This fault shuts down all modes. Recycle through neutral to clear.</p>
4 flashes	<p>Motor permanently high</p> <p>This includes pump line contactor welded or open. This fault shuts down all modes. Platform/Base selector switch recycle to clear.</p>
5 flashes	<p>Power frame capacitor charge fault</p> <p>Check wiring. Replace powerpak.</p>
6 flashes	<p>Faulty accelerator</p> <p>This includes the accelerator greater than 15% at power on, and wire-off. If wire-off occurs during active function, motor speed will default to accelerator fault creep.</p>
7 flashes	<p>Battery voltage fault</p> <p>This includes battery voltage excessively high or low (set by special adjustable personalities) or BDI has reached cutout level. Neutral recycle to clear.</p>

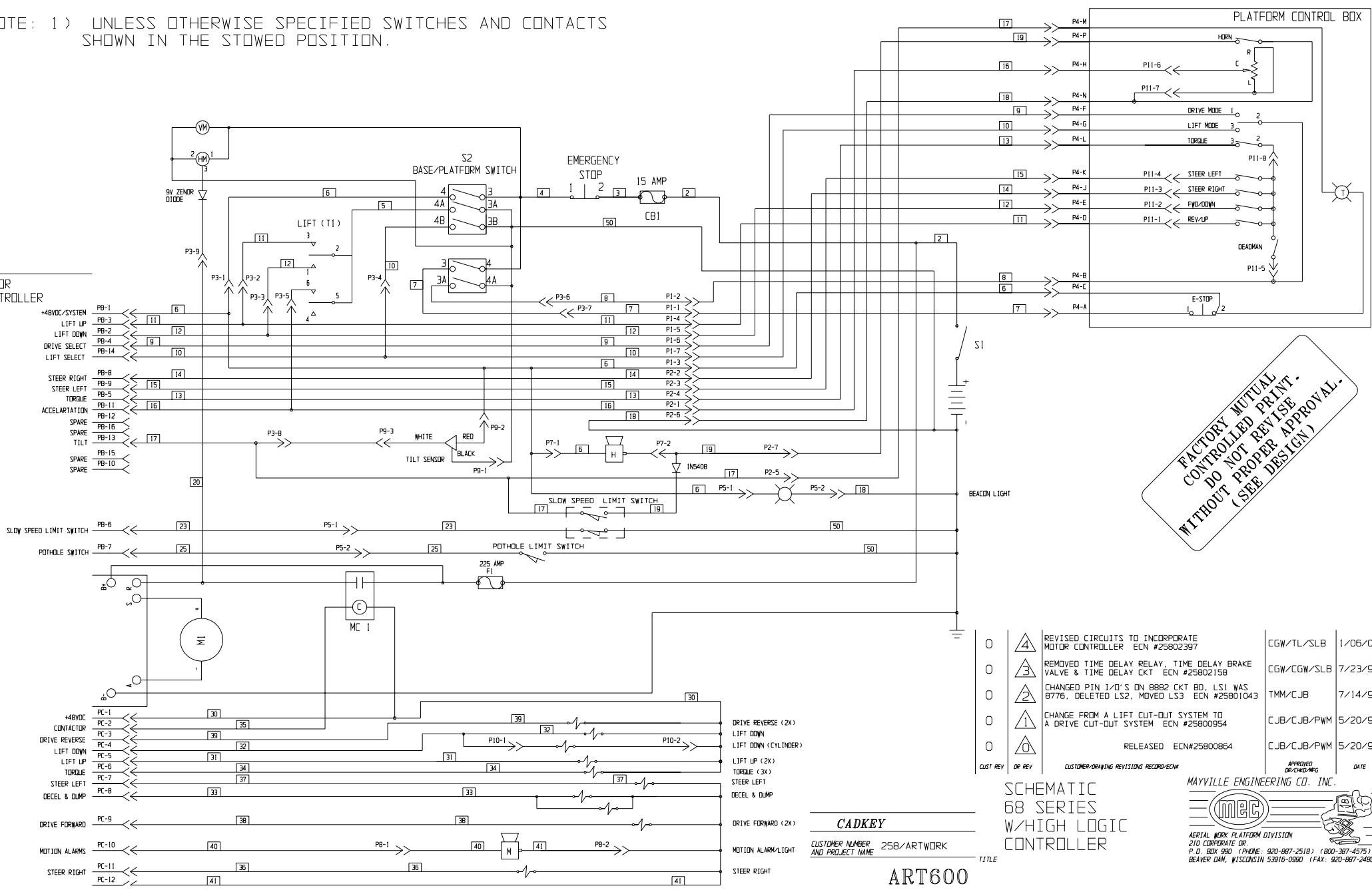


LED Diagnostics Definitions (Continued)

LED READING	DIAGNOSIS
8 flashes	Thermal cutback This includes MOSFET temperature above 75°C. Self-clearing.
9 flashes	Pump line contactor coil is shorted or mis-wired. Power recycle to clear.
10 flashes	Pothole deployment failed Lower scissors to clear
11 flashes	Tilt and scissor up shutdown In drive mode lower scissors to clear. Lift down will always be allowed.

NOTE: 1) UNLESS OTHERWISE SPECIFIED SWITCHES AND CONTACTS SHOWN IN THE STOWED POSITION.

MOTOR CONTROLLER



**FACTORY MUTUAL
 CONTROLLED PRINT.
 DO NOT REVISE.
 WITHOUT PROPER APPROVAL.
 (SEE DESIGN)**

0	4	REVISED CIRCUITS TO INCORPORATE MOTOR CONTROLLER ECN #25802397	CGW/TL/SLB	1/06/00
0	3	REMOVED TIME DELAY RELAY, TIME DELAY BRAKE VALVE & TIME DELAY CKT ECN #25802158	CGW/CGW/SLB	7/23/99
0	2	CHANGED PIN I/O'S ON 8892 CKT BD, LSI WAS 8776, DELETED LS2, MOVED LS3 ECN #25801043	TMM/CJB	7/14/97
0	1	CHANGE FROM A LIFT CUT-OUT SYSTEM TO A DRIVE CUT-OUT SYSTEM ECN #25800954	CJB/CJB/PWM	5/20/97
0	0	RELEASED ECN#25800864	CJB/CJB/PWM	5/20/97

SCHEMATIC 68 SERIES W/HIGH LOGIC CONTROLLER
 MAYVILLE ENGINEERING CO. INC.
 AERIAL WORK PLATFORM DIVISION
 210 CORPORATE DR.
 P.O. BOX 990 (PHONE: 920-887-2518) (800-387-4575)
 BEAVER DAM, WISCONSIN 53916-0990 (FAX: 920-887-2480)

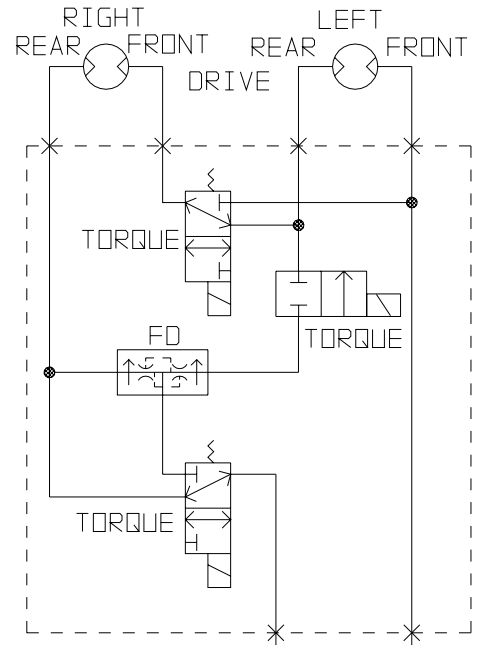
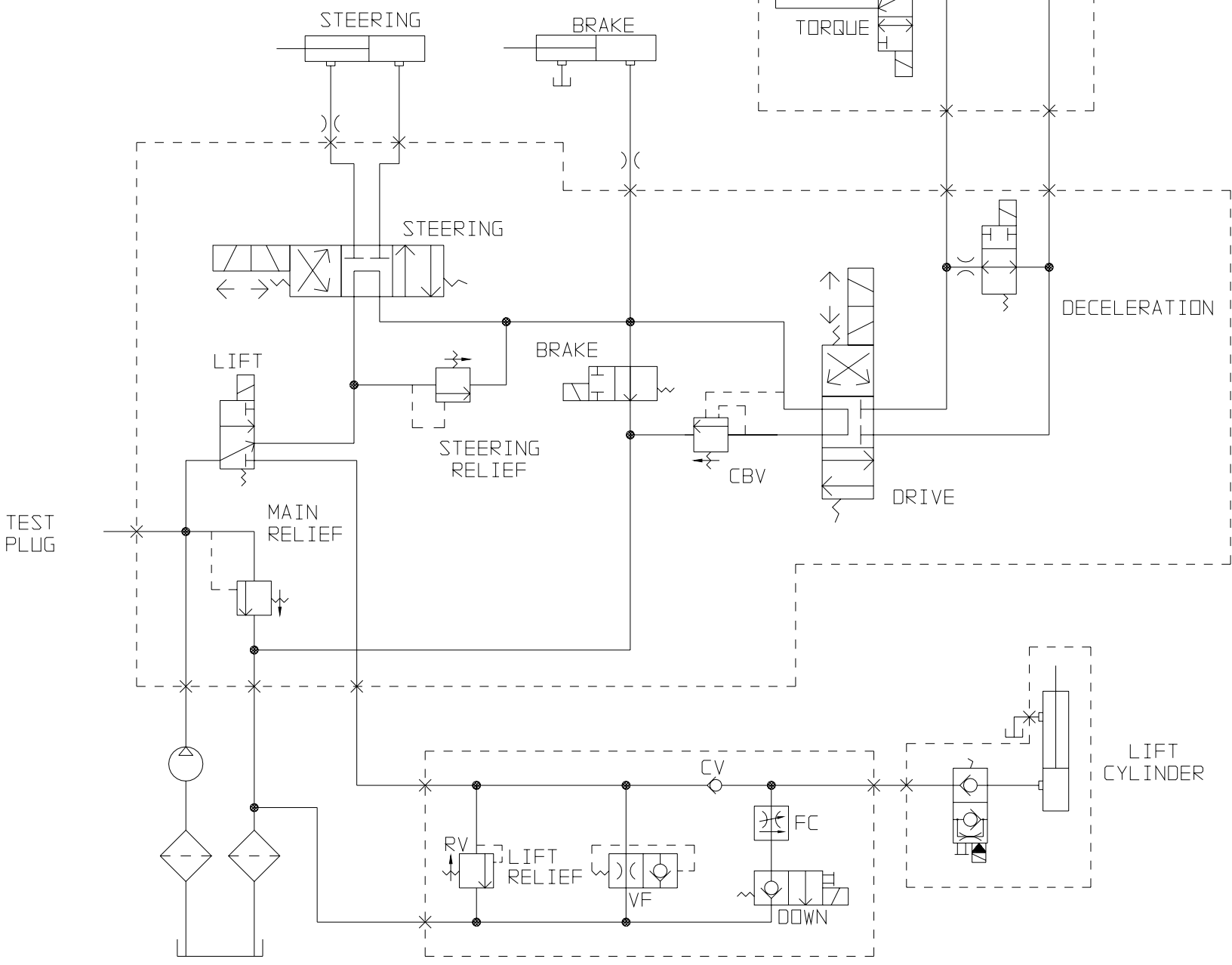
CADKEY
 CUSTOMER NUMBER 258/ARTWORK
 AND PROJECT NAME

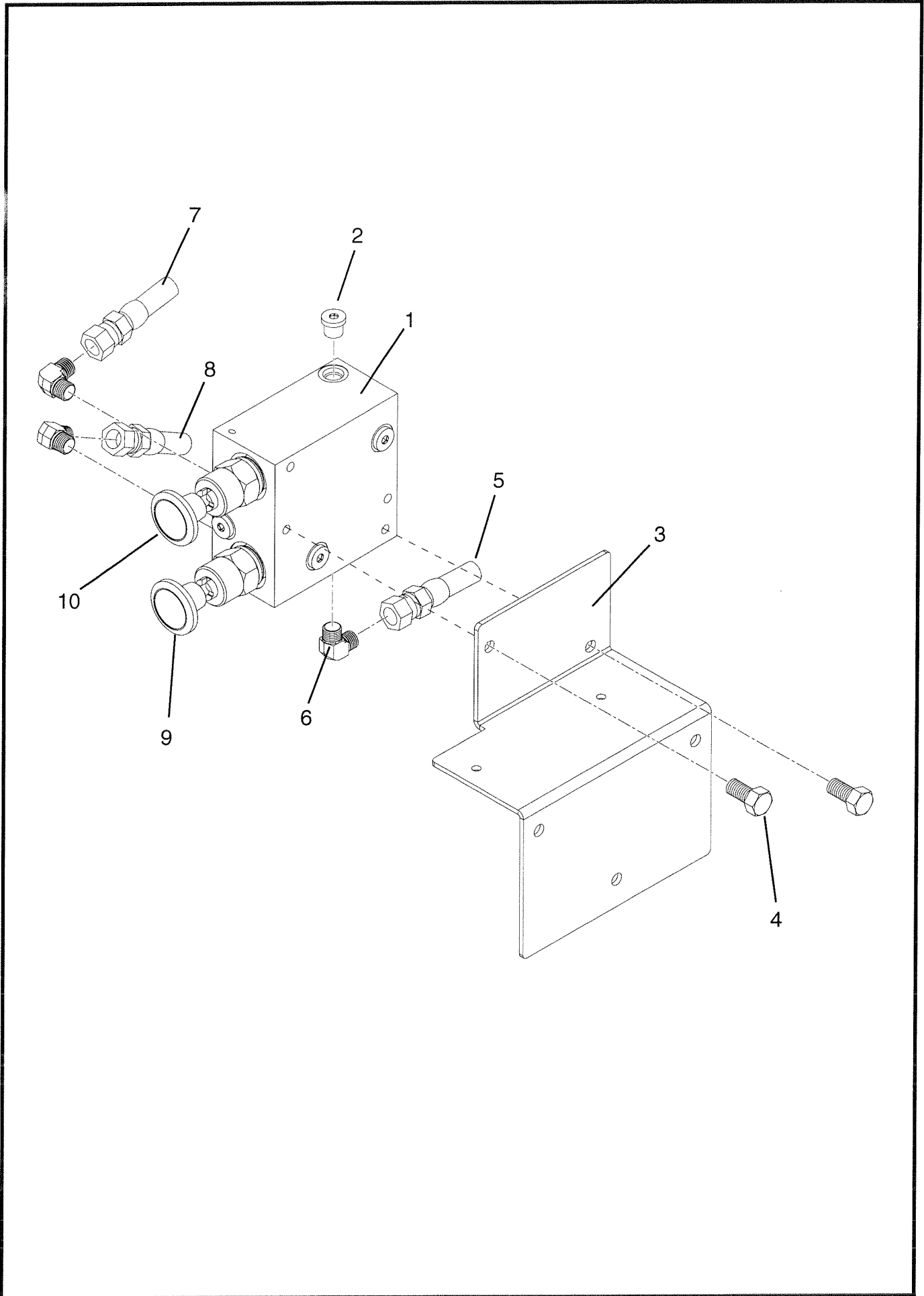
ART600

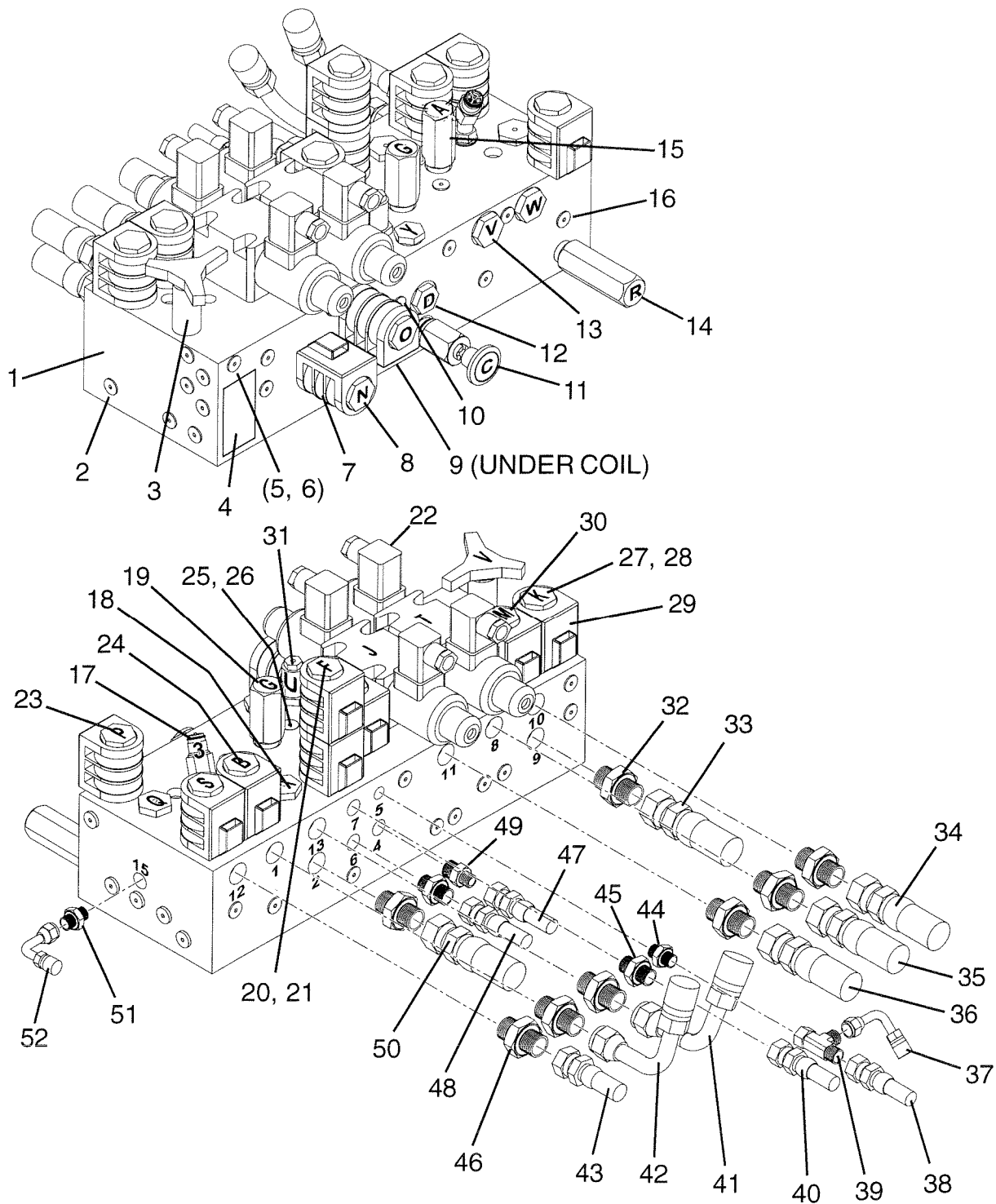
TITLE

APPROVED [Signature] DATE

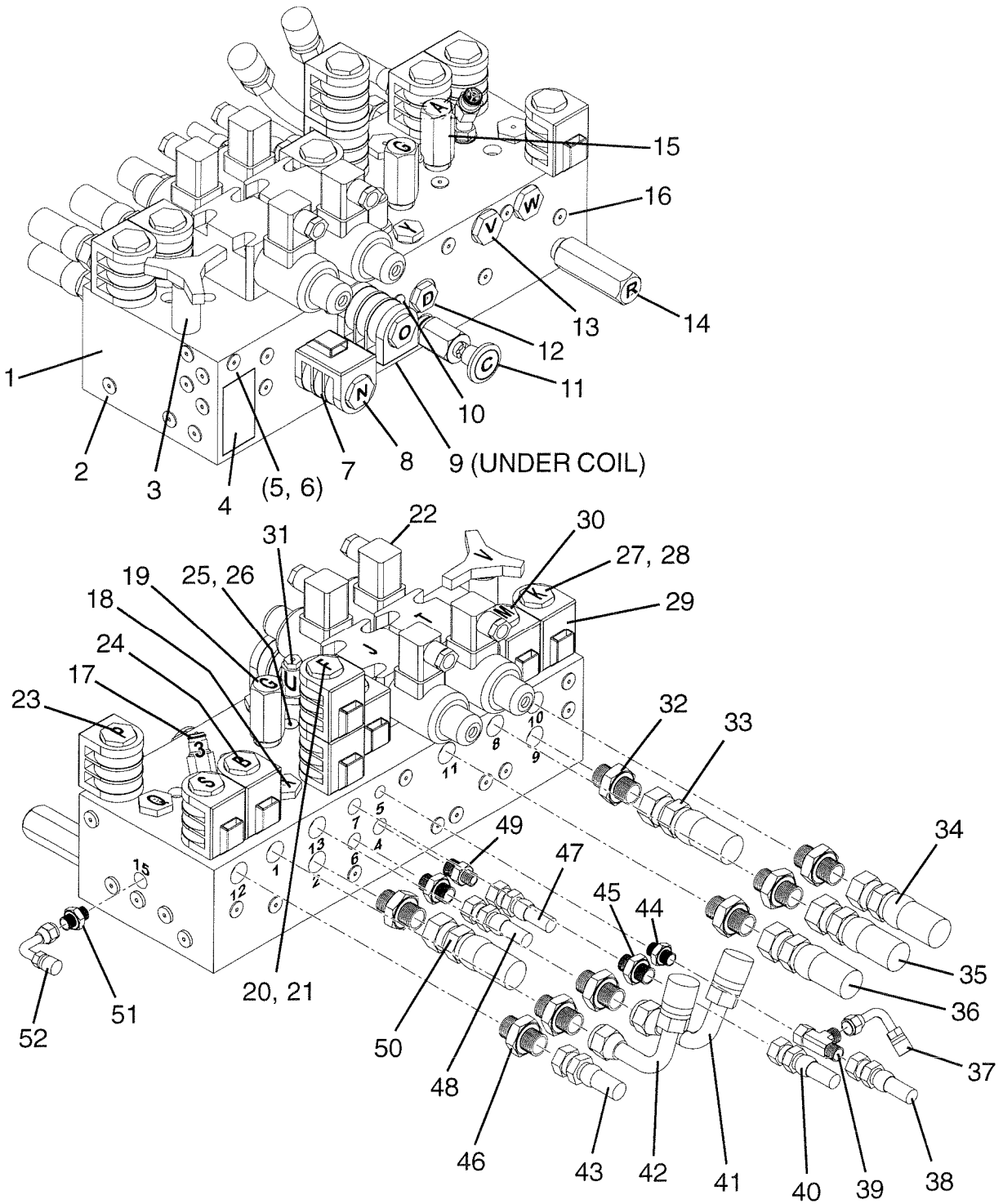
PRESSURE SETTINGS		1932	1532
MAIN RELIEF		2750 PSI	2750 PSI
LIFT		2350 PSI	1900 PSI
STEERING		850 PSI	850 PSI
COUNTERBALANCE		450 PSI	450 PSI
ORIFICE SIZES			
STEERING		.041 DIA.	
BRAKE		.067 DIA.	
DECELERATION		.041 DIA.	







ITEM	PART NO.	QTY	DESCRIPTION
	9964	-	MAIN MANIFOLD ASSEMBLY
1	90370	1	MANIFOLD
2	90382	21	PLUG, SAE #4, ZL
3	90378	1	VALVE, NEEDLE
4	90309	1	TAG, MANIFOLD
5	90395	1	PLUG, 1/16"-27 NPTF
6	HDW7314	2	PLUG, PIPE FITTING, MALE 43, O-RING
7	90375	7	COIL, 48 VDC, SERIES 7/8
8	6976	2	VALVE, 3 WAY 2 POSITION
9	90371	1	PLUG, EXPANDER, 8MM
10	90251	5	PLUG, EXPANDER, 7MM
11	9665	1	VALVE, MANUAL
12	9990	2	VALVE, CHECK
13	90382	21	PLUG, SAE #4, ZL
14	90426	1	VALVE, RELIEF, 2,200 PSI - 3068ES
15	90424	1	VALVE, RELIEF, 2,750 PSI - 3768ES
16	90383	18	PLUG, SAE #6, ZL
17	HDW7971	1	FITTING, MALE DISCONNECT 1/4NPT
	HDW7969	1	ELBOW, 45°, MALE 1/4", FEMALE 1/4"
	HDW9604	1	ADAPTER, MALE 3/8", MALE 1/4"
18	7765	1	PLUG, CAVITY 2 WAY
19	90427	1	VALVE, RELIEF, 800 PSI
20	9730	1	VALVE, TANDEM CNTR SCREEN, 4 WAY 7 POS
21	90381	2	COIL, 48 VDC, 4 WAY 3 POS
22	90374	2	VALVE, CNTRL
23	6973	2	VALVE, N.C. POPPET, 2 WAY
24	6975	2	VALVE, N.O. SPOOL
25	90384	1	PLUG, SAE #10
26	90379	1	ORIFICE PLUG, .025 DIA
27	9985	1	VALVE, N.O. SPOOL
28	90373	1	ORIFICE PLUG, DIA.062
29	90380	1	COIL, 48 VDC, SERIES 3/4
30	90372	1	VALVE, N.O. POPPET
31	9606	2	VALVE, COUNTER BALANCE
32	HDW7390	7	UNION, MALE 1/2", MALE 1/2", O-RING



ITEM	PART NO.	QTY	DESCRIPTION
		-	MAIN MANIFOLD ASSY (CONTINUED)
33	90307	1	HOSE ASSEMBLY 1/2" X 51" LG
34	9745	1	HOSE ASSEMBLY 1/2"X 69" LG
35	90308	1	HOSE ASSEMBLY 1/2" X 49" LG
36	9748	1	HOSE ASSEMBLY 1/2"X 72" LG
37	90313	1	HOSE ASSEMBLY 1/4"X 64" LG
38	90312	1	HOSE ASSEMBLY 1/4" X 52" LG
39	90332	1	TEE, MALE 1/4", FEMALE 1/4"
40	90306	1	HOSE ASSEMBLY 1/4" X 76" LG
41	90315	1	HOSE ASSEMBLY 1/2" X 21" LG
42	90330	1	HOSE ASSEMBLY 1/2" X 23" LG
43	90316	1	HOSE ASSEMBLY 1/4" X 21" LG
44	HDW8881	1	ADAPTER, MALE 1/4", MALE 1/4", O-RING
45	HDW7438	2	ADAPTER, MALE 3/8", MALE 3/8"
46	HDW7389	1	ADAPTER, MALE 3/8", MALE 1/2"
47	90316	1	HOSE ASSEMBLY 1/4" X 21" LG
48	8897	1	HOSE ASSEMBLY 1/4"X 66" LG
49	HDW9472	1	UNION, MALE 1/4", MALE 3/8", O-RING
50	9849	1	HOSE ASSEMBLY 1/2"X 44" LG
51	HDW9472	1	UNION, MALE 1/4", MALE 3/8", O-RING
52	90317	1	HOSE ASSEMBLY 1/4" X 18" LG
		6	PLUG, PLASTIC, SAE #6
		8	PLUG, PLASTIC, SAE #8
		1	PLUG, PLASTIC, SAE #4