

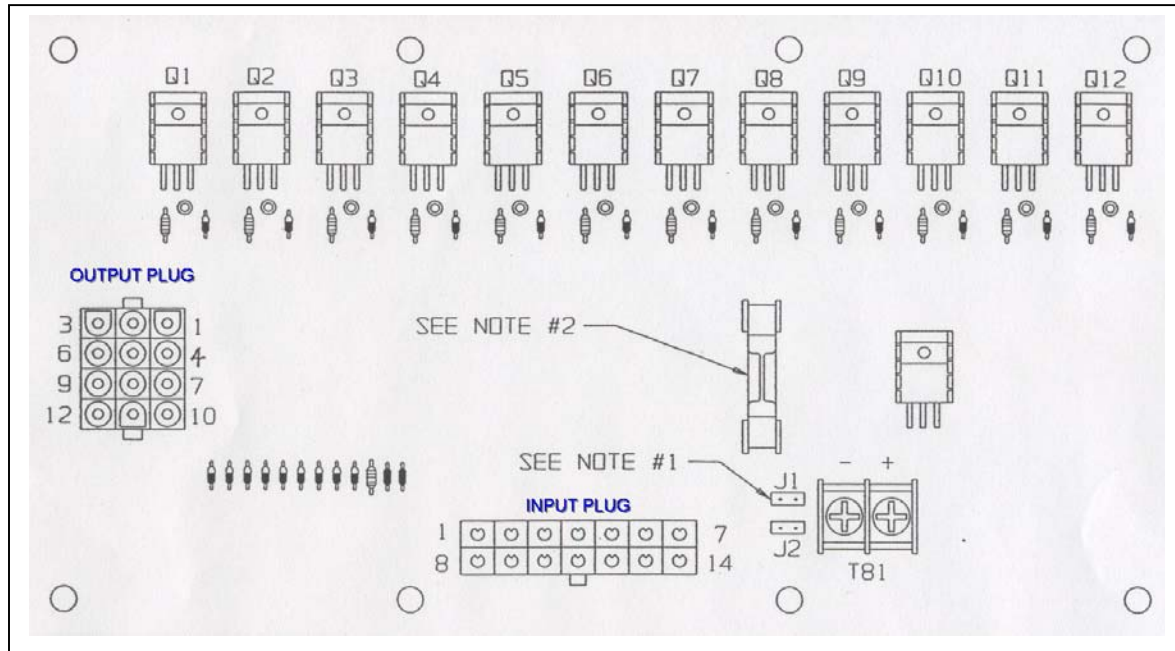


Aerial Work Platforms

9021 Relay Board (new style)

When replacing (p/n 9021) circuit board on **Quadrex 25/33 RT** series or **3072** series or **2558DF** (Kawasaki eng), it will be necessary to pull jumper J1 (note 1 on diagram). Jumper J1 programs the throttle and choke control circuits. Leave jumper in place for **2558D** w/Kohler engine only.

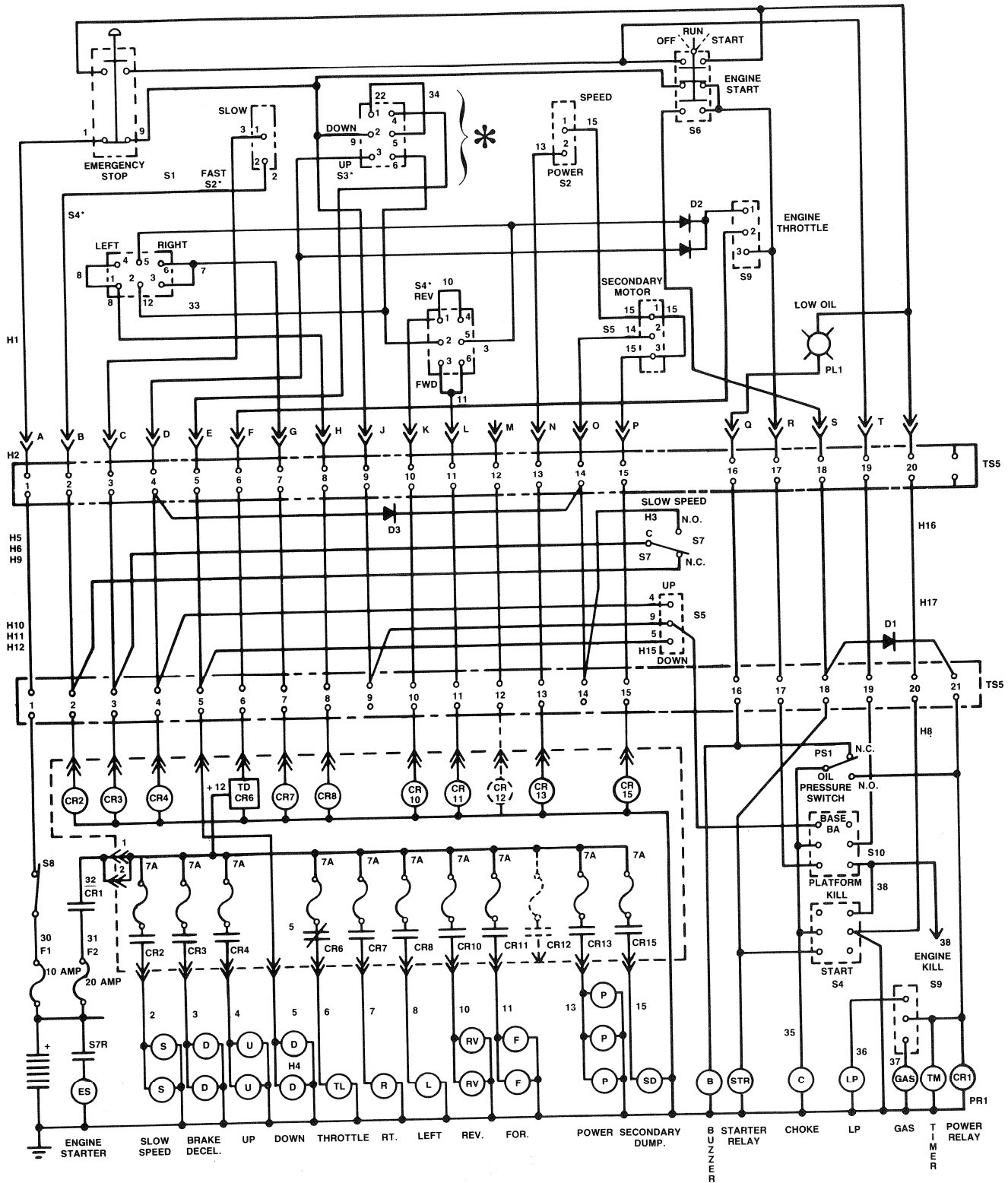
NOTE: J1 is very small, use needle-nosed pliers to pull it from the board.



For diagnostic purposes, the chart below lists the input and output terminals, and LED for the respective function. Match the column on the chart with your specific model.

INPUT	LED	OUTPUT	FUNCTION 25, 33 RT	FUNCTION 25,33 SRT	FUNCTION 3072	FUNCTION 2558D	FUNCTION 2558DF
1	1	1	Up	Not used	Up to 9200486 - Start From 9200487- Not used	Not used	Not used
2	2	2	Down	Slow Speed	Slow	Slow	Slow
3	3	3	Bypass – Decel	Brake - Decel	Decel – Pri. Dump	Brake – Decel	Brake – Decel
4	4	4	Torque	Up	Up	Up	Up
5	5	5	Throttle	Not used	Throttle	Not used	Throttle
6	6	6	Choke Pre-heat (diesel)	Throttle	Choke Pre-heat (diesel)	Throttle	Choke
7	7	7	Forward	Right	Right	Right	Right
8	8	8	Reverse	Left	Left	Left	Left
9	9	9	Steer Left	Sec. Dump	Sec. Dump	Sec. Dump	Sec. Dump
10	10	10	Steer Right	Reverse	Reverse	Reverse	Reverse
11	11	11	Steer Bypass	Forward	Forward	Forward	Forward
12	12	12	A.C. Generator (opt)	Torque	Torque	Torque	Torque

ELECTRICAL WIRING DIAGRAM HITE-MASTER (DUAL FUEL SERIES)





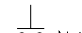

* NOTE: Switch wiring as seen from the rear of switch.

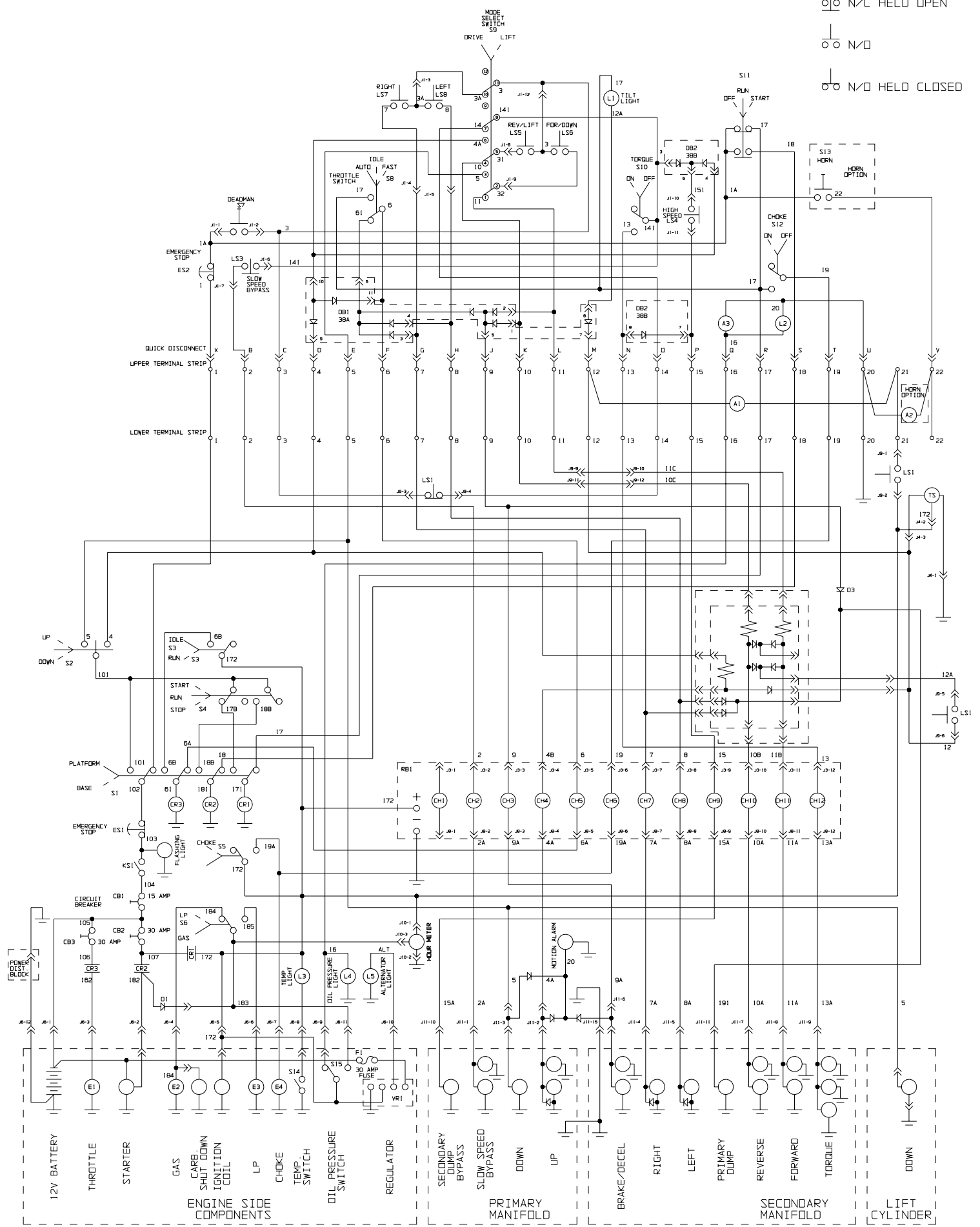
Up/Down Switch at Upper Control Box - Contacts Made With Toggle at Keyway Position 1-2, 4-5 - Center Position 1-2, 5-6 - Opposite Keyway 2-3, 5-6

Figure 38.

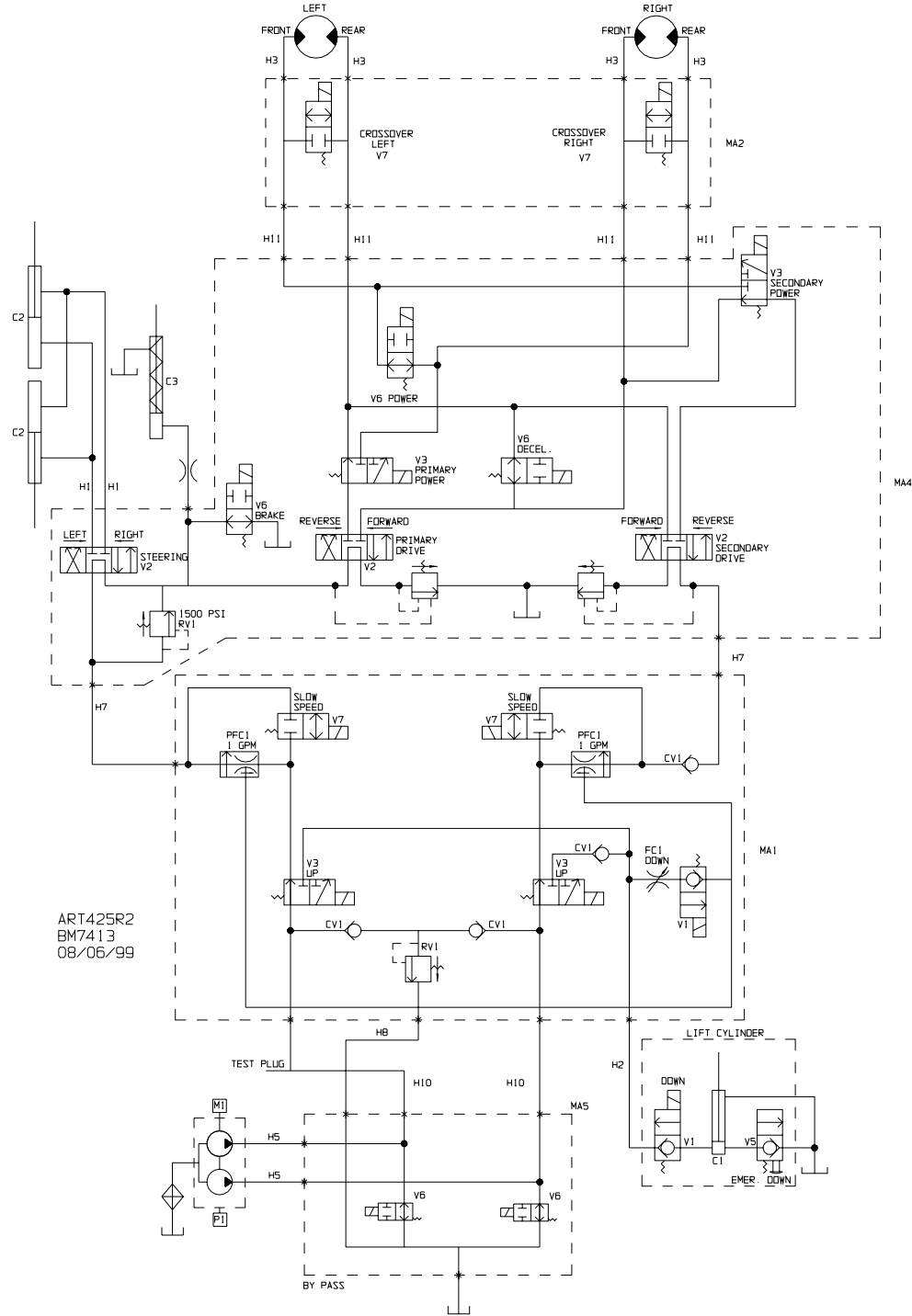
2558DF ELECTRICAL SCHEMATIC

1999 AND LATER

 N/C
 N/C HELD OPEN
 N/D
 N/D HELD CLOSED



ITEM	PART NO.	QTY.	DESCRIPTION
C1	3488	1	LIFT CYLINDER
C1	6790	SERV	SEAL KIT
C1	6787	1	WIRE HARNESS, DOWN
C2	2838	2	STEERING CYLINDER ASSY
C2	2484	SERV	CYLINDER BARREL
C2	2493	SERV	CYLINDER HEAD
C2	2494	SERV	PISTON
C2	2837	SERV	CYLINDER ROD
C2	6337	SERV	RETAINING RING
C2	6338	SERV	LOCK NUT
C2	5947	SERV	SEAL KIT
C3	2483	1	BRAKE CYLINDER ASSEMBLY
C3	2485	SERV	CYLINDER BARREL
C3	2493	SERV	CYLINDER HEAD
C3	2494	SERV	PISTON
C3	2505	SERV	CYLINDER ROD
C3	6337	SERV	RETAINING RING
C3	6338	SERV	LOCK NUT
C3	5947	SERV	SEAL KIT
CBV1	6712	2	COUNTERBALANCE VALVE
CBV1	6806		"O" RING KIT
CV1	5434	4	CHECK VALVE
CV1	5475	SERV	"O" RING KIT
F1	6156	1	FILTER ELEMENT
FC1	5963	1	FLOW CONTROL
FC1	5475	SERV	"O" RING KIT
H1	6718	2	HOSE, STEERING
H2	6720	1	HOSE, LIFT
H3	6721	4	HOSE, DRIVE
H4	6722	1	HOSE, BRAKE
H5	6723	1	HOSE
H7	5999	2	PRIMARY TO SECONDARY
H8	6225	2	HOSE
H9	5995	1	HOSE
H10	6237	2	HOSE BYPASS TO PRIMARY
H11	6429	4	HYD. HOSE, SECONDARY TO CROSSOVER
M1	6853	1	4-CYCLE GAS ENGINE
M4	6660P	2	DRIVE MOTOR (HYDRAULIC)
MA1	3595	1	PRIMARY MANIFOLD
MA2	3609	1	MANIFOLD
MA4	3480	1	SECONDARY MANIFOLD PT.
MA5	4336	1	MANIFOLD DOUBLE BYPASS
O1	7044	1	ORIFICE, FITTING ASSEMBLY
O4	2975	1	ORIFICE, FITTING (BRASS)
P1	6855	1	HYDRAULIC PUMP
PCF1		1	PRIORITY FLOW CONTROL
PCF1	5954		1.0 GPM (STD.)
PCF1		SERV	PRIORITY FLOW CONTROL
PCF1	6189		.5 GPM (SPECIAL)
PCF1	5476		"O" RING KIT
RV1	6316	2	RELIEF VALVE
RV1	5475	SERV	"O" RING KIT
V1	6973	2	2-WAY N.C. VALVE ONLY
V1	5475	SERV	"O" RING KIT
V1	6870		COIL ONLY 12V
V2	7976	3	4-WAY 3-POSITION VALVE ONLY
V2	6161	SERV	SPRING AND "O" RING KIT
V2	6870		COIL ONLY 12V
V3	6976	4	3-WAY 2-POSITION VALVE ONLY
V3	5476	SERV	"O" RING KIT
V3	6870		COIL ONLY 12V
V5	5435	1	MANUAL PULL - EMERGENCY DOWN
V5	5475	SERV	"O" RING KIT
V6	6975	5	2-WAY N.O. SPPOOL VALVE ONLY
V6	5475	SERV	"O" RING KIT
V6	6870		COIL ONLY 12V
V7	7151	4	VALVE 2 WAY N.C. SPOOL



MODEL	PRESSURE RELEASE VALVE SETTING	LIFT CAPACITY
19480	2,150 PSI	1,750#
25580	2,250 PSI	1,250#

■ DENOTES CRITICAL DIMENSION

TOLERANCE

(UNLESS OTHERWISE SPECIFIED)

REF. WORK INSTRUCTION ENG-56-022 CUSTOMER NUMBER
3+ PLACE (XXX) AND PROJECT NAME

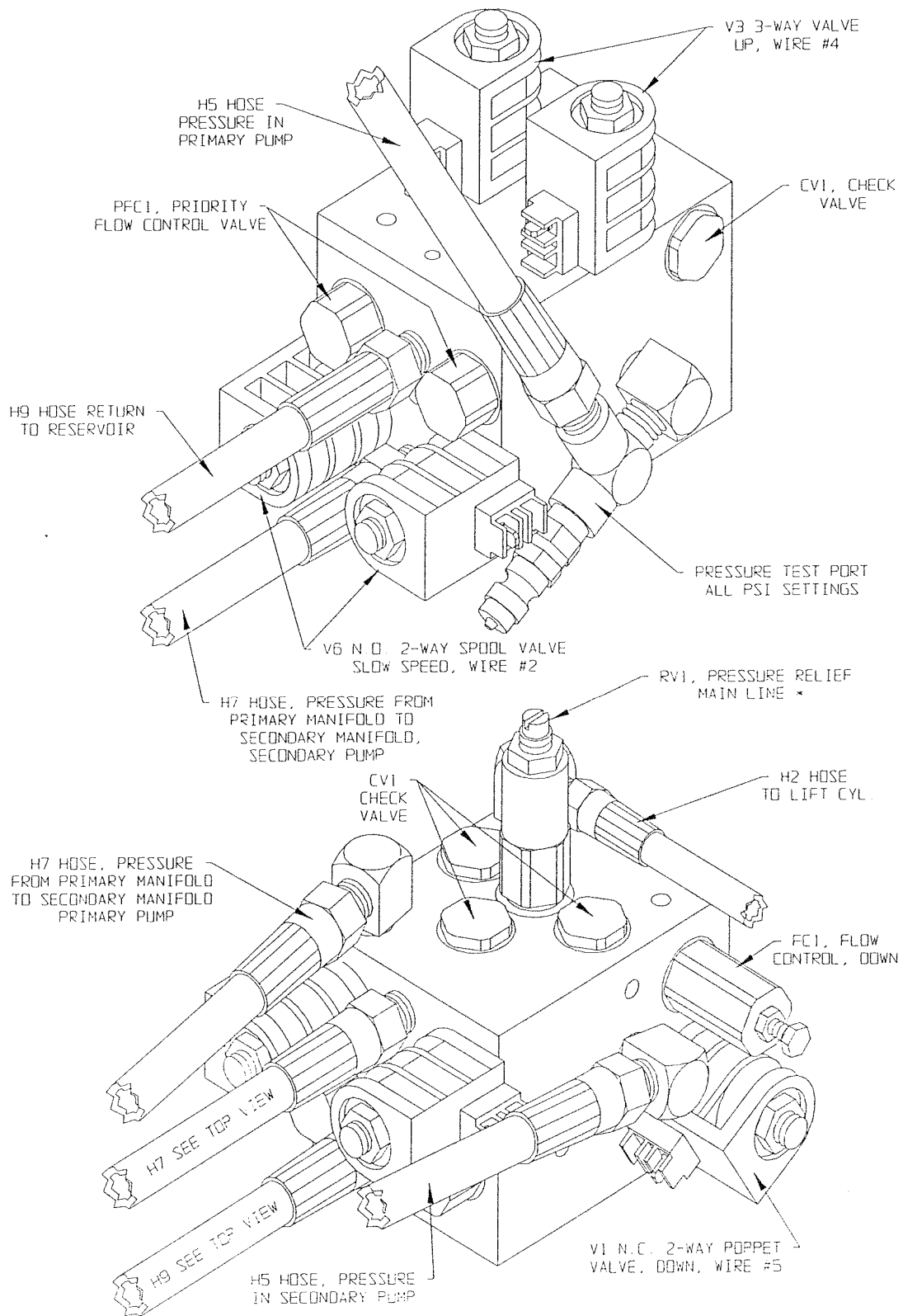


FIG. 7-1 Primary Manifold Assembly #3906

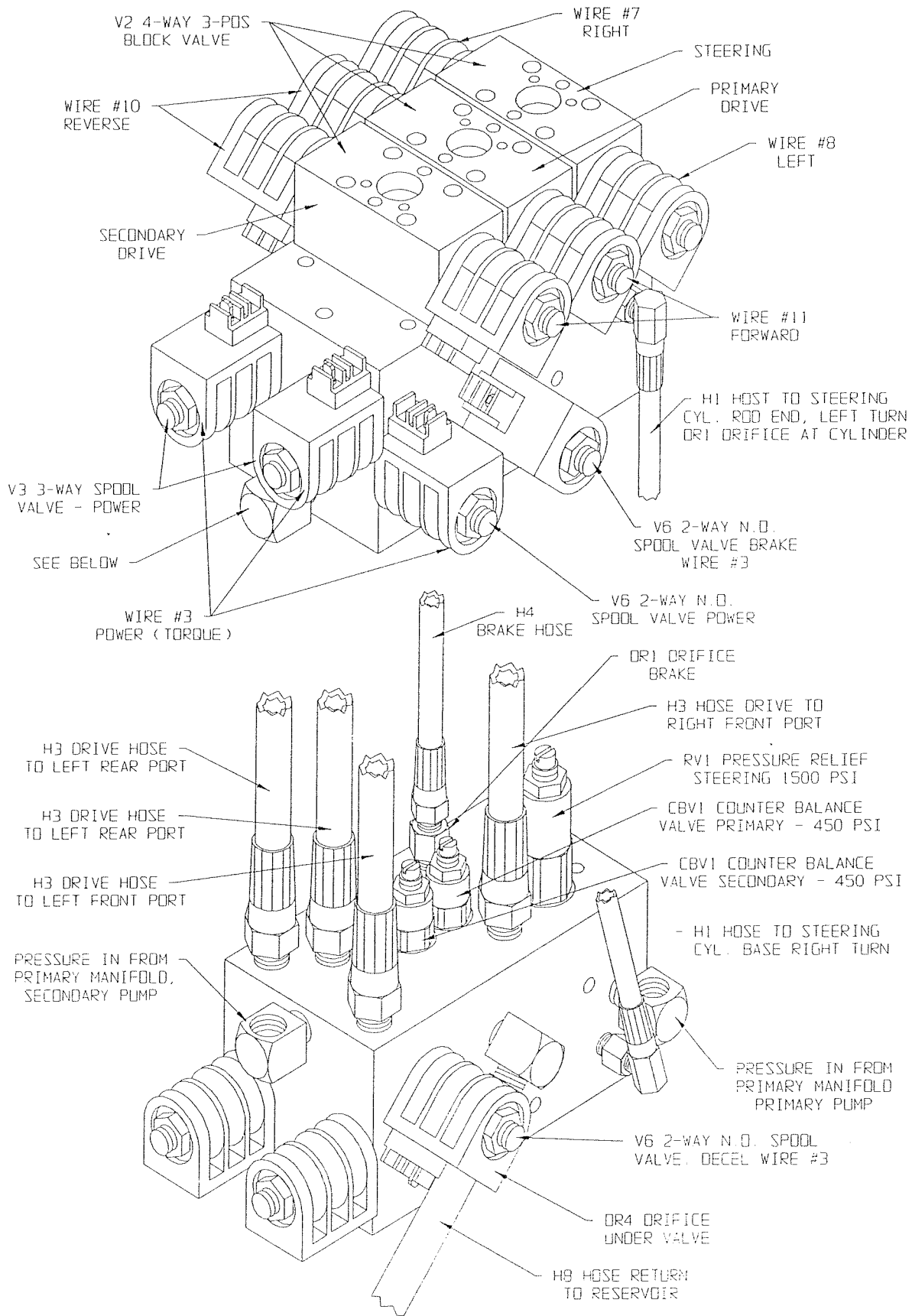


FIG. 7-2 Secondary Manifold Assembly #3907

**SYMBOL IDENTIFICATION FOR MANIFOLD
HITEMASTER DUAL FUEL SERIES**

Symbol	Quantity	Part Number	Description
C1	1	3488	Lift Cylinder w/bearings
	Service	6790	Seal Kit
C2	2	2838	Steering Cylinder Assembly
	Service	2484	Cylinder Barrel Weldment
	Service	2493	Cylinder Head
	Service	2494	Piston
	Service	2837	Cylinder Rod
	Service	6338	Nut ½ - 20 Lock
	Service	6337	Internal Retaining Ring
	Service	5947	Seal Kit
	C3	1	2483
Service		2485	Cylinder Barrel Weldment
Service		2493	Cylinder Head
Service		2494	Piston
Service		2505	Cylinder Rod
Service		6337	Internal Retaining Ring
Service		6338	Nut ½ - 20 Lock
Service		5947	Seal Kit
CBV1		2	6712
	Service	6806	O-Ring Kit
CV1	4	5434	Check Valve
	Service	5475	O-Ring Kit
F1	1	6156	Filter
FC1	1	5963	Flow Control
	Service	5475	O-Ring Kit
H1	2	6718	Steering Hose
H2	1	6720	Lift Hose
H3	4	6721	Drive Hose
H4	1	6722	Brake Hose
H5	2	6723	Hose Pump to Bypass Manifold
H7	2	5999	Hose Primary to Secondary
H8	2	6225	Hose Return to Tank
H9	1	5995	Hose
H10	2	6237	Hose Bypass to Primary Manifold
H11	4	6429	Hose Secondary to Crossover Manifold
M1	1	6853	Kohler M18 Engine
M4	2	6660P	Wheel Motor
MA1	1	3595	Primary Manifold
MA2	1	3609	Crossover Manifold
MA4	1	3480	Secondary Manifold
MA5	1	4336	Bypass Manifold
O1	1	7044	Orifice Fitting
O4	1	2975	Orifice (brass)
PI	1	6855	Pump
PFC1	2	5954	Priority Flow Control (1.0 GPM)
	Option	6189	Priority Flow Control (.5 GPM)
	Service	5476	O-Ring Kit
RV1	2	6316	Relief Valve
	Service	5475	O-Ring Kit

**SYMBOL IDENTIFICATION FOR MANIFOLD
HITEMASTER DUAL FUEL SERIES CONT'D**

Symbol	Quantity	Part Number	Description
V1	2	6973	2-Way N.C. Valve
	@	6870	12v Coil
	Service	5475	O-Ring Kit
V2	3	7976	4-Way 3-Position Valve
	@	6870	12v Coil
	Service	6161	Spring & O-Ring Kit
V3	4	6976	3-Way 2-Position Valve
	@	6870	12v Coil
	Service	5476	O-Ring Kit
V5	1	5435	Manual Pull Valve
	Service	5475	O-Ring Kit
V6	5	6975	2-Way N.O. Valve
	@	6870	12v Coil
	Service	5475	O-Ring Kit
V7	2	7151	2-Way N.C. Spool Valve
	@	6870	12v Coil
	Service	5475	O-Ring Kit

@ = 17 Coils Total

** Refer To Hydraulic Schematic For Relief Valve Setting