

HITE-MASTER WIRING DIAGRAM  
Standard Series Pre-1992

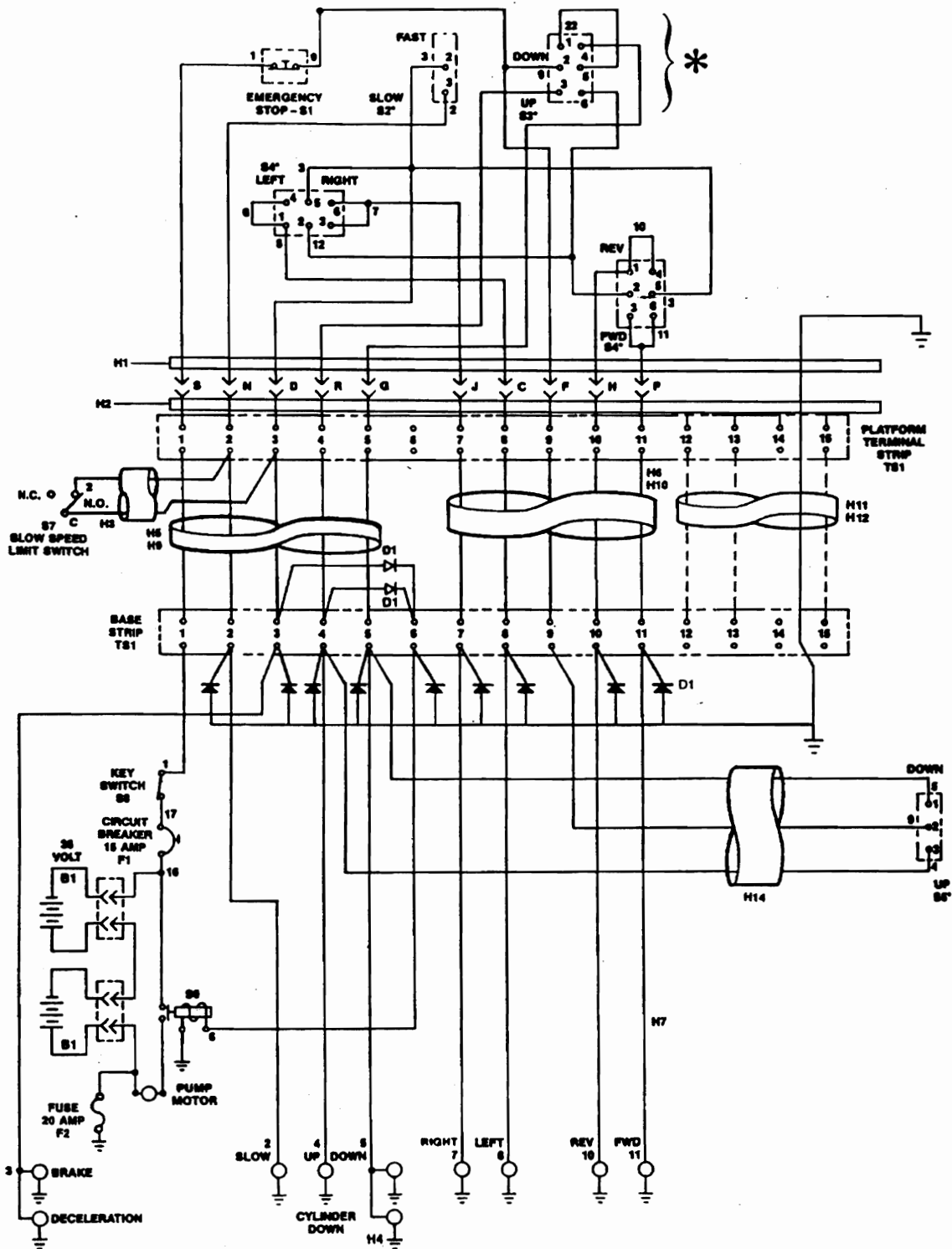
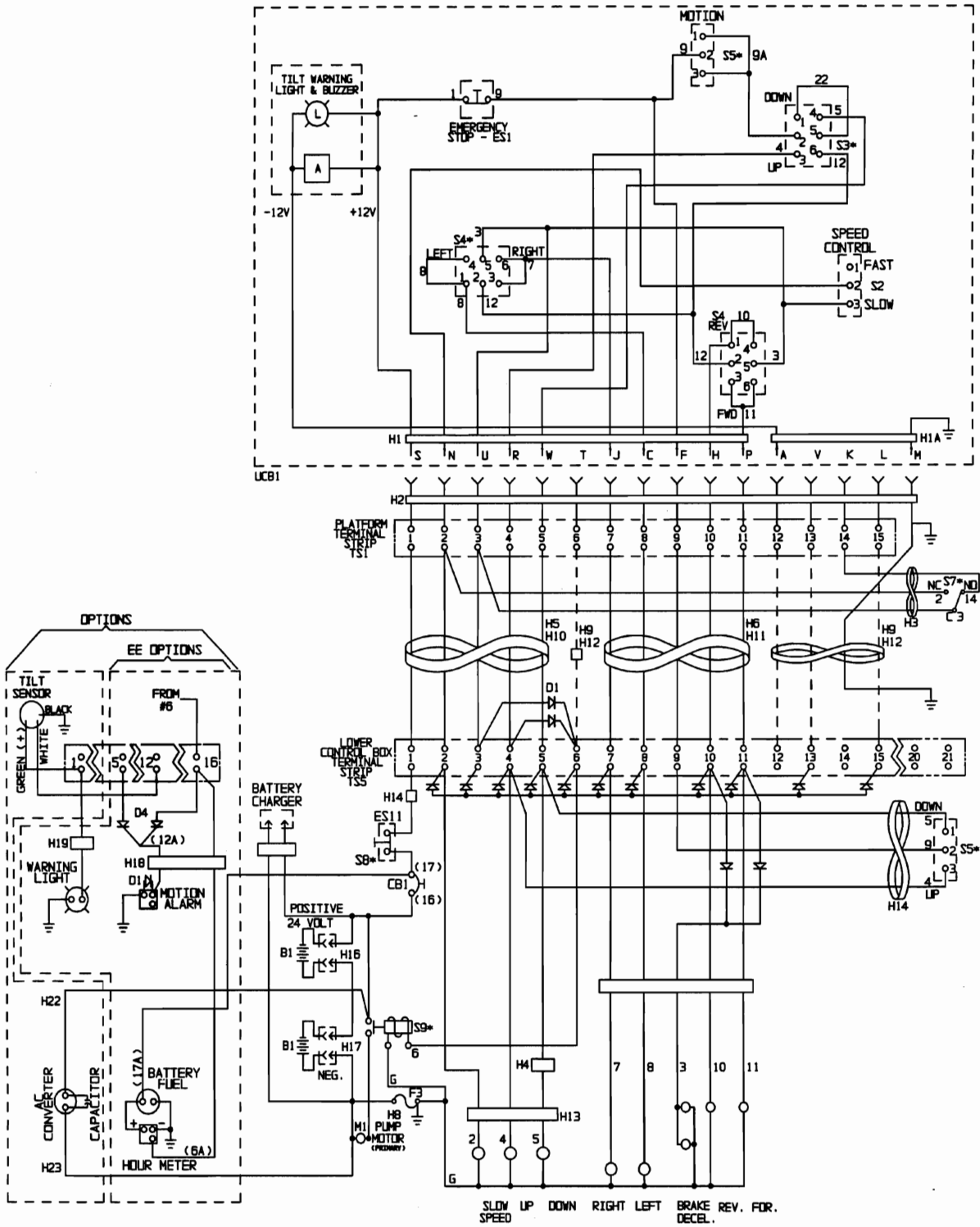


FIG. 2-1 Standard Series Electrical Schematic

TROUBLESHOOTING

**HTE-MASTER WIRING DIAGRAM**  
 Standard Series W/Motion Switch  
 1992 and Later

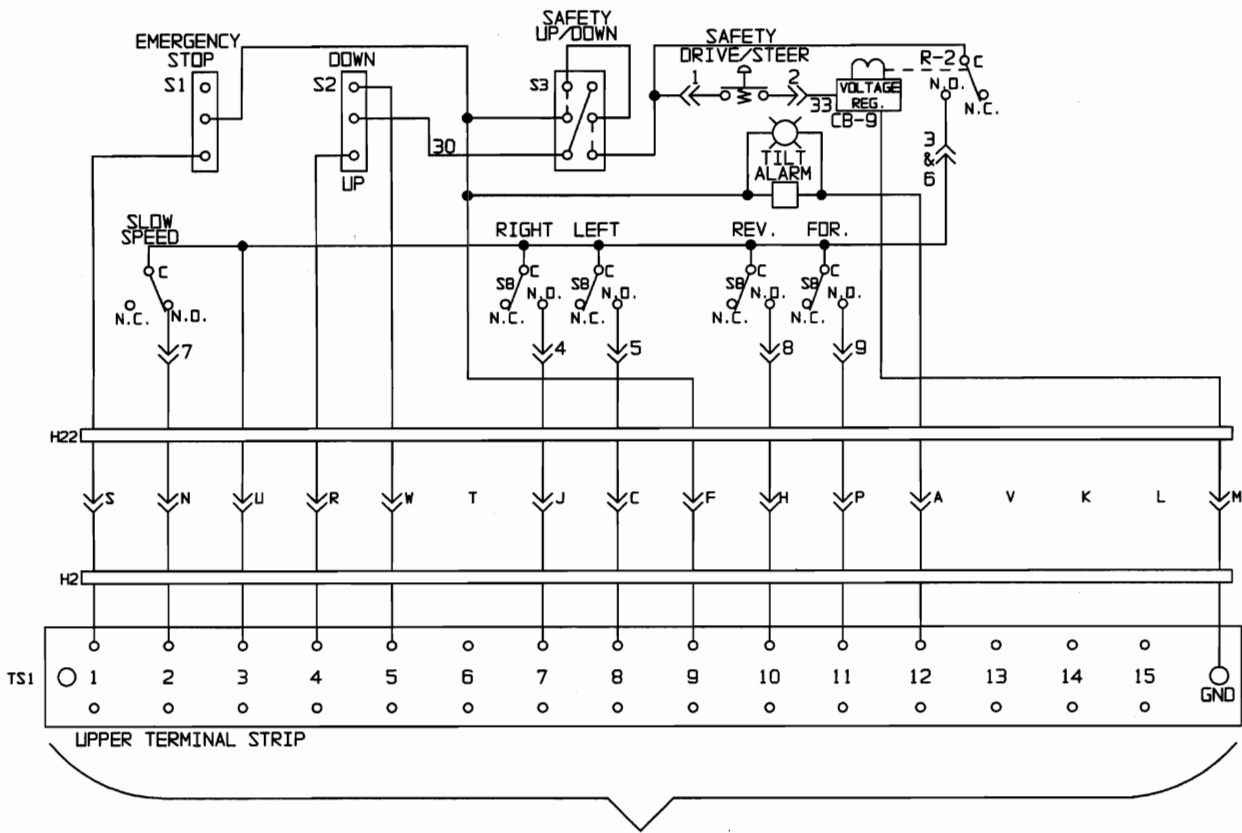


**FIG. 2-2 Standard Series Electrical Schematic**

**TROUBLESHOOTING**

# HITE-MASTER WIRING DIAGRAM Standard Series Joystick

WIRING DIAGRAM  
JOYSTICK CONTROL BDX - STANDARD DRIVE



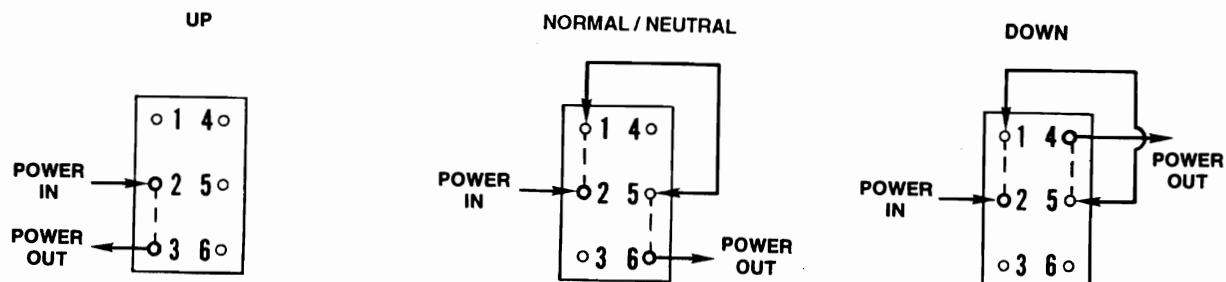
WIRING IS NOT CHANGED FROM  
UPPER TERMINAL STRIP TO BASE

ART-198R1  
BM11474

**FIG. 2-3 Standard Series Electrical Schematic Joystick**

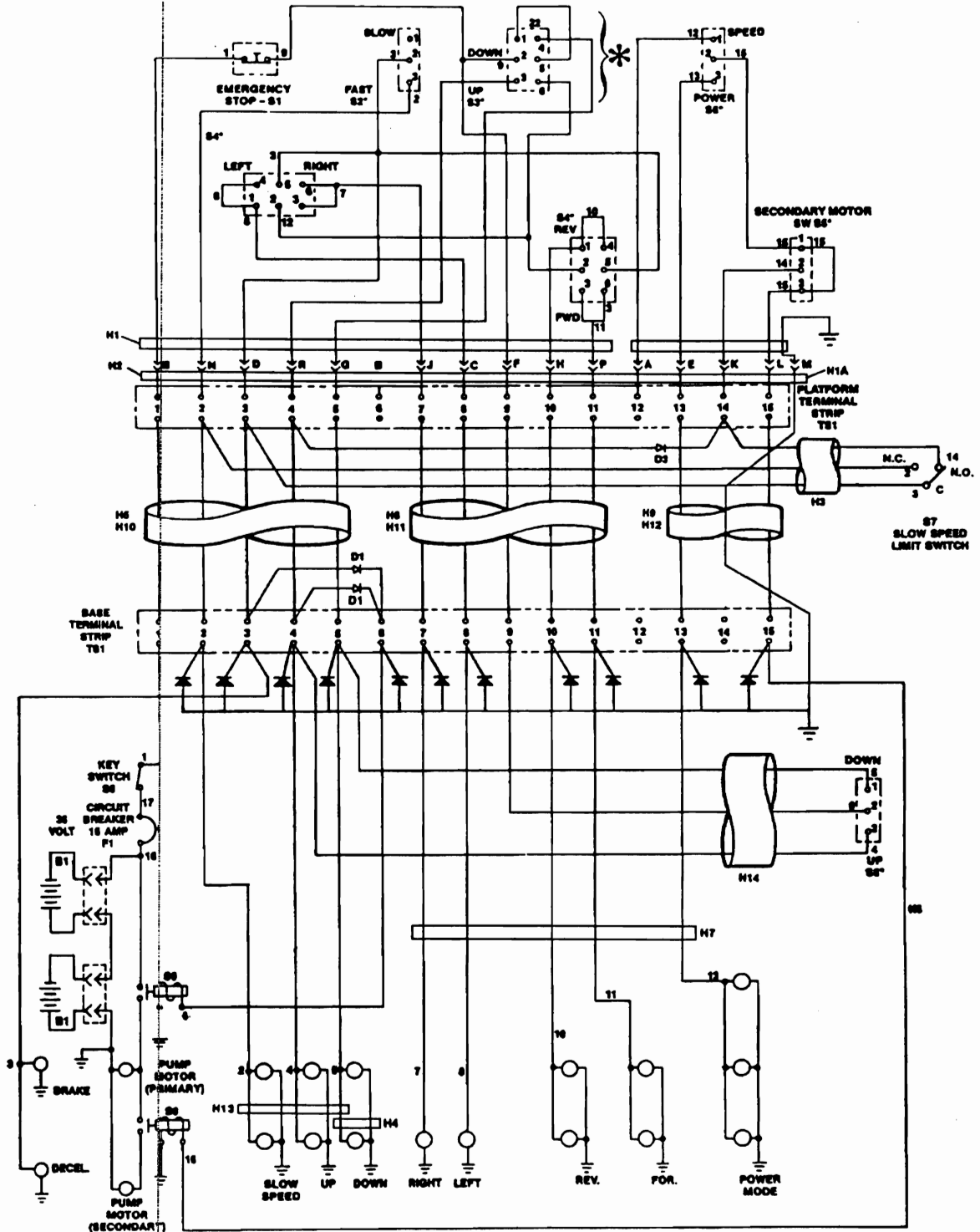
## SYMBOL IDENTIFICATION FOR STANDARD SERIES

Symbol	Quantity	Part Number	Description
B1	6	5970	Battery 6 Volt
D1	11	6070	Diode Assembly 2 amp 600 volt PRV
F1	1	7235	15 amp Circuit Breaker
F2	1	7275	20 amp Fuse
H1	1	5982	Harness Control Box Pre-1992
	1	7657	Harness Control Box After 1-1-1992
H2	1	5983	Harness to Control Box Pre-1992
	1	7656	Harness to Control Box After 1-1-1992
H3	1	7070	Harness Limit Switch
H4	1	6787	Harness Down Valve
H5	1	6739	Beam Harness 19ft. #1-#5
H6	1	6740	Beam Harness 19ft. #7-#11
H7	1	6805	Harness Component Tray
H8	1	6809	Harness Crossover
H9	1	6742	Beam Harness 25ft. #1-#5
H10	1	6743	Beam Harness 25ft. #7-#11
H11	1	6741	Beam Harness 19ft. #12-#15
H12	1	6744	Beam Harness 25ft. #12-#15
H14	1	6764	Harness Component Tray
S1	1	7800	Emergency Stop Switch
S2	1	5630	Switch, Slow / Fast
S3	1	5979	Switch, Up / Down
S4	2	5694	Switch, Steering, Forward / Reverse
S5	1	5230	Switch, Lower Control Panel Up / Down
S7	1	6715	Switch, Slow Speed Limit
S8	1	5936	Key Switch with Keys
	Service	6117	Key Only
S9	1	6674	Motor Contactor
TS1	2	5991	Terminal Strip #1-#15
	2	7817	Terminal Strip Backing #1-#15
		6947	Terminal Strip #1-#22
		7970	Terminal Strip Backing #1-#22
UCB2	1	2107	Control Box Pre-1992
	1	4940	Control Box After 1-1-1992



## TROUBLESHOOTING

HITE-MASTER WIRING DIAGRAM  
High Torque Series Pre-1992



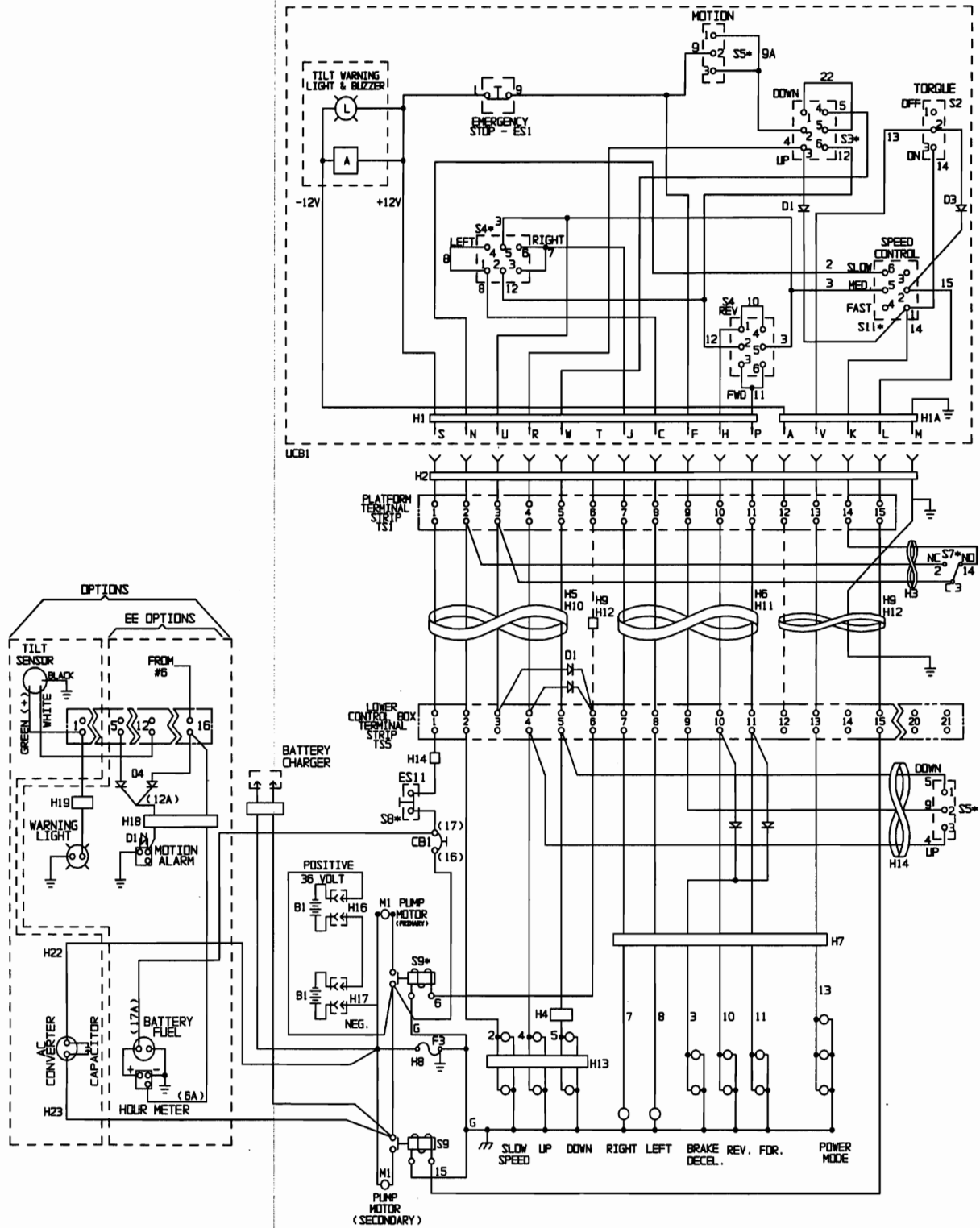
\* NOTE: Switch wiring as seen from the rear of switch.

Up/Down Switch at Upper Control Box - Contacts Made With Toggle at Keyway Position 1-2, 4-5 - Center Position 1-2, 5-6 - Opposite Keyway 2-3, 5-6

FIG. 2-4 High Torque Series Electrical Schematic

TROUBLESHOOTING

**HITE-MASTER WIRING DIAGRAM**  
**High Torque Series W/Motion Switch**  
**1992 and Later**



**FIG. 2-5 High Torque Series Electrical Schematic**

# HITE-MASTER WIRING DIAGRAM High Torque Series Joystick

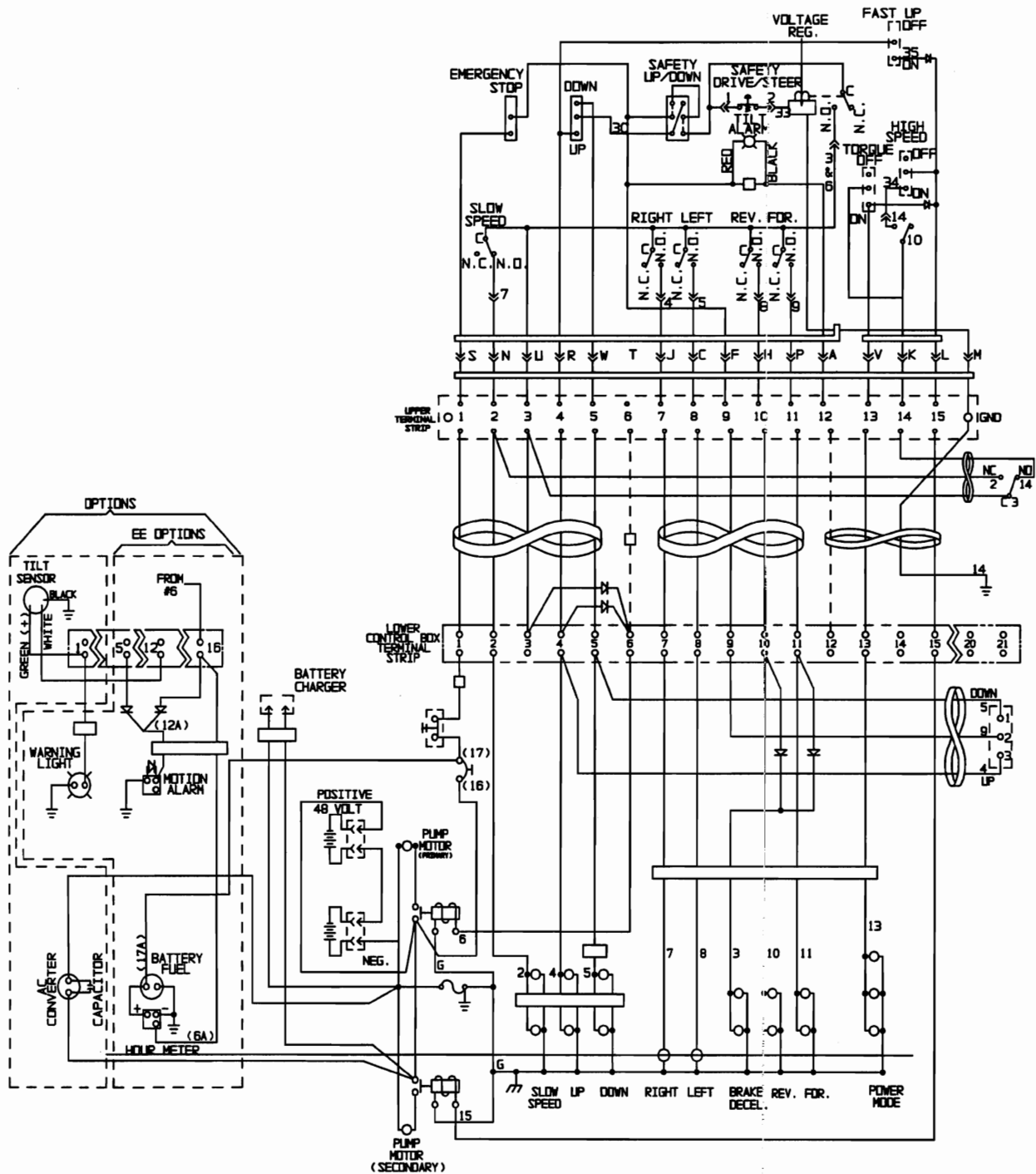
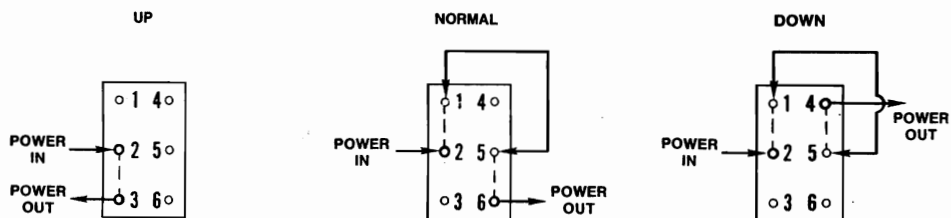


FIG. 2-6 High Torque Series Electrical Schematic Joystick

## SYMBOL IDENTIFICATION FOR HIGH TORQUE

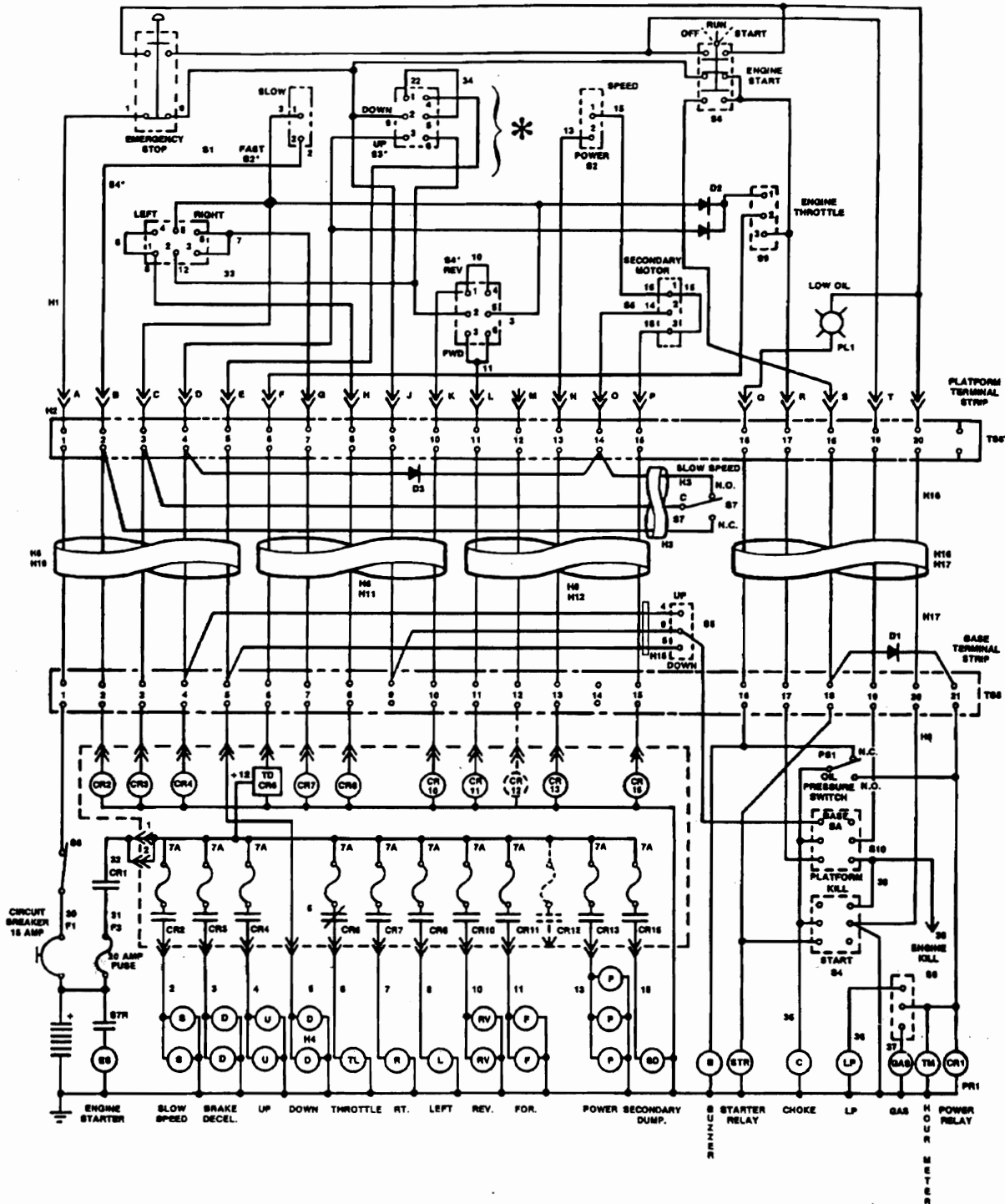
Symbol	Quantity	Part Number	Description
B1	6	5970	Battery 6 volt Deep Cycle
D1	13	6070	Diode Assembly 3 amp 600 volt PRV
D3	1	6241	Diode Assembly 3 amp 600 volt PRV
F1	1	7235	15 amp Circuit Breaker
F2	1	7275	20 amp Fuse
H1	1	5982	Harness Control Box Pre-1992
	1	7657	Harness Control Box After 1-1-1992
HA1	1	6296	Wire Set (HT Series) Pre-1992
	1	7658	Wire Set (HT Series) After 1-1-1992
H2	1	5983	Harness to Control Box Pre-1992
	1	7656	Harness to Control Box After 1-1-1992
H3	1	7070	Harness, Limit Switch
H4	1	6787	Harness, Down Valve
H5	1	6739	Beam Harness 19ft. #1-#5
H6	1	6740	Beam Harness 19ft #7-#11
H7	1	6765	Harness, Component Tray
H8	1	6763	Harness, Crossover
H9	1	6741	Beam Harness 19ft. #13-#15
H10	1	6742	Beam Harness 25ft. #1-#5
H11	1	6743	Beam Harness 25ft #7-#11
H12	1	6744	Beam Harness 25ft #13-#15
H13	1	6766	Harness, Component Tray
H14	1	6764	Harness, Component Tray Secondary
S1	1	7800	Emergency Stop Switch
S2	1	5630	Switch, Slow / Fast
S3	1	5979	Switch, Up / Down
S4	2	5694	Switch, Steering, Forward / Reverse
S5	2	5230	Switch, Lower Up / Down, Second Motor
S6	1	6234	Switch, Power / Speed
S7	1	6715	Switch, Slow Speed Limit
S8	1	5936	Key Switch
	Service	6117	Key Only
S9	2	6674	Motor Contactor
TS1	2	5991	Terminal Strip #1-#15
	2	7817	Terminal Strip Backing #1-#15
	2	6947	Terminal Strip #1-#22
	2	7970	Terminal Strip Backing #1-#22
UCB1	1	2992	Upper Control Box Pre-1992
	1	4920	Upper Control Box After 1-1-1992



## TROUBLESHOOTING



HITE-MASTER WIRING DIAGRAM  
Dual Fuel Series Pre-1992



\* NOTE: Switch wiring as seen from the rear of switch.

Up/Down Switch at Upper Control Box - Contacts Made With Toggle at Keyway Position 1-2, 4-5 -  
Center Position 1-2, 5-6 - Opposite Keyway 2-3, 5-6

FIG. 2-7 Dual Fuel Series Electrical Schematic

TROUBLESHOOTING

HITE-MASTER WIRING DIAGRAM  
 Dual Fuel Series W/Motion Switch  
 1992 and Later

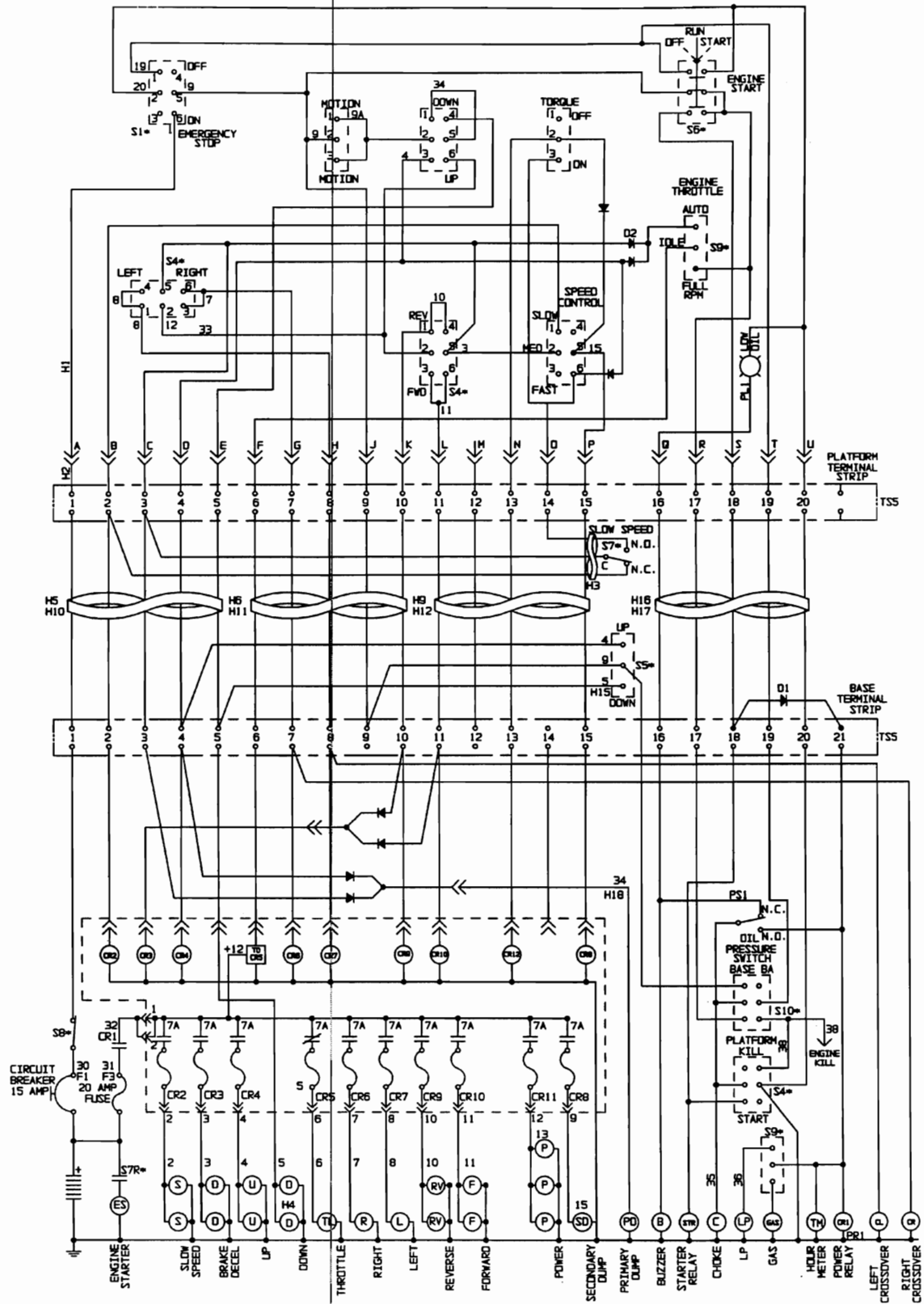


FIG. 2-8 Dual Fuel Series Electrical Schematic

**TROUBLESHOOTING**

# HITE-MASTER WIRING DIAGRAM Dual Fuel Series Joystick

ART586 R1  
BM13019  
07/07/97

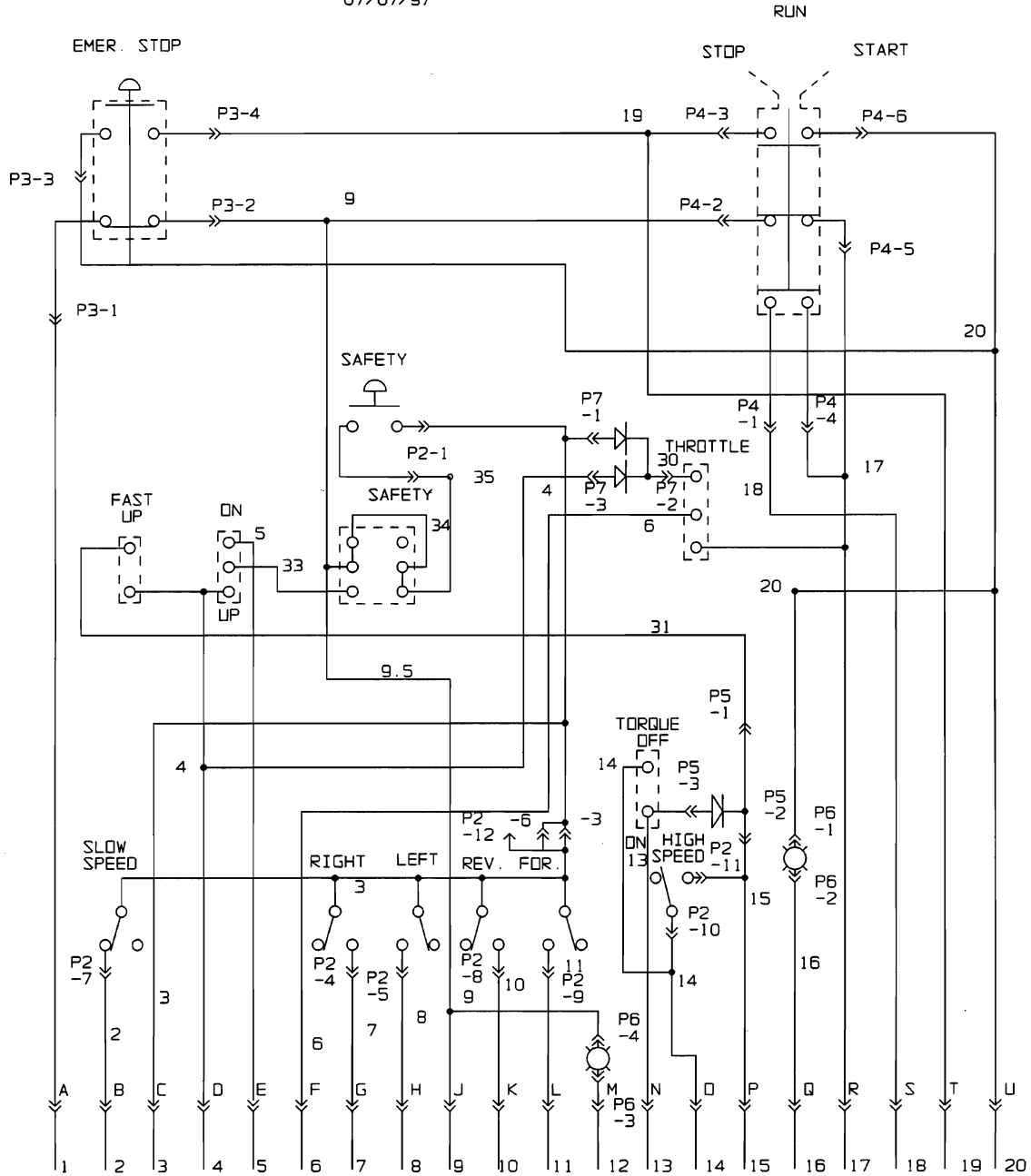


FIG. 2-9 Dual Fuel Series Electrical Schematic Joystick

## SYMBOL IDENTIFICATION FOR DUAL FUEL

Symbol	Quantity	Part Number	Description
D1	1	6070	Diode Assembly 3 amp 600 volt
D2	1	6946	Diode Assembly 3 amp 600 volt
D3	1	6241	Diode Assembly 3 amp 600 volt
F1	1	7235	15 amp Circuit Breaker
F3	1	6908	20 amp Fuse
H1	1	8253	Harness, Control Box
H2	1	6882	Harness to Control Box
H3	1	7070	Harness, Limit Switch
H4	1	6787	Harness, Cylinder Down Valve
H5	1	6949	Beam Harness 19ft. #1-#5
H6	1	6950	Beam Harness 19ft. #6-#10
H7	1	6765	Harness, Comp. Tray Sec.Manifold
H8	1	6965	Harness, Base Engine Controls
H9	1	6951	Beam Harness 19ft #11-#15
H10	1	6954	Beam Harness 25ft. #1-#5
H11	1	6955	Beam Harness 25ft. #6-#10
H12	1	6956	Beam Harness 25ft. #11-#15
H13	1	6766	Harness, Comp. Tray Pri.Manifold
H14	1	6764	Harness Comp. Tray Base Controls
H15	1	6966	Harness, Lower Lift Switch
H16	1	6952	Beam Harness 19ft. #16-#20
H17	1	6957	Beam Harness 25ft. #16-#20
PL1	1	6906	Indicator Light
PR1	1	6889	Power Relay
PS1	1	6887	Oil Pressure Switch
STR	1	6979	Start Solenoid
S1	1	7800	Emergency Stop Switch
	Service	8082	Contact Block N.O.
	Service	8083	Contact Block N.C.
S2	1	5630	Switch, Slow / Fast
S3	1	5979	Switch, Up / Down
S4	2	5694	Switch, Steering, Forward/Reverse
S5	2	5230	Switch, Motion, Lower Up / Down
S6	1	8075	Switch, Selector 3 Position
	1	8076	Base Mounting W/2 Contact Blocks
	1	8082	Contact Block N.O.
S7	1	6715	Switch, Slow Speed Limit
S8	1	5936	Key Switch
	Service	6117	Key Only
S9	1	6905	Switch, Fuel Selector
S10	1	5275	Switch, Platform / Base
TS5	2	6947	Terminal Strip #1 - #22
	2	7970	Terminal Strip Backing #1 -

HITE-MASTER HYDRAULIC DIAGRAM  
Standard Series

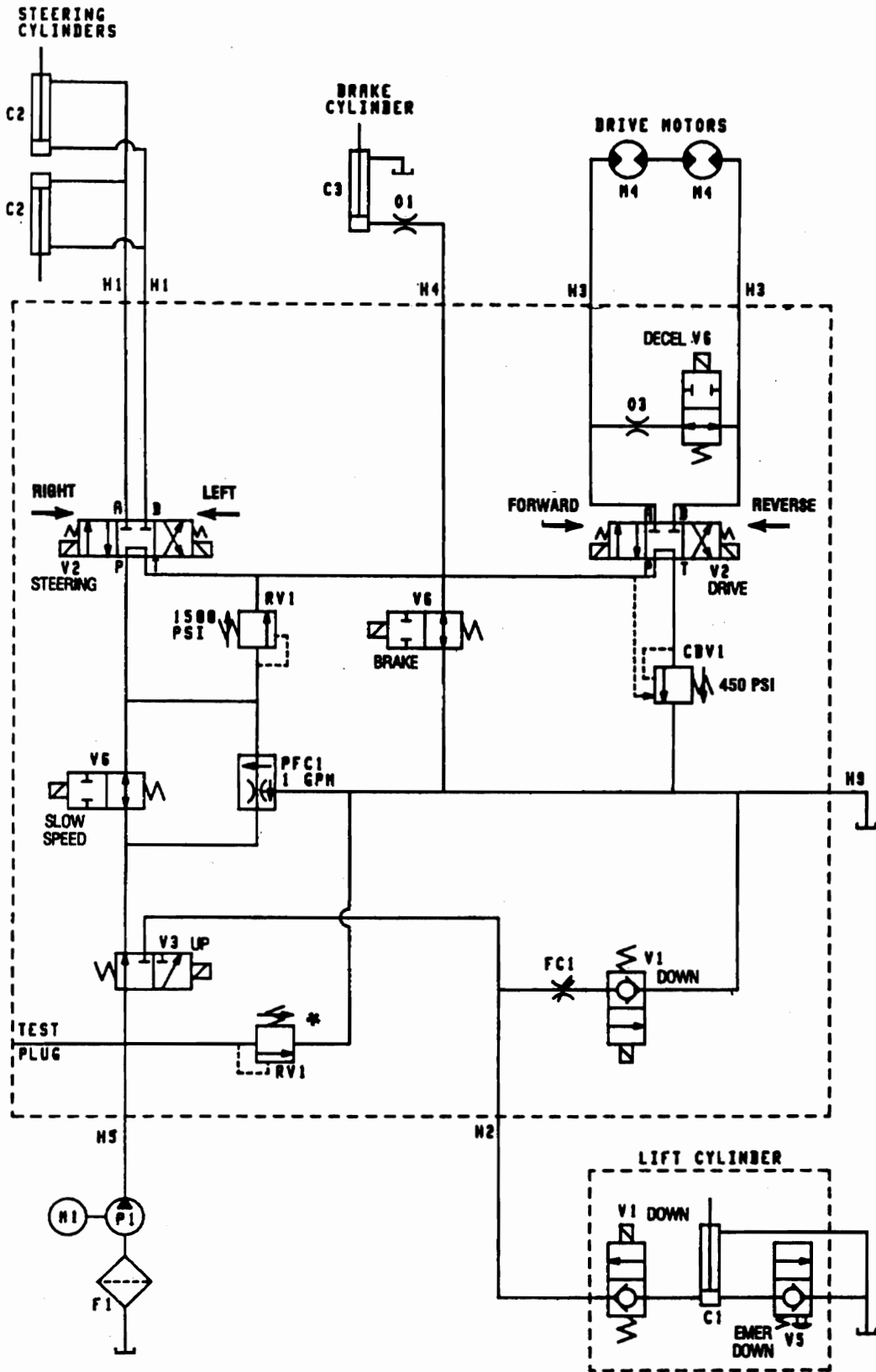
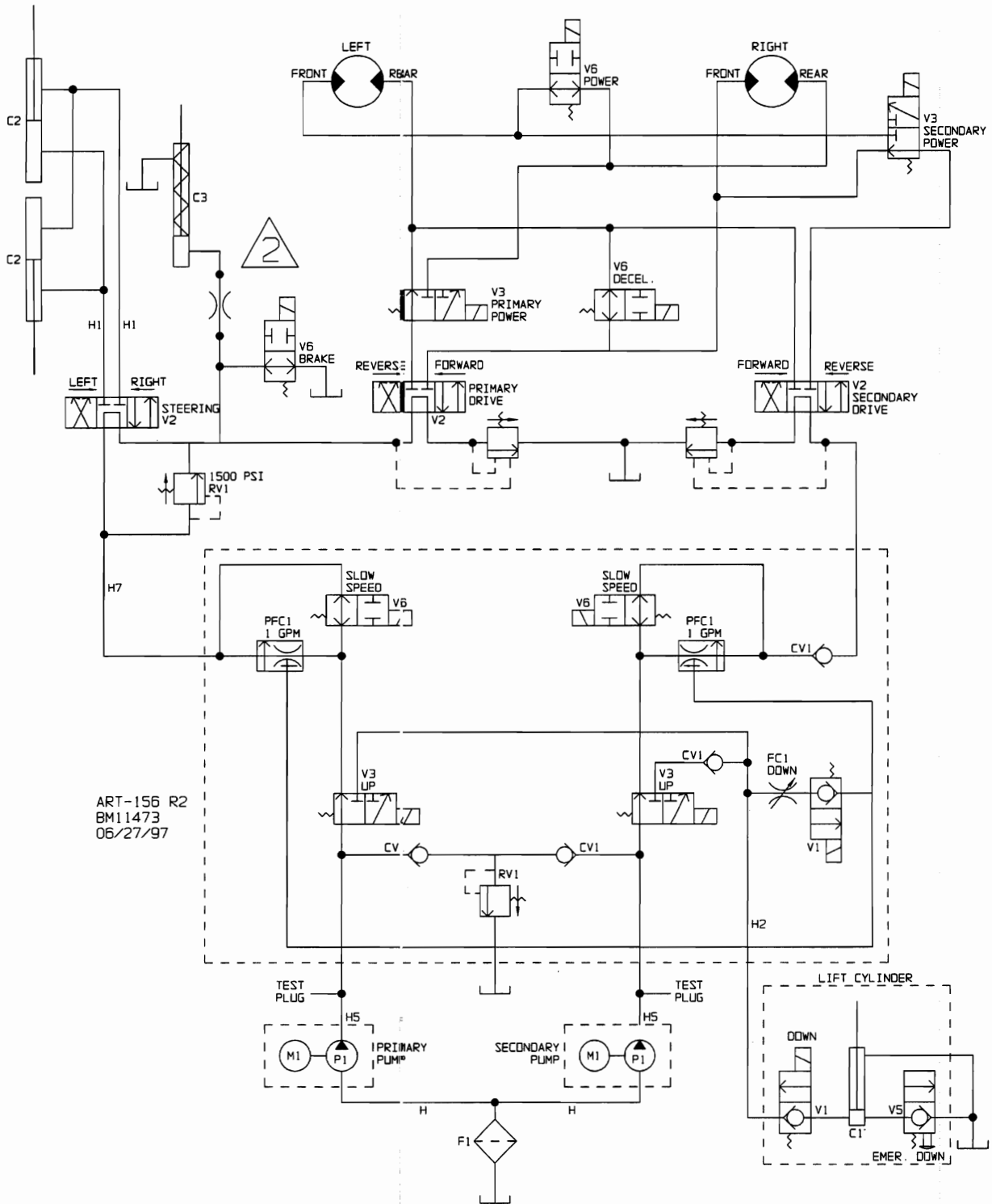


FIG. 2-10 Standard Series Hydraulic Schematic

TROUBLESHOOTING

## HITE-MASTER HYDRAULIC DIAGRAM High Torque Series



**FIG. 2-11 High Torque Series Hydraulic Schematic**

**TROUBLESHOOTING**

**HITE-MASTER HYDRAULIC DIAGRAM**  
High Torque Series

ITEM	PART NO.	QTY.	DESCRIPTION
C1	3488	1	LIFT CYLINDER
C1	6790	SERV	SEAL KIT
C1	6787	1	WIRE HARNESS, DOWN
C2	2838	2	STEERING CYLINDER ASSYMBLY
C2	2484	SERV	CYLINDER BARREL
C2	2493	SERV	CYLINDER HEAD
C2	2494	SERV	PISTON
C2	2837	SERV	CYLINDER ROD
C2	6337	SERV	RETAINING RING
C2	6338	SERV	LOCK NUT
C2	5947	SERV	SEAL KIT
C3	2483	1	BRAKE CYLINDER ASSEMBLY
C3	2485	SERV	CYLINDER BARREL
C3	2493	SERV	CYLINDER HEAD
C3	2494	SERV	PISTON
C3	2505	SERV	CYLINDER ROD
C3	6337	SERV	RETAINING ROD
C3	6338	SERV	LOCK NUT
C3	5947	SERV	SEAL KIT
CBV1	6712	2	COUNTERBALANCE VALVE
CBV1	6806		"O" RING KIT
CV1	5434	4	CHECK VALVE
CV1	5475	SERV	"O" RING KIT
F1	6156	1	FILTER ELEMENT
FC1	5963	1	FLOW CONTROL
FC1	5475	SERV	"O" RING KIT
H1	6718	2	HOSE, STEERING
H2	6720	1	HOSE, LIFT
H3	6721	2	HOSE, DRIVE
H4	6722	1	HOSE, BRAKE
H5	6723	1	HOSE
H7	5999	2	HOSE
H8	6225	2	HOSE
H9	5995	1	HOSE
M1	6661	2	36 DVC MOTOR
M4	6660P	2	DRIVE MOTOR (HYDRAULIC)
MA1	3595	1	PRIMARY MANIFOLD
MA4	3480	1	SECONDARY MANIFOLD PT.
O1	7044	1	DRIFICE, FITTING ASSEMBLY
O4	2975	1	DRIFICE, FITTING (BRASS)
P1	6662	1	HYDRAULIC PUMP
PFC1		1	PRIORITY FLOW CONTROL
PCF1	5954		1.0 GPM (STD.)
PCF1		SERV	PRIORITY FLOW CONTROL
PCF1	6189		.5 GPM (SPECIAL)
PCF1	5476		"O" RING KIT
RV1	6316	2	RELIEF VALVE
RV1	5475	SERV	"O" RING KIT
V1	6973	2	2-WAY N.C. VALVE ONLY
V1	5475	SERV	"O" RING KIT
V1	6803		COIL ONLY 36 VDC
V2	7976	3	4-WAY 3-POSITION VALVE ONLY
V2	6161	SERV	SPRING AND "O" RING KIT
V2	6803		COIL ONLY 36 VDC
V3	6976	4	3-WAY 2-POSITION VALVE ONLY
V3	5476	SERV	"O" RING KIT
V3	6803		COIL ONLY 36 VDC
V5	5435	1	MANUAL PULL - EMERGENCY DOWN
V5	5475	SERV	"O" RING KIT
V6	6975	5	2-WAY N.O. SPOOL VALVE ONLY
V6	5475	SERV	"O" RING KIT
V6	6803		COIL ONLY 36 VDC

ART-156 R2  
BH11473  
06/27/97

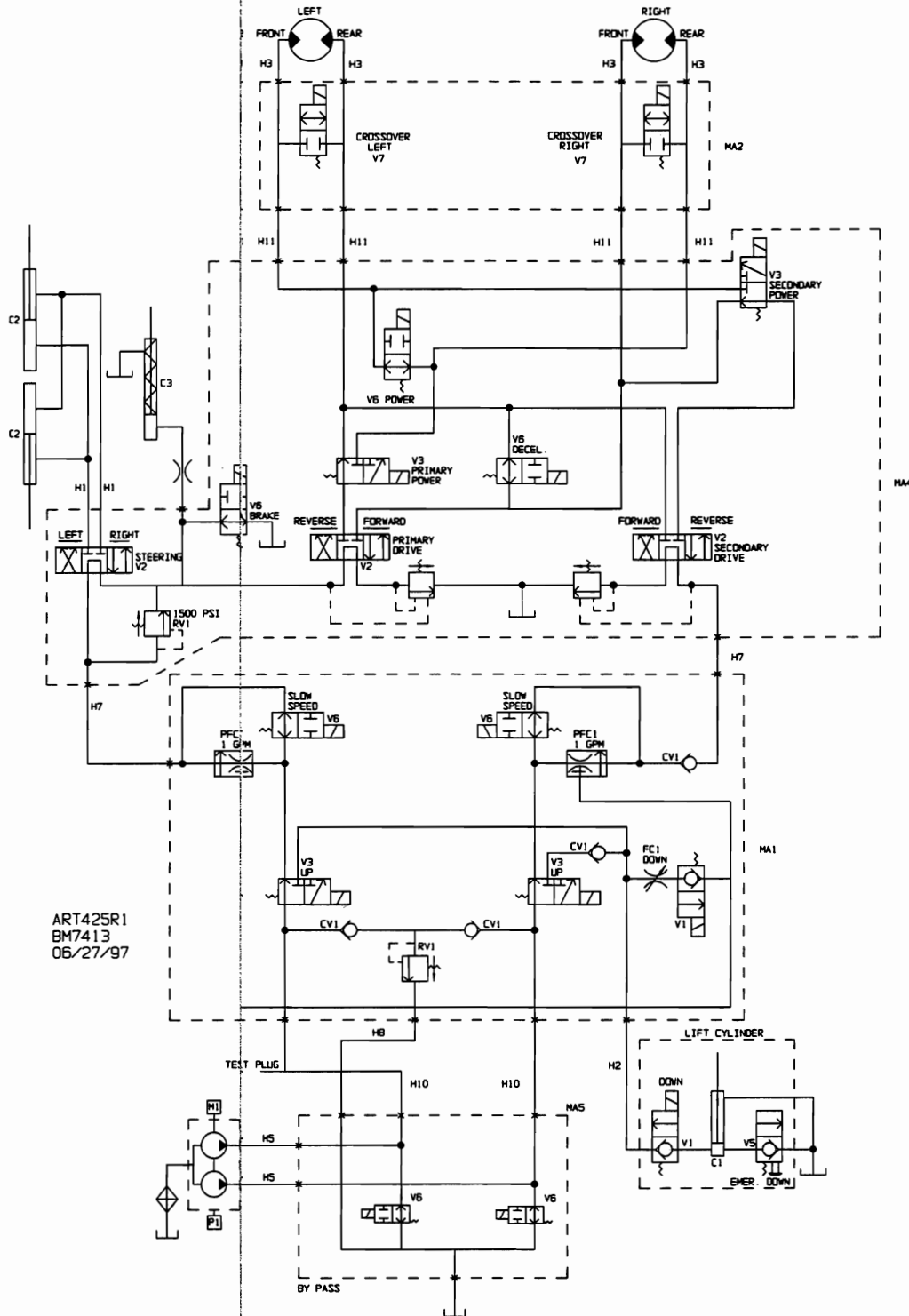
MODEL	PRESSURE RELEASE VALVE SETTING	LIFT CAPACITY
1948	1,800 PSI	1,500#
1948HT	1,800 PSI	1,500#
2548	2,000 PSI	1,000#
2548HT	2,000 PSI	1,000#
1958	2,150 PSI	1,750#
1958HT	2,150 PSI	1,750#
2558	2,250 PSI	1,250#
2558HT	2,250 PSI	1,250#

**FIG. 2-11 High Torque Series Hydraulic Schematic**

**TROUBLESHOOTING**

# HITE-MASTER HYDRAULIC DIAGRAM

## Dual Fuel Series



**FIG. 2-12 Dual Fuel Series Hydraulic Schematic**



## HITE MASTER HYDRAULIC DIAGRAM Dual Fuel Series

ITEM	PART NO.	QTY.	DESCRIPTION
C1	3488	1	LIFT CYLINDER
C1	6790	SERV	SEAL KIT
C1	6787	1	WIRE HARNESS, DOWN
C2	2838	2	STEERING CYLINDER ASSYEMBLY
C2	2484	SERV	CYLINDER BARREL
C2	2493	SERV	CYLINDER HEAD
C2	2494	SERV	PISTON
C2	2837	SERV	CYLINDER ROD
C2	6337	SERV	RETAINING RING
C2	6338	SERV	LOCK NUT
C2	5947	SERV	SEAL KIT
C3	2483	1	BRAKE CYLINDER ASSEMBLY
C3	2485	SERV	CYLINDER BARREL
C3	2493	SERV	CYLINDER HEAD
C3	2494	SERV	PISTON
C3	2505	SERV	CYLINDER ROD
C3	6337	SERV	RETAINING ROD
C3	6338	SERV	LOCK NUT
C3	5947	SERV	SEAL KIT
CBV1	6712	2	COUNTERBALANCE VALVE
CBV1	6806		"O" RING KIT
CV1	5434	4	CHECK VALVE
CV1	5475	SERV	"O" RING KIT
F1	6156	1	FILTER ELEMENT
FC1	5963	1	FLOW CONTRDL
FC1	5475	SERV	"O" RING KIT
H1	6718	2	HOSE, STEERING
H2	6720	1	HOSE, LIFT
H3	6721	4	HOSE, DRIVE
H4	6722	1	HOSE, BRAKE
H5	6723	1	HOSE
H7	5999	2	PRIMARY TO SECONDARY
H8	6225	2	HOSE
H9	5995	1	HOSE
H10	6237	2	HOSE BYPASS TO PRIMARY
H11	6429	4	HYD. HOSE, SECONDARY TO CROSSOVER
M1	6853	1	4-CYCLE GAS ENGINE
M4	6660P	2	DRIVE MOTOR (HYDRAULIC)
MA1	3595	1	PRIMARY MANIFOLD
MA2	3609	1	MANIFOLD
MA4	3480	1	SECONDARY MANIFOLD PT.
MA5	4336	1	MANIFOLD DOUBLE BYPASS
D1	7044	1	DRIFICE, FITTING ASSEMBLY
D4	2975	1	DRIFICE, FITTING (BRASS)
P1	6855	1	HYDRAULIC PUMP
PFC1		1	PRIORITY FLOW CONTROL
PCF1	5954		1.0 GPM (STD.)
PCF1		SERV	PRIORITY FLOW CONTROL
PCF1	6189		.5 GPM (SPECIAL)
PCF1	5476		"O" RING KIT
RV1	6316	2	RELIEF VALVE
RV1	5475	SERV	"O" RING KIT
V1	6973	2	2-WAY N.C. VALVE ONLY
V1	5475	SERV	"O" RING KIT
V1	6870		COIL ONLY 12V
V2	7976	3	4-WAY 3-POSITION VALVE ONLY
V2	6161	SERV	SPRING AND "O" RING KIT
V2	6870		COIL ONLY 12V
V3	6976	4	3-WAY 2-POSITION VALVE ONLY
V3	5476	SERV	"O" RING KIT
V3	6870		COIL ONLY 12V
V5	5435	1	MANJAL PULL - EMERGENCY DOWN
V5	5475	SERV	"O" RING KIT
V6	6975	5	2-WAY N.O. SPOOL VALVE ONLY
V6	5475	SERV	"O" RING KIT
V6	6870		COIL ONLY 12V
V7	7151		VALVE 2 WAY N.C. SPOOL

MODEL	PRESSURE RELEASE VALVE SETTING	LIFT CAPACITY
1948D	2,150 PSI	1,750#
2558D	2,250 PSI	1,250#

ART425R1  
BM7413  
06/27/97

**FIG. 2-12 Dual Fuel Series Hydraulic Schematic**

**TROUBLESHOOTING**

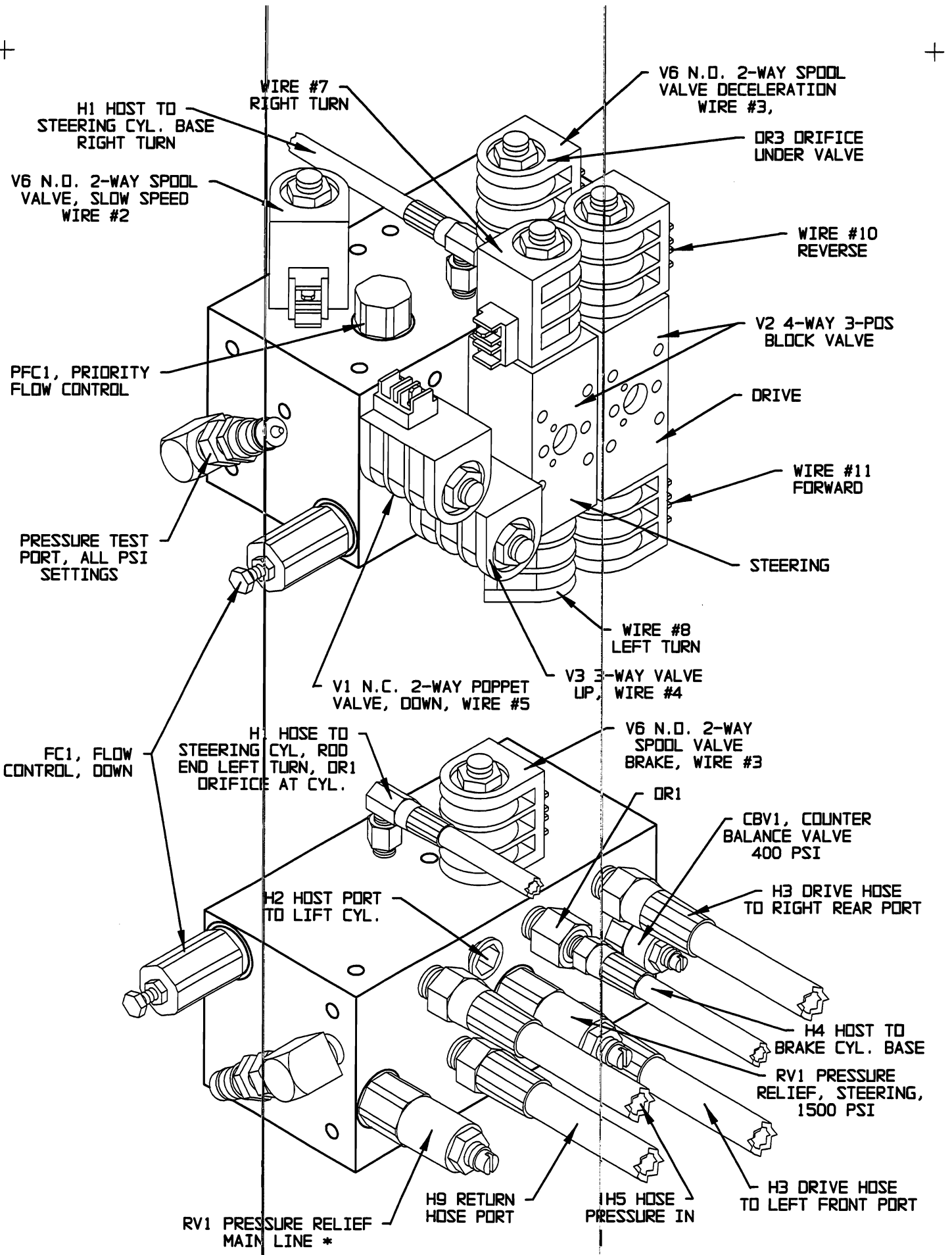


FIG. 7-1 Standard Manifold Assembly

**SYMBOL IDENTIFICATION FOR MANIFOLD  
HITEMASTER STANDARD SERIES**

Symbol	Quantity	Part Number	Description	
C1	1	3488	Lift Cylinder w/bearings	
	Service	6790	Seal Kit	
C2	2	2838	Steering Cylinder Assembly	
	Service	2484	Cylinder Weldment	
	Service	2493	Cylinder Head	
	Service	2494	Piston	
	Service	2837	Cylinder Rod	
	Service	6337	Internal Retaining Ring	
	Service	6338	Nut ½ - 20 Lock	
	Service	5947	Seal Kit	
	C3	1	2483	Brake Cylinder Assembly
		Service	2485	Cylinder Weldment
Service		2493	Cylinder Head	
Service		2494	Piston	
Service		2504	Cylinder Rod	
Service		6337	Internal Retaining Ring	
Service		6338	Nut ½ - 20 Lock	
Service		5947	Seal Kit	
CBV1		1	6712	Counter Balance Valve
	Service	6806	O-Ring Kit	
F1	1	6156	Filter	
FC1	1	5963	Flow Control	
	Service	5475	O-Ring Kit	
H1	2	6718	Steering Hose	
H2	1	6720	Lift Hose	
H3	2	6721	Drive Hose	
H4	1	6722	Brake Hose	
H5	1	6723	Hose Pump to Manifold	
H9	1	6225	Return Hose	
H10	1	6798	Crossover Hose	
H11	5	6458	Return Line	
H12	1	6869	Hose Tank to Filter	
M1	1	6661	36v Motor	
M5	2	6660P	Drive Motor	
	Service	6814	Seal Kit	
MA3	1	3239	Primary Manifold	
O1	1	6107	Orifice Fitting Assembly	
O3	1	2975	Orifice Fitting (brass)	
P1	1	6662	Pump	
PFC1	1	5954	Priority Flow Control 1.0 GPM (standard)	
	Option	6189	Priority Flow Control .5 GPM (special)	
	Service	5475	O-Ring Kit	
RV1	2	6316	Relief Valve	
	Service	5475	O-Ring Kit	
V1	2	6973	2-Way N.C. Valve	
	@	6803	36v Coil	
	Service	5475	O-Ring Kit	
V2	2	7976	4-Way 3 Position Valve	
	@	6803	36v Coil	
	Service	6161	Spring and O-Ring Kit	

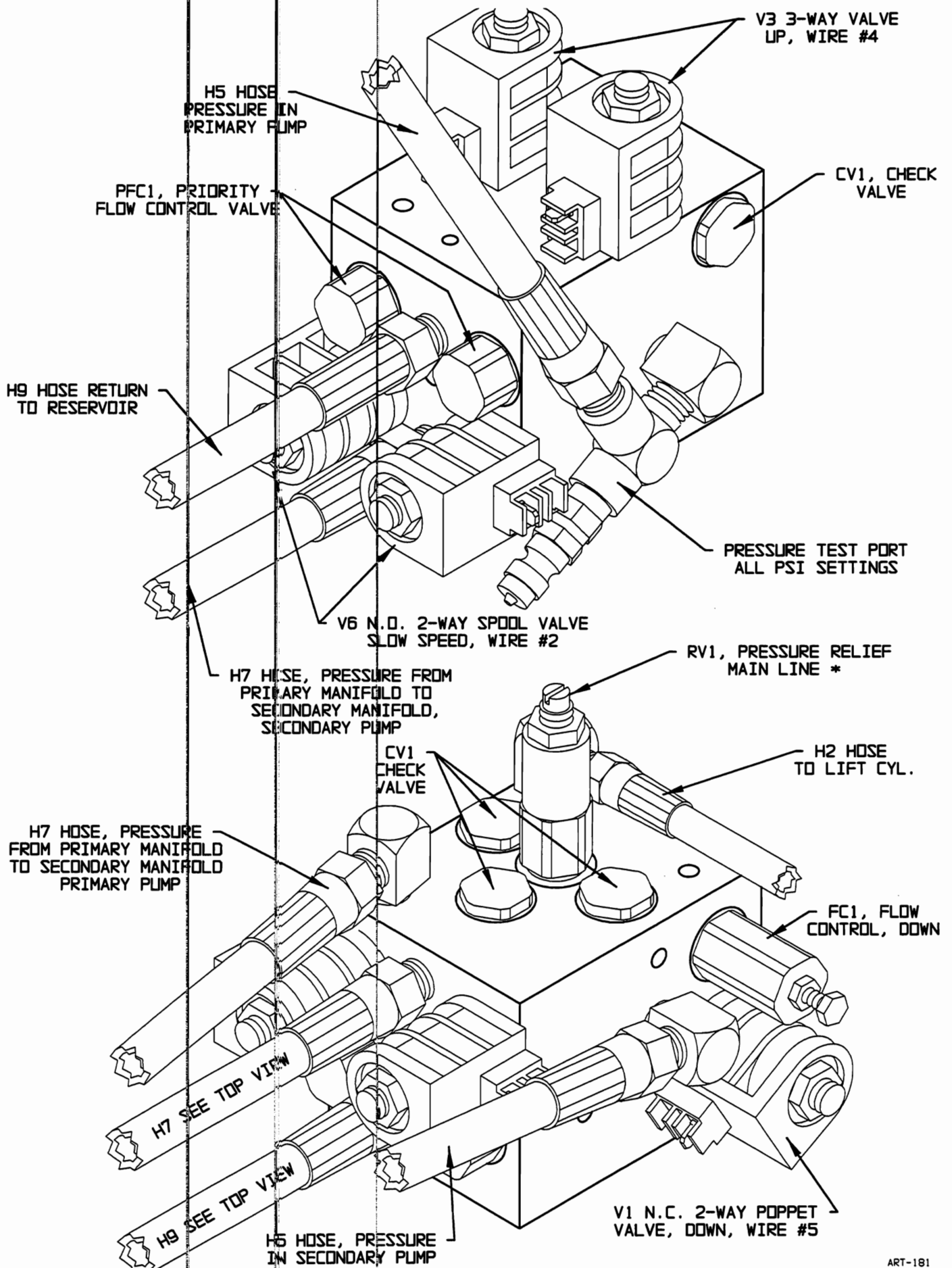
**FIG. 7-1 Standard Manifold Assembly**

**SYMBOL IDENTIFICATION FOR MANIFOLD  
HITEMASTER STANDARD SERIES**

Symbol	Quantity	Part Number	Description
V3	1	6976	3-Way 2 Position Valve
V5	1	5435	Manual Pull Valve
	@	6803	36v Coil
	Service	5475	O-Ring Kit
V6	3	6975	2-Way N.O. Valve
	@	6803	36v Coil
	Service	5475	O-Ring Kit

@ = 10 Coils Total

\*\* Refer To Hydraulic Schematic For Relief Valve Settings



**FIG. 7-2 High Torque Primary Manifold Assembly**

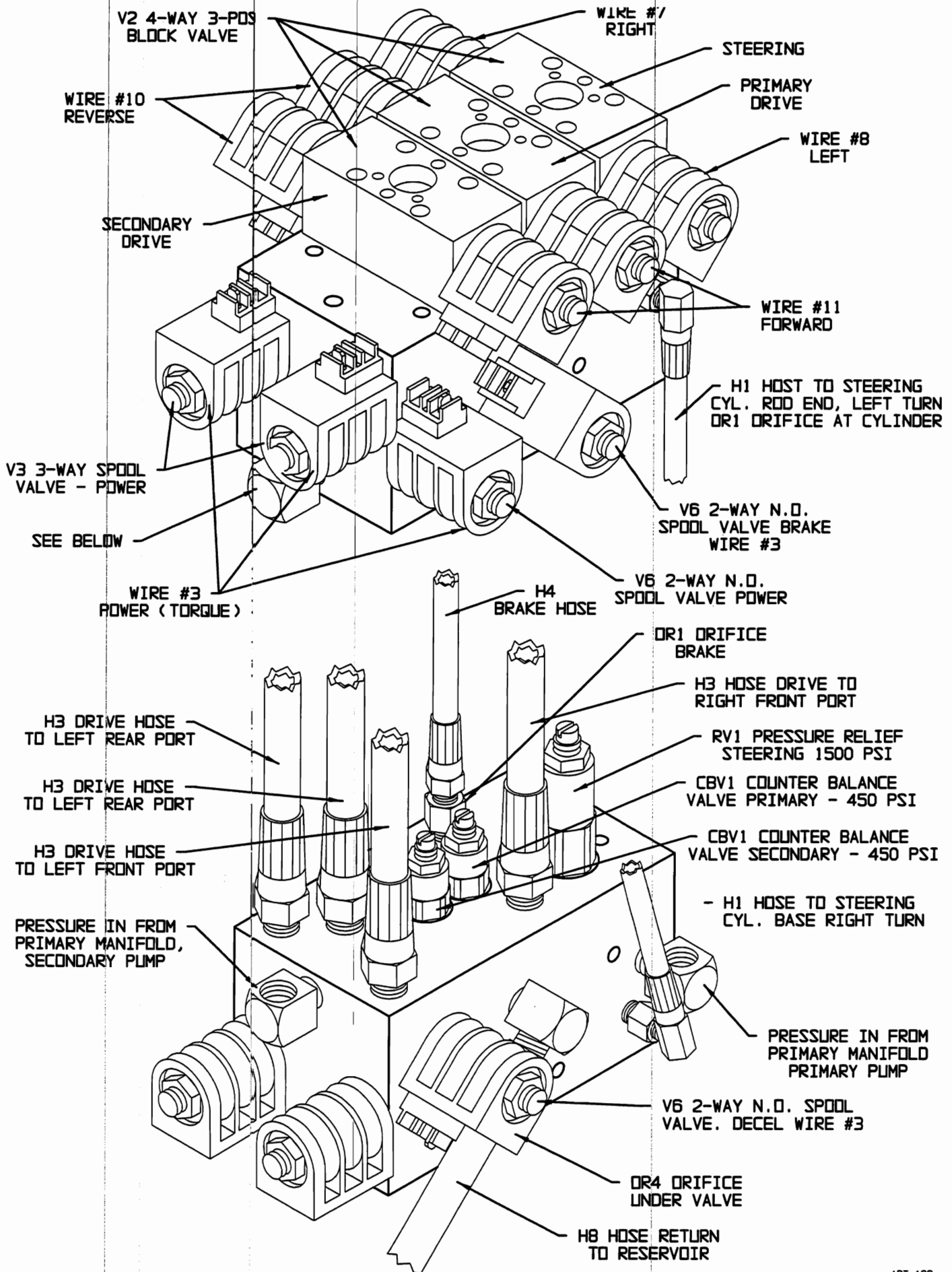


FIG. 7-3 High Torque Secondary Manifold Assembly

**SYMBOL IDENTIFICATION FOR MANIFOLD  
HITEMASTER HIGH TORQUE SERIES**

Symbol	Quantity	Part Number	Description
C1	1	3488	Lift Cylinder w/bearings
	Service	6790	Seal Kit
C2	2	2838	Steering Cylinder Assembly
	Service	2484	Cylinder Weldment
	Service	2493	Cylinder Head
	Service	2494	Piston
	Service	2837	Cylinder Rod
	Service	6337	Internal Retaining Ring
	Service	6338	Nut ½ - 20 Lock
	Service	5947	Seal Kit
	C3	1	2483
Service		2485	Cylinder Weldment
Service		2493	Cylinder Head
Service		2494	Piston
Service		2504	Cylinder Rod
Service		6337	Internal Retaining Ring
Service		6338	Nut ½ - 20 Lock
Service		5947	Seal Kit
CBV1		2	6712
	Service	6806	O-Ring Kit
CV1	4	5434	Check Valve
F1	1	6156	Filter
FC1	1	5963	Flow Control
	Service	5475	O-Ring Kit
H1	2	6718	Steering Hose
H2	1	6720	Lift Hose
H3	4	6721	Drive Hose
H4	1	6722	Brake Hose
H5	2	6723	Hose Pump to Manifold
H9	1	6225	Return Hose
H8	2	5995	Hose Filter to Pump
H11	5	6458	Return Line
H12	1	6869	Hose Tank to Filter
M1	2	6661	36v Motor
M5	2	6660P	Drive Motor
	Service	6814	Seal Kit
MA1	1	3595	Primary Manifold
MA4	1	3480	Secondary Manifold
O1	1	6107	Orifice Fitting Assembly
O4	1	2975	Orifice Fitting (brass)
P1	2	6662	Pump
PFC1	2	5954	Priority Flow Control 1.0 GPM (standard)
	Option	6189	Priority Flow Control .5 GPM (special)
	Service	5475	O-Ring Kit
RV1	2	6316	Relief Valve
	Service	5475	O-Ring Kit
V1	2	6973	2-Way N.C. Valve
	@	6803	36v Coil
	Service	5475	O-Ring Kit

**Primary & Secondary Manifold Assembly**

**SYMBOL IDENTIFICATION FOR MANIFOLD  
HITEMASTER HIGH TORQUE**

Symbol	Quantity	Part Number	Description
V <sub>2</sub>	3	7976	4-Way 3 Position Valve
	@	6803	36v Coil
	Service	6161	Spring and O-Ring Kit
V <sub>3</sub>	4	6976	3-Way 2 Position Valve
V <sub>5</sub>	1	5435	Manual Pull Valve
	@	6803	36v Coil
	Service	5475	O-Ring Kit
V <sub>6</sub>	5	6975	2-Way N.O. Valve
	@	6803	36v Coil
	Service	5475	O-Ring Kit

@ = 17 Coils Total

\*\* Refer To Hydraulic Schematic For Relief Valve Settings



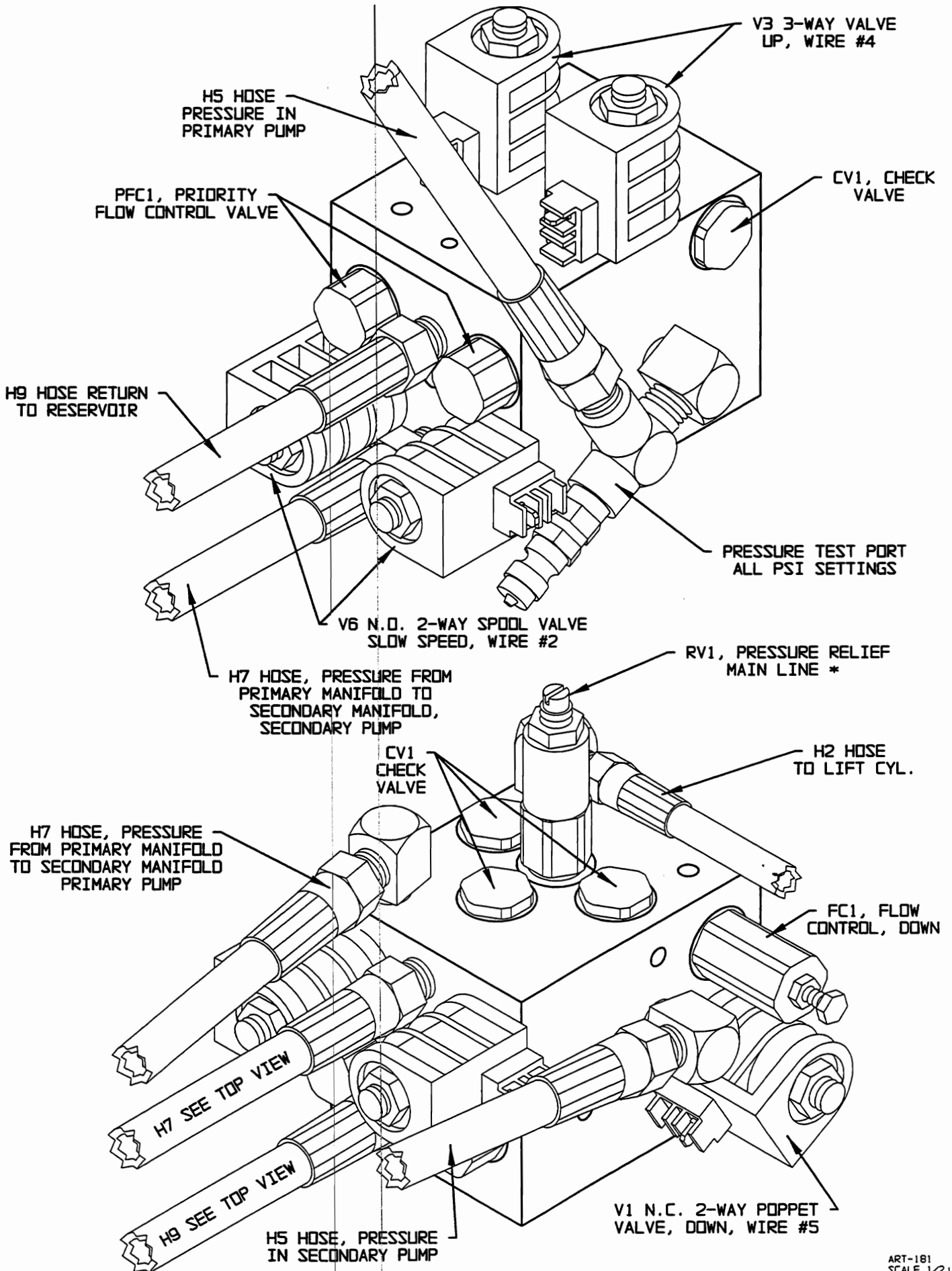


FIG. 7-4 Dual Fuel Primary Manifold Assembly

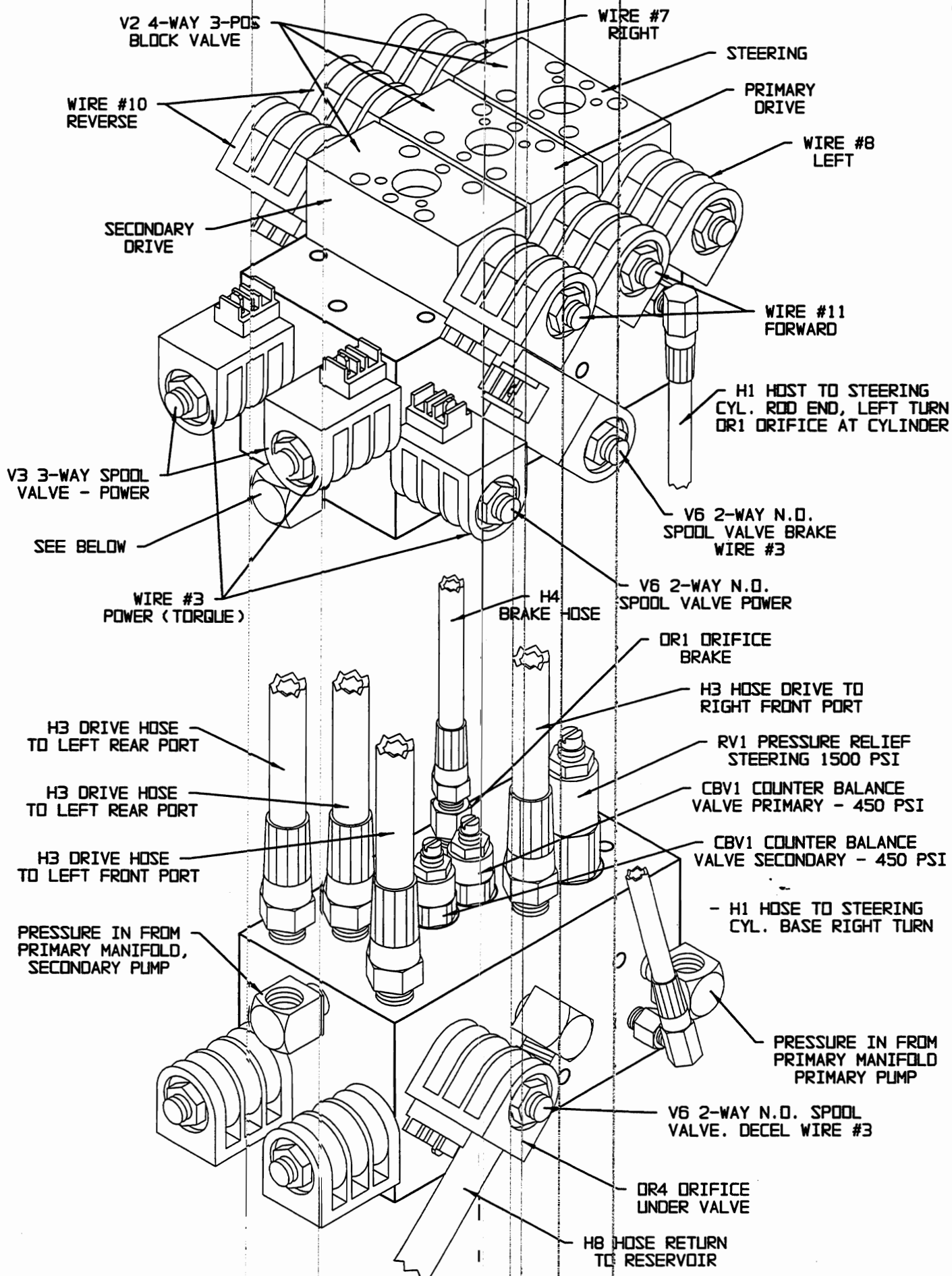


FIG. 7-5 Dual Fuel Secondary Manifold Assembly

**SYMBOL IDENTIFICATION FOR MANIFOLD  
HITEMASTER DUAL FUEL SERIES**

Symbol	Quantity	Part Number	Description
C1	1	3488	Lift Cylinder w/bearings
	Service	6790	Seal Kit
C2	2	2838	Steering Cylinder Assembly
	Service	2484	Cylinder Barrel Weldment
	Service	2493	Cylinder Head
	Service	2494	Piston
	Service	2837	Cylinder Rod
	Service	6338	Nut ½ - 20 Lock
	Service	6337	Internal Retaining Ring
	Service	5947	Seal Kit
	C3	1	2483
Service		2485	Cylinder Barrel Weldment
Service		2493	Cylinder Head
Service		2494	Piston
Service		2505	Cylinder Rod
Service		6337	Internal Retaining Ring
Service		6338	Nut ½ - 20 Lock
Service		5947	Seal Kit
CBV1		2	6712
	Service	6806	O-Ring Kit
CV1	4	5434	Check Valve
	Service	5475	O-Ring Kit
F1	1	6156	Filter
FC1	1	5963	Flow Control
	Service	5475	O-Ring Kit
H1	2	6718	Steering Hose
H2	1	6720	Lift Hose
H3	4	6721	Drive Hose
H4	1	6722	Brake Hose
H5	2	6723	Hose Pump to Bypass Manifold
H7	2	5999	Hose Primary to Secondary
H8	2	6225	Hose Return to Tank
H9	1	5995	Hose
H10	2	6237	Hose Bypass to Primary Manifold
H11	4	6429	Hose Secondary to Crossover Manifold
M1	1	6853	Kohler M18 Engine
M4	2	6660P	Wheel Motor
MA1	1	3595	Primary Manifold
MA2	1	3609	Crossover Manifold
MA4	1	3480	Secondary Manifold
MA5	1	4336	Bypass Manifold
O1	1	7044	Orifice Fitting
O4	1	2975	Orifice (brass)
P1	1	6855	Pump
PFC1	2	5954	Priority Flow Control (1.0 GPM)
	Option	6189	Priority Flow Control (.5 GPM)
	Service	5476	O-Ring Kit
RV1	2	6316	Relief Valve
	Service	5475	O-Ring Kit

**Dual Fuel Primary & Secondary Manifold**

**SYMBOL IDENTIFICATION FOR MANIFOLD  
HITEMASTER DUAL FUEL SERIES**

Symbol	Quantity	Part Number	Description
V1	2	6973	2-Way N.C. Valve
	@	6870	12v Coil
	Service	5475	O-Ring Kit
V2	3	7976	4-Way 3-Position Valve
	@	6870	12v Coil
	Service	6161	Spring & O-Ring Kit
V3	4	6976	3-Way 2-Position Valve
	@	6870	12v Coil
	Service	5476	O-Ring Kit
V5	1	5435	Manual Pull Valve
	Service	5475	O-Ring Kit
V6	5	6975	2-Way N.O. Valve
	@	6870	12v Coil
	Service	5475	O-Ring Kit
V7	2	7151	2-Way N.C. Spool Valve
	@	6870	12v Coil
	Service	5475	O-Ring Kit

@ = 17 Coils Total

\*\* Refer To Hydraulic Schematic For Relief Valve Setting

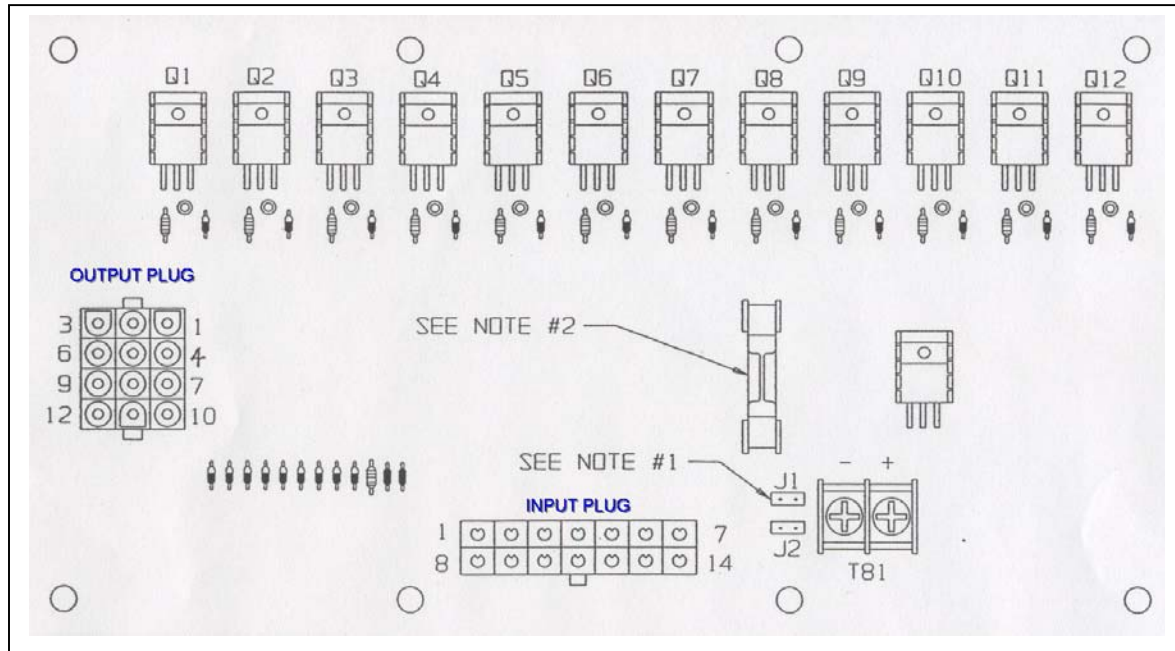


Aerial Work Platforms

## 9021 Relay Board (new style)

When replacing (p/n 9021) circuit board on **Quadrex 25/33 RT** series or **3072** series or **2558DF** (Kawasaki eng), it will be necessary to pull jumper J1 (note 1 on diagram). Jumper J1 programs the throttle and choke control circuits. Leave jumper in place for **2558D** w/Kohler engine only.

**NOTE:** J1 is very small, use needle-nosed pliers to pull it from the board.



For diagnostic purposes, the chart below lists the input and output terminals, and LED for the respective function. Match the column on the chart with your specific model.

INPUT	LED	OUTPUT	FUNCTION 25, 33 RT	FUNCTION 25,33 SRT	FUNCTION 3072	FUNCTION 2558D	FUNCTION 2558DF
1	1	1	Up	Not used	Up to 9200486 - Start From 9200487- Not used	Not used	Not used
2	2	2	Down	Slow Speed	Slow	Slow	Slow
3	3	3	Bypass – Decel	Brake - Decel	Decel – Pri. Dump	Brake – Decel	Brake – Decel
4	4	4	Torque	Up	Up	Up	Up
5	5	5	Throttle	Not used	Throttle	Not used	Throttle
6	6	6	Choke Pre-heat (diesel)	Throttle	Choke Pre-heat (diesel)	Throttle	Choke
7	7	7	Forward	Right	Right	Right	Right
8	8	8	Reverse	Left	Left	Left	Left
9	9	9	Steer Left	Sec. Dump	Sec. Dump	Sec. Dump	Sec. Dump
10	10	10	Steer Right	Reverse	Reverse	Reverse	Reverse
11	11	11	Steer Bypass	Forward	Forward	Forward	Forward
12	12	12	A.C. Generator (opt)	Torque	Torque	Torque	Torque