

3068ES ELECTRICAL SCHEMATIC

SERIAL NUMBER #8900101 - #PRESENT

o/o N/C

o/o N/C HELD OPEN

o/o N/D

o/o N/D HELD CLOSED

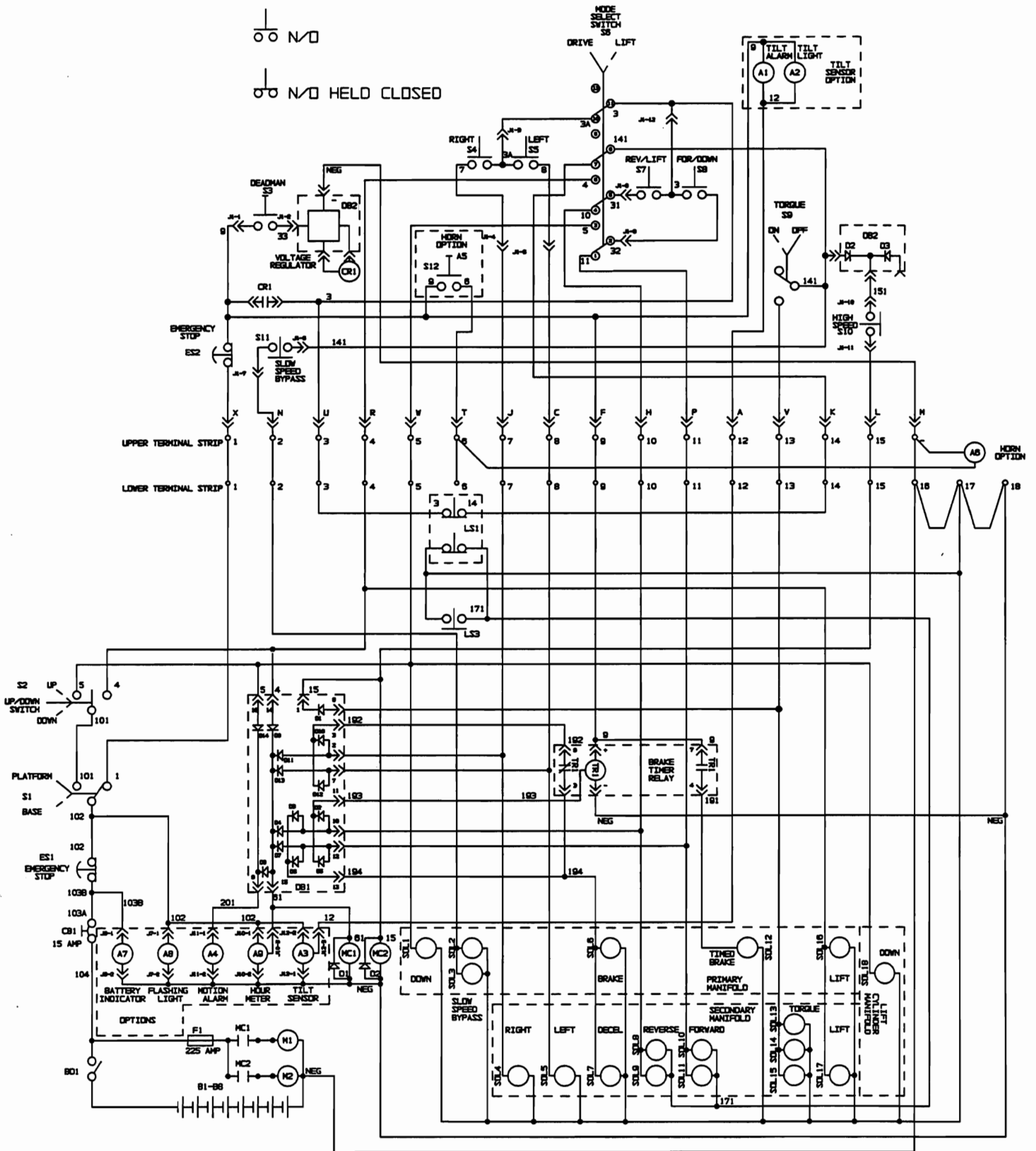


Figure 2-1. 3068ES Electrical Schematic

ART800 R2
 BH13217
 7/14/97

8821R1

ITEM	PART NO.	QTY.	DESCRIPTION	FUNCTION	LOCATION
A1-A3	14579	1	TILT SENSOR OPTION PACKAGE	WARN WHEN MACHINE IS AT 4 DEG.	IN HYDRO/ELEC CAB. & IN CONTROL BOX
A5-A6	XXXX	1	PLATFORM MOUNTED HORN PACKAGE	OPERATOR ACTIVATED HORN	CONTROL BOX AND UNDER PLATFORM
A7	14580	1	BATTERY INDICATOR PACKAGE	SHOW BATTERY STATUS	LOWER CONTROL PANEL
A8	14577	1	FLASHING LIGHT PACKAGE	WARN OF A POWERED UP MACHINE	FRONT OF BATTERY CABINET
A9	14581	1	HOUR METER PACKAGE	RECORD TIME THAT IS MACHINE IS BEING USED	LOWER CONTROL PANEL
A4	14582	1	MOTION ALARM PACKAGE	WARNING OF MOVEMENT	LOWER CONTROL PANEL
B1-B8	5970	8	6 VOLT DEEP CYCLE BATTERY	POWER FOR THE MOTOR AND CONTROL CIRCUIT	INSIDE BATTERY COMPARTMENT
BD1	8841	1	MASTER DISCONNECT SWITCH	DISCONNECT POWER TO ALL CIRCUITS	FRONT OF HYDRO / ELEC CABINET
CB1	7235	1	CIRCUIT BREAKER - 15 AMP MANUAL	CONTROL CIRCUIT PROTECTION	LOWER CONTROL PANEL
CR1	7835	1	24 VOLT RELAY	CLOSE THE CONTROL CIRCUIT	INSIDE UPPER CONTROL BOX
DB1	8882	1	DIODE BOARD	DIRECT SIGNAL TO PROPER FUNCTION	INSIDE HYDRO / ELEC. CABINET
DB2	8912	1	DIODE BOARD AND VOLTAGE REGULATOR	DIRECT SIGNALS AND REGULATE VOLTAGE FOR RELAY	INSIDED UPPER CONTROL BOX
D1	8368	1	DIODE W/ RING TERMINALS	SUPRESTION DIODE	ACROSS PRIMARY CONTACTOR
D2	8368	1	DIODE W/ RING TERMINALS	SUPRESTION DIODE	ACROSS SECONDARY CONTACTOR
ES1	7800	1	EMERGENCY STOP SWITCH	SHUT DOWN ALL MOVING FUCTIONS	LOWER CONTROL PANEL
ES2	7800	1	EMERGENCY STOP SWITCH	SHUT DOWN ALL MOVING FUCTIONS AT PLATFORM	UPPER CONTROL BOX
F1	7784	1	225 AMP FUSE	MAIN LINE FUSE	INSIDE HYDD / ELEC. CABINET
LS1	8932	1	LIMIT SWITCH	HIGH SPEED ENABLE/DRIVE ENABLE SWITCH	REAR BEAM ATTACHMENT
LS3	8776	1	LIMIT SWITCH	DRIVE ENABLE POTTHOLE LOCATION SWITCH	REAR OF POTTHOLE SYSTEM
M1	8853	1	48 VOLT MOTOR	PRIMARY MOTOR	INSIDE HYDD / ELEC. CABINET
M2	8853	1	48 VOLT MOTOR	SECONDARY MOTOR	INSIDE HYDD / ELEC. CABINET
MC1	7688	1	48 VOLT MOTOR CONTACTOR	PRIMARY MOTOR CONTACTOR	INSIDE HYDD / ELEC. CABINET
MC2	7688	1	48 VOLT MOTOR CONTACTOR	SECONDARY MOTOR CONTACTOR	INSIDE HYDD / ELEC. CABINET
S1	7423	1	SINGLE POLE TWO POSITION SWITCH	SELECT BASE OR PLATFORM OPERATION	LOWER CONTROL PANEL
S2	5230	1	SINGLE POLE THREE POS. SWITCH	LIFT CONTROL AT BASE CONTROLS	LOWER CONTROL PANEL
S3	8753	1	PUSH BUTTON SWITCH	ENABLES OTHER FUNCTIONS TO BE USED AT PLAT.	INSIDE HANDLE ASSEMBLY
S4	8448	1	V3 LIMIT SWITCH	RIGHT TURN SWITCH	INSIDE HANDLE ASSEMBLY
S5	8448	1	V3 LIMIT SWITCH	LEFT TURN SWITCH	INSIDE HANDLE ASSEMBLY
S6	8638	1	4 POLE 2 POS. TOGGLE SWITCH	MODE SELECT SWITCH	UPPER CONTROL BOX
S7	8696	1	V7 LIMIT SWITCH	REVERSE DR LIFT SWITCH	INSIDE UPPER CONTROL BOX
S8	8696	1	V7 LIMIT SWITCH	FORWARD DR DOWN SWITCH	INSIDE UPPER CONTROL BOX
S9	5630	1	SINGLE POLE 2 POS. TOGGLE SWITCH	TORQUE SWITCH	UPPER CONTROL BOX
S10	8696	1	V7 LIMIT SWITCH	HIGH SPEED DR FAST UP SWITCH	INSIDE UPPER CONTROL BOX
S11	8696	1	V7 LIMIT SWITCH	SLOW SPEED BYPASS SWITCH	INSIDE UPPER CONTROL BOX
S12	8044	1	PUSH BUTTON LIMIT SWITCH	HORN SWITCH	UPPER CONTROL BOX
SOL1	8840	1	48 VOLT COIL 2 SPADE W/ DIODE	ACTIVATES DOWN VALVE	PRIMARY MANIFOLD
SOL2,3	8840	2	48 VOLT COIL 2 SPADE W/ DIODE	ACTIVATES SLOW SPEED VALVES	PRIMARY MANIFOLD
SOL4	8840	1	48 VOLT COIL 2 SPADE W/ DIODE	ACTIVATES RIGHT VALVES	SECONDARY MANIFOLD
SOL5	8840	1	48 VOLT COIL 2 SPADE W/ DIODE	ACTIVATES LEFT VALVES	SECONDARY MANIFOLD
SOL6	8840	1	48 VOLT COIL 2 SPADE W/ DIODE	ACTIVATES BRAKE VALVE	PRIMARY MANIFOLD
SOL7	8840	1	48 VOLT COIL 2 SPADE W/ DIODE	ACTIVATES DECEL VALVE	SECONDARY MANIFOLD
SOL8,9	8840	2	48 VOLT COIL 2 SPADE W/ DIODE	ACTIVATES REVERSE VALVES	SECONDARY MANIFOLD
SOL10,11	8840	2	48 VOLT COIL 2 SPADE W/ DIODE	ACTIVATES FORWARD VALVES	SECONDARY MANIFOLD
SOL12	8840	1	48 VOLT COIL 2 SPADE W/ DIODE	ACTIVATES TIMED BRAKE VALVE	PRIMARY MANIFOLD
SOL13-15	8840	3	48 VOLT COIL 2 SPADE W/ DIODE	ACTIVATES TORQUE VALVES	SECONDARY MANIFOLD
SOL16	8840	1	48 VOLT COIL 2 SPADE W/ DIODE	ACTIVATES LIFT VALVE	PRIMARY MANIFOLD
SOL17	8840	1	48 VOLT COIL 2 SPADE W/ DIODE	ACTIVATES LIFT VALVE	SECONDARY MANIFOLD
SOL18	8840	1	48 VOLT COIL 2 SPADE W/ DIODE	ACTIVATES DOWN VALVE	LIFT CYLINDER MANIFOLD
TR1	8842	1	48 VOLT TIME DELAY	ACTIVATES THE BRAKE VALVES	INSIDE HYDRO / ELEC. CABINET
WIRE HARNESS ASSEMBLIES AND CABLES					
	8859		COVER ASSEMBLY WIRE HARNESS		
	8862		CONTROL BOX ASSEMBLY WIRE HARNESS		
	8903		3068 MAIN WIRE HARNESS ASSEMBLY		
	8904		16 GA 16 COND. CABLE ASSEMBY		
	8915		UPPER CONTROL CORD CABLE ASSEMBLY		
	8921		DOWN CABLE ASSEMBLY		
	8924		CHARGER HARNESS ASSEMBLY		

ATTEND NO
8813017
7/14/88

Figure 2-1. 3068ES Electrical Schematic

8821R1

3068ES HYD. PRESSURES

COUNTER BALANCE VALVE

WITH DRIVE COILS UNPLUGGED

joystick in 2nd position, medium speed

450psi

FRONT END OF UNIT JACKED UP

no load drive joystick in 1st position

450psi

joystick in 2nd position

650psi

joystick in 3rd position

1200psi

DRIVE PRESSURES & SPEEDS

UNIT DRIVING ON FLAT, SMOOTH CONCRETE

joystick in 1st position

550psi

17sec/20ft.

joystick in 2nd position

1100psi

7sec/20ft.

joystick in 3rd position

1750psi

4.5sec/20ft.

TORQUE ON

joystick in 1st position

500psi

10sec/20ft.

joystick in 2nd position

1100psi

7sec/20ft.

joystick in 3rd position

N/A

LIFT PRESSURES

UNIT LIFTING WITH NO LOAD ON PLATFORM

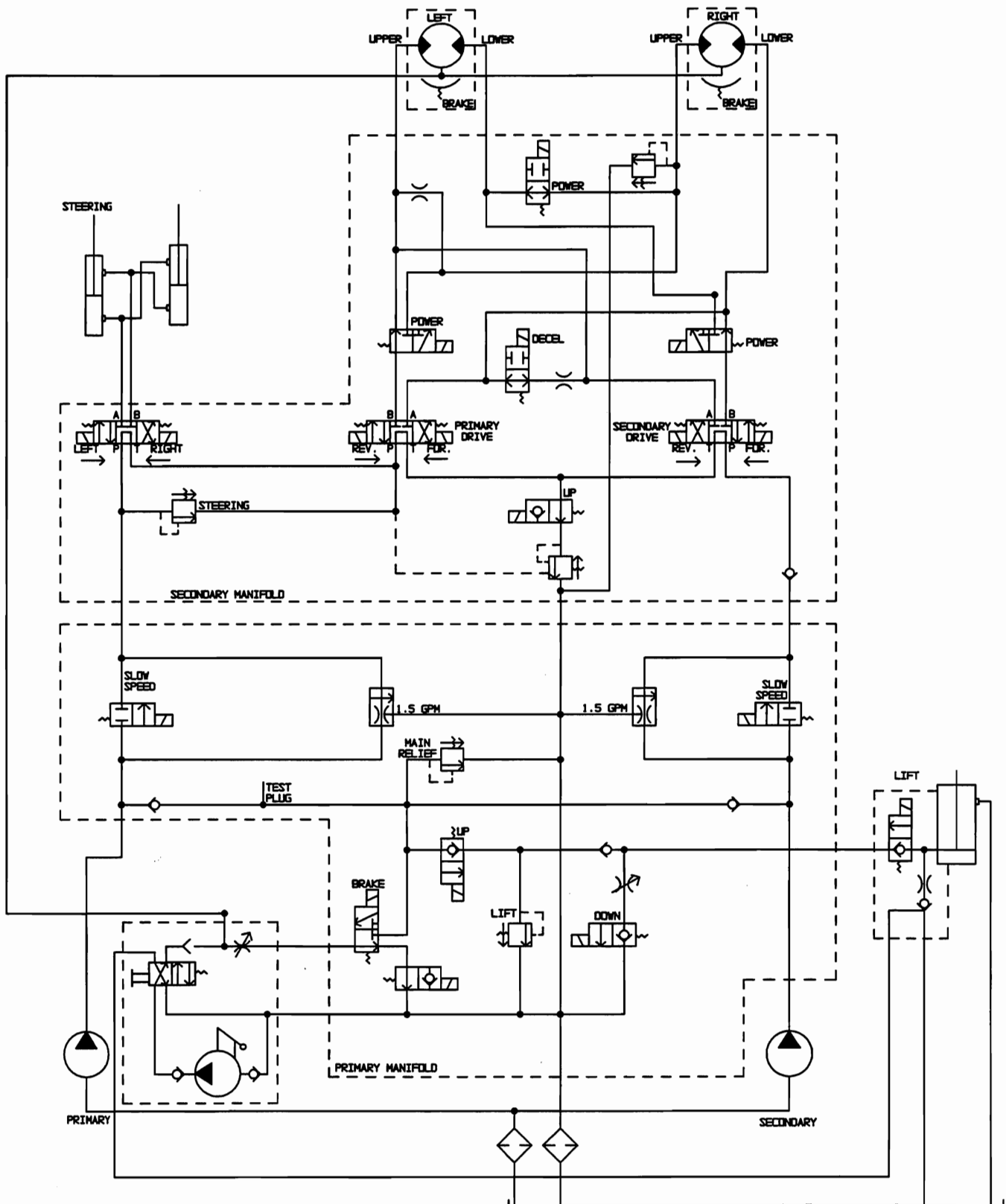
from the base switch

1500psi

STEERING PRESSURES

UNIT NOT MOVING ON FLAT CONCRETE FLOOR

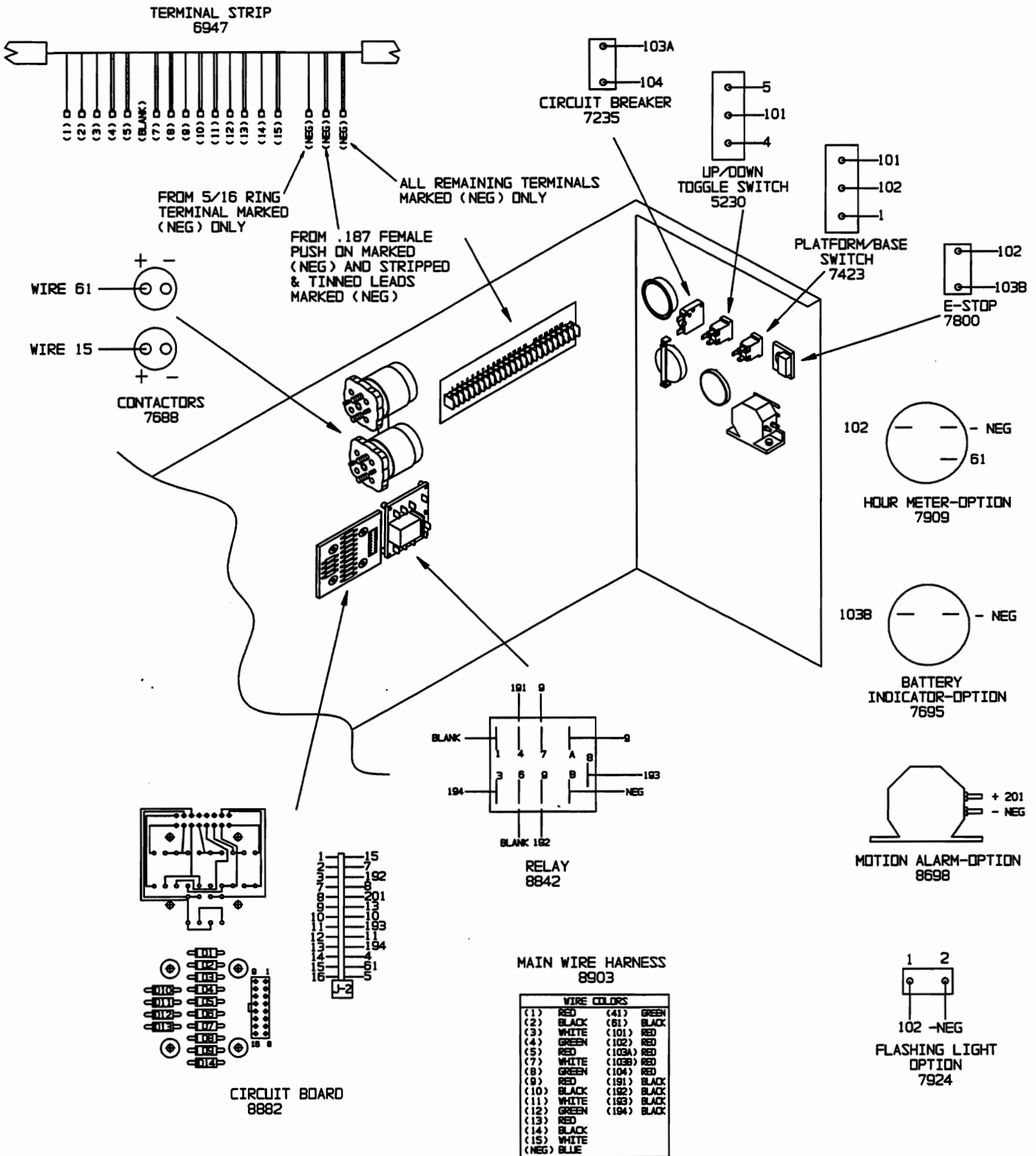
500-1000psi



PRESSURE SETTINGS	
MAIN RELIEF	2500 PSI
LIFT	2200 PSI
STEERING	1200 PSI
EMERGENCY DOWN	360 PSI (NON ADJUSTABLE)
BRAKE RELEASE	360 PSI (NON ADJUSTABLE)

ART602 R2
 BH13272
 7/1/87

Figure 2-2. 3068ES Hydraulic Schematic

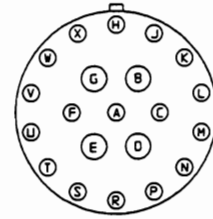


ART615 R1
BM13711
7/15/97

Figure 2-3. 3068ES Base Control - Electrical

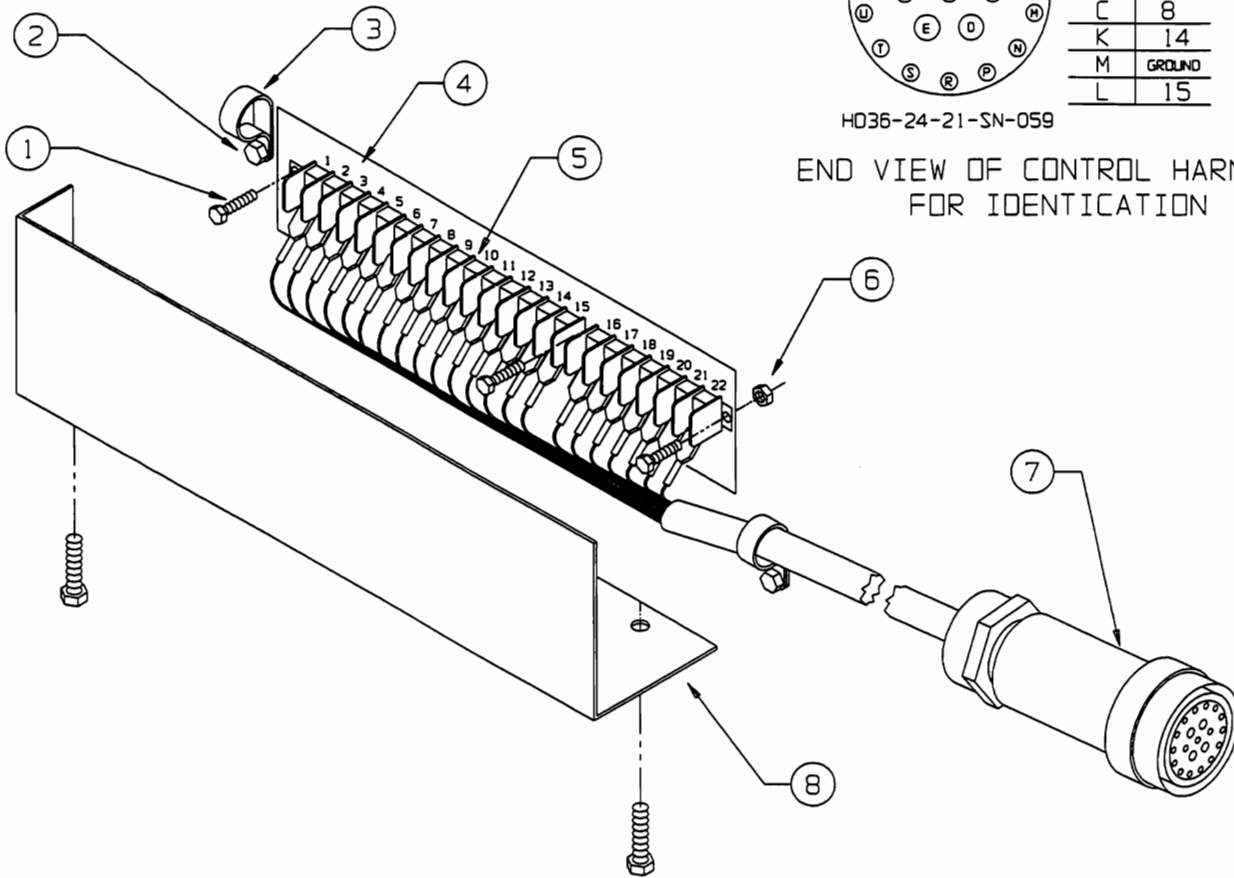
8821R1

HOLE #	WIRE #
X	1
F	9
W	5
R	4
V	13
A	12
H	10
P	11
U	3
T	6
J	7
N	2
C	8
K	14
M	GROUND
L	15



HD36-24-21-SN-059

END VIEW OF CONTROL HARNESS
FOR IDENTIFICATION



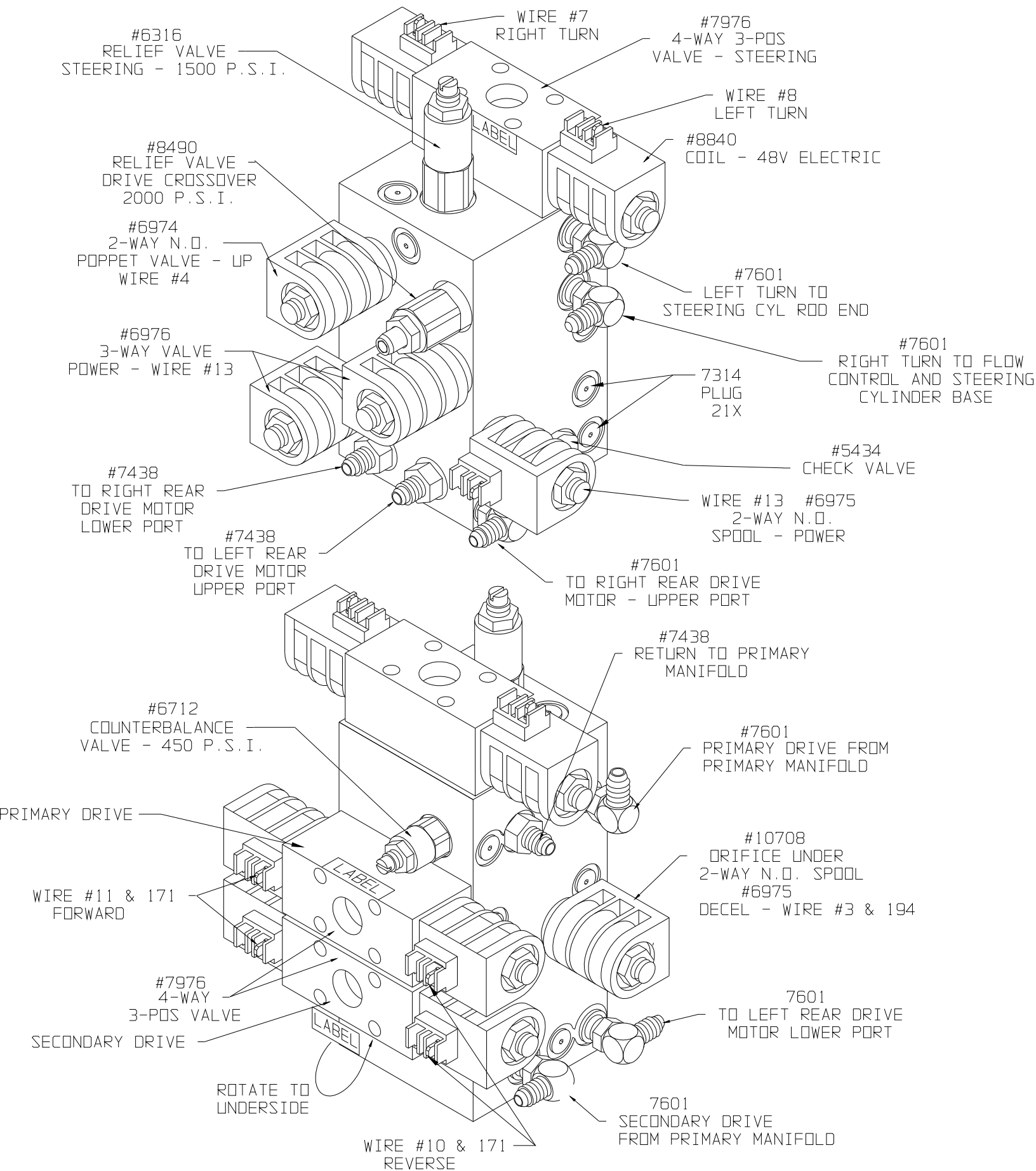
ITEM	PART NO.	QTY.	DESCRIPTION
1	HDW5363	3	SCREW, 6-32, 1" LONG
2	HDW6455	4	SCREW, 1/4"-20, 1/2" LONG
3	HDW5882	2	CABLE CLAMP
4	7970	1	TERMINAL STRIP MARKER
5	6947	1	TERMINAL STRIP
6	HDW5364	3	NUT, 6-32
7	8915	1	WIRE HARNESS, UPPER CONTROL BOX
8	14604	1	TERMINAL STRIP COVER
	8844	2	GROMMET-CORD PROTECTOR, (PROTECTS CONTROL BOX WIRE HARNESS THROUGH PLATFORM, NOT SHOWN)
	5863	1	GROMMET- CABLE PROTECTOR, (PROTECTS CONDUIT FOR OPTIONAL OUTLET ON PLATFORM, NOT SHOWN)

ART618 R1
BM13811
7/25/97

Figure 2-4. 3068ES Platform Terminal Box

8821R1

SECONDARY MANIFOLD IDENTIFICATION AND PARTS BREAKDOWN
SEE NOTES FOR MODELS & SERIAL NUMBERS
ASSEMBLY # 14403



PRIMARY MANIFOLD IDENTIFICATION AND PARTS BREAKDOWN
ASSEMBLY #14402

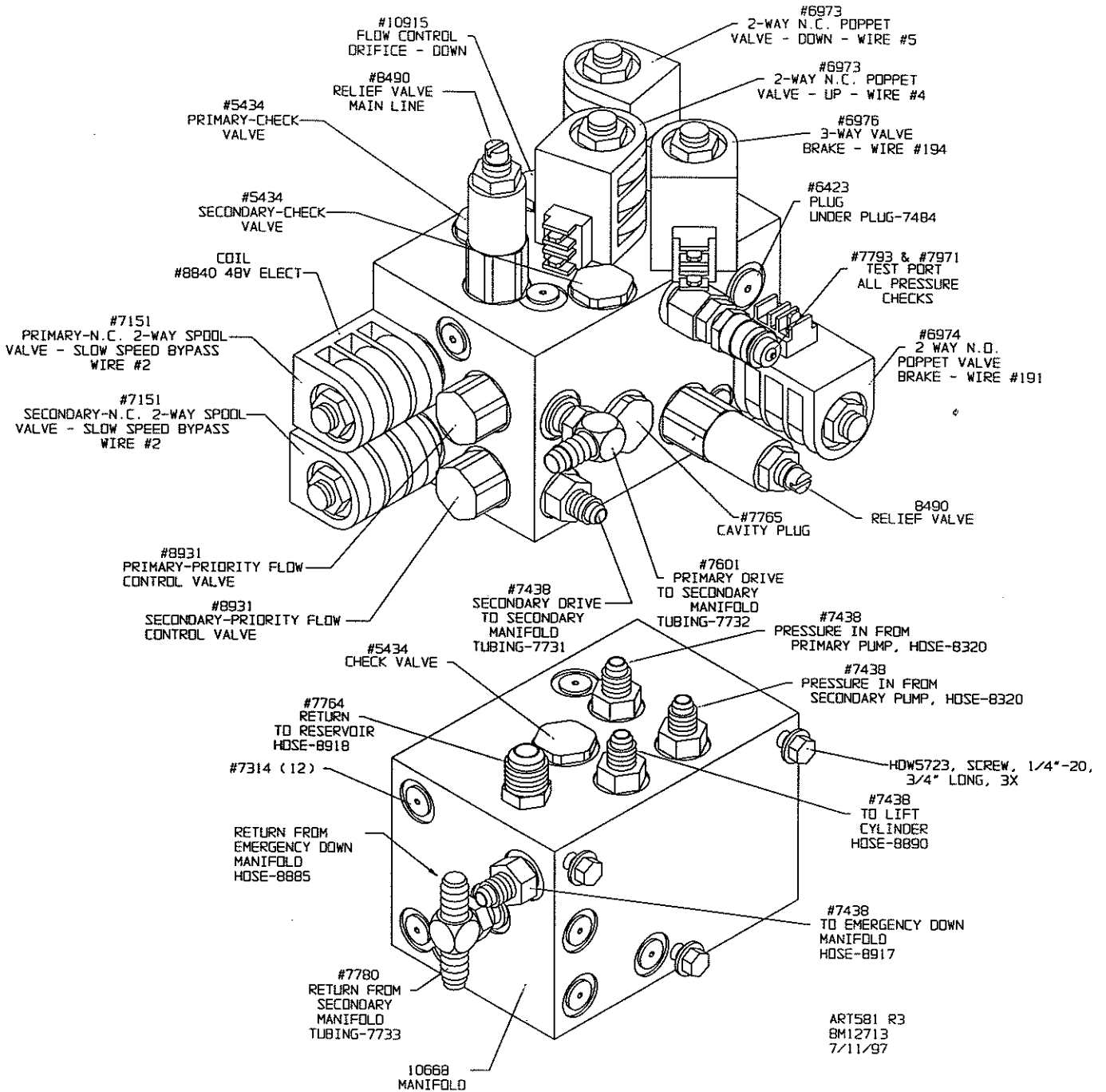


Figure 8-1. 3068ES Primary Manifold Assembly