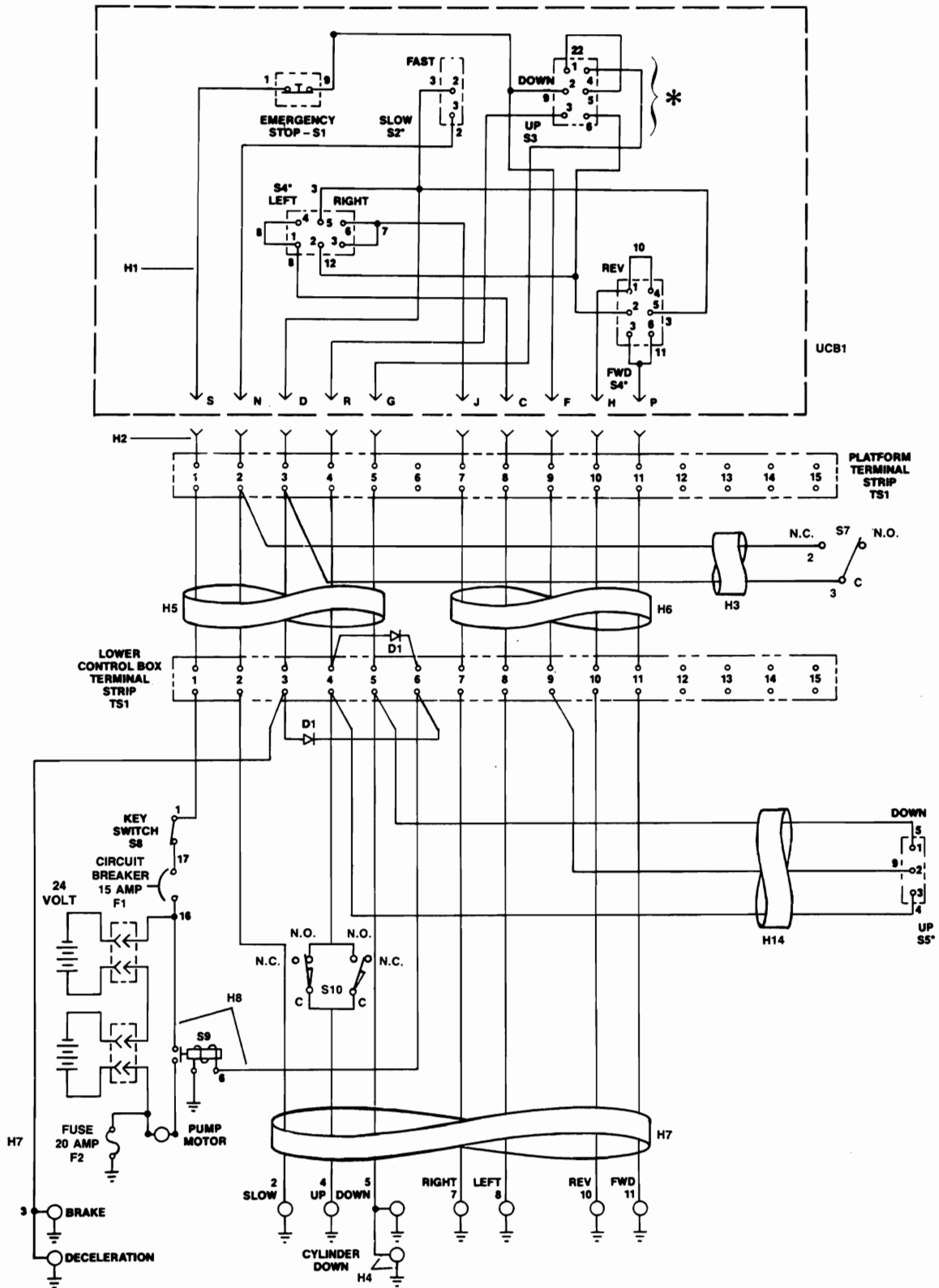


ELECTRICAL WIRING DIAGRAM
macDYNA-MITE Models 1332 & 1632



★ NOTE: Switch wiring as seen from the rear of switch.

Up/Down Switch at Upper Control Box - Contacts Made With Toggle at Keyway Position 1-2, 4-5 - Center Position 1-2, 5-6 - Opposite Keyway 2-3, 5-6

Figure 21. Electrical Wiring Diagram.

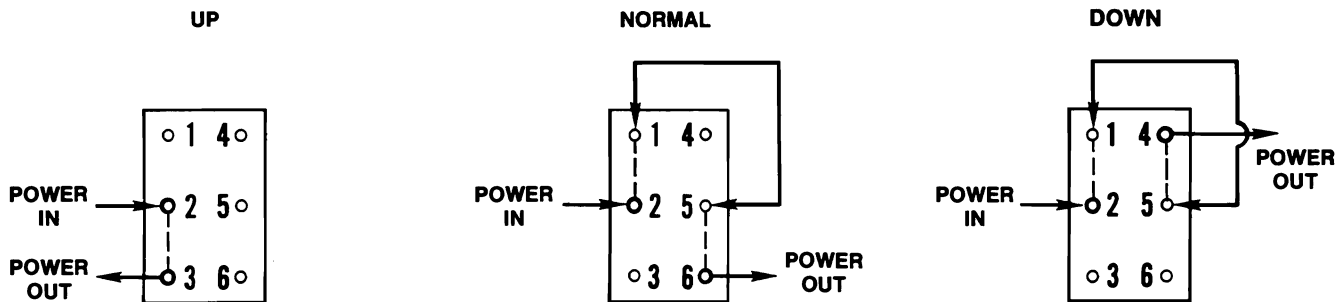
Symbol Identification for Figure 21.
McC DYNA-MITE Models 1332 & 1632

Qty.	Symbol	Description	Part No.
2	D1	Diode Assembly	6070
1	F1	Circuit Breaker, 15 Amp	7235
1	F2	Fuse, 20 Amp	7275
	H1	Harness, Control Box	6828
1	H2	Harness, To Control Box	5983
1	H3	Harness, Slow Speed & Stab.	7269
1	H4	Harness, Down Valve	7268
	H5	Harness, Nos. 1, 2, 3, 4, 5	
1		Model 1332	7225
1		Model 1632	7267
	H6	Harness, Nos. 7, 8, 9, 10, 11	
1		Model 1332	7266
1		Model 1632	7226
1	H7	Harness, Component Tray	6805
1	H8	Harness, Crossover, #6, 16	7243
1	H14	Harness, Component Tray	7244
1	S1	Switch, Emergency Stop	7800

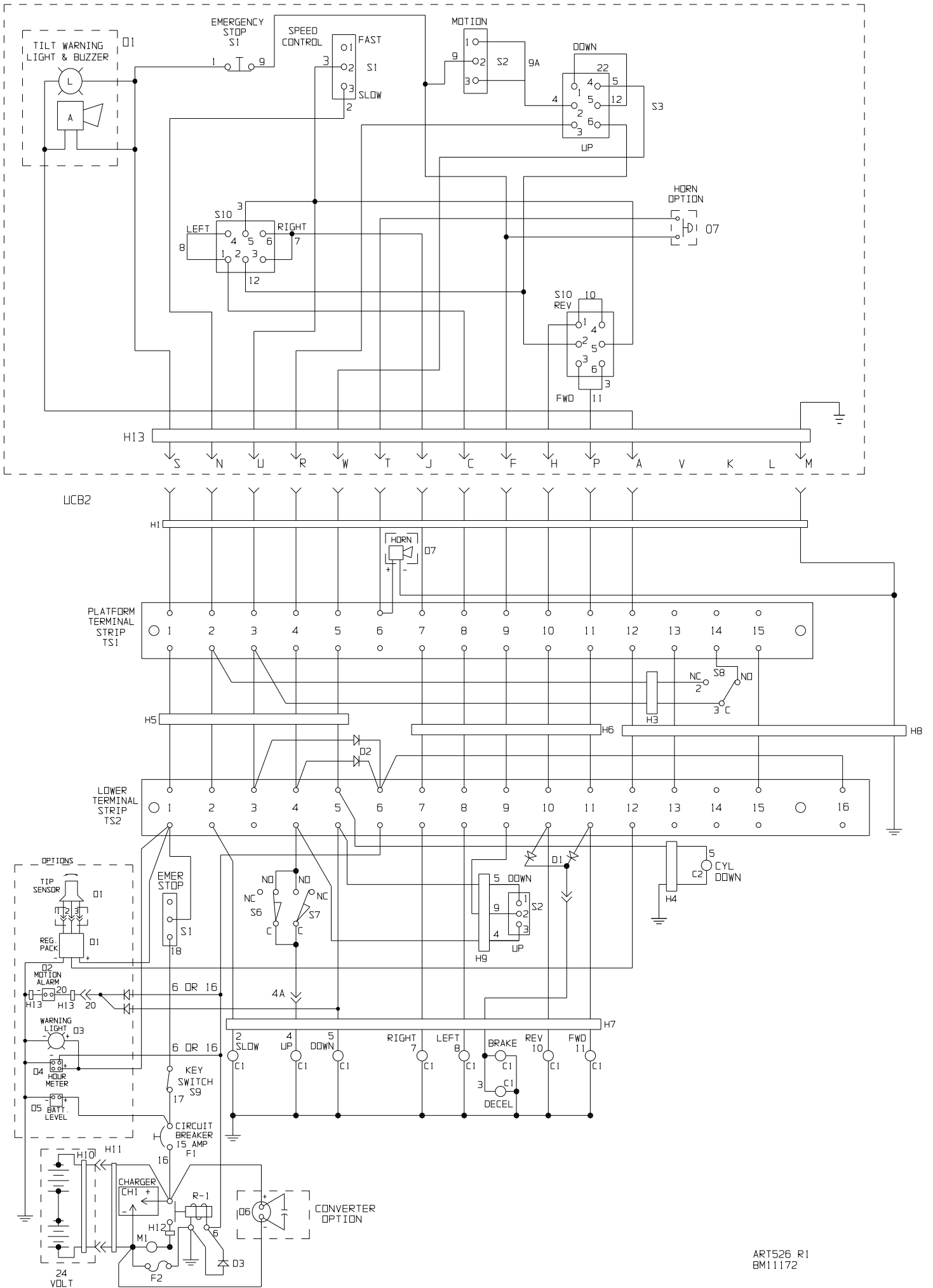
Qty.	Symbol	Description	Part No.
1	S2	Switch, Slow/Fast	5630
1	S3	Switch, Up/Down	5979
2	S4	Switch, Steering, Fwd./Rev.	5694
1	S5	Switch, Lower, Up/Down	5230
1	S7	Switch, Slow Sp. Limit	6715
1	S8	Switch, Key	5936
Ser.		Key Only	6117
1	S9	Contactor, Motor Start	5967
	S10	Switch Limit Stabilizers	
1		Top - Outer	7647
1		Bottom - Inner	5369
2	TS1	Terminal Strip	5991
1	UCB1	Upper Control Box	2107

Ser. = Service Usage

★ S3 - Up Switch Diagram

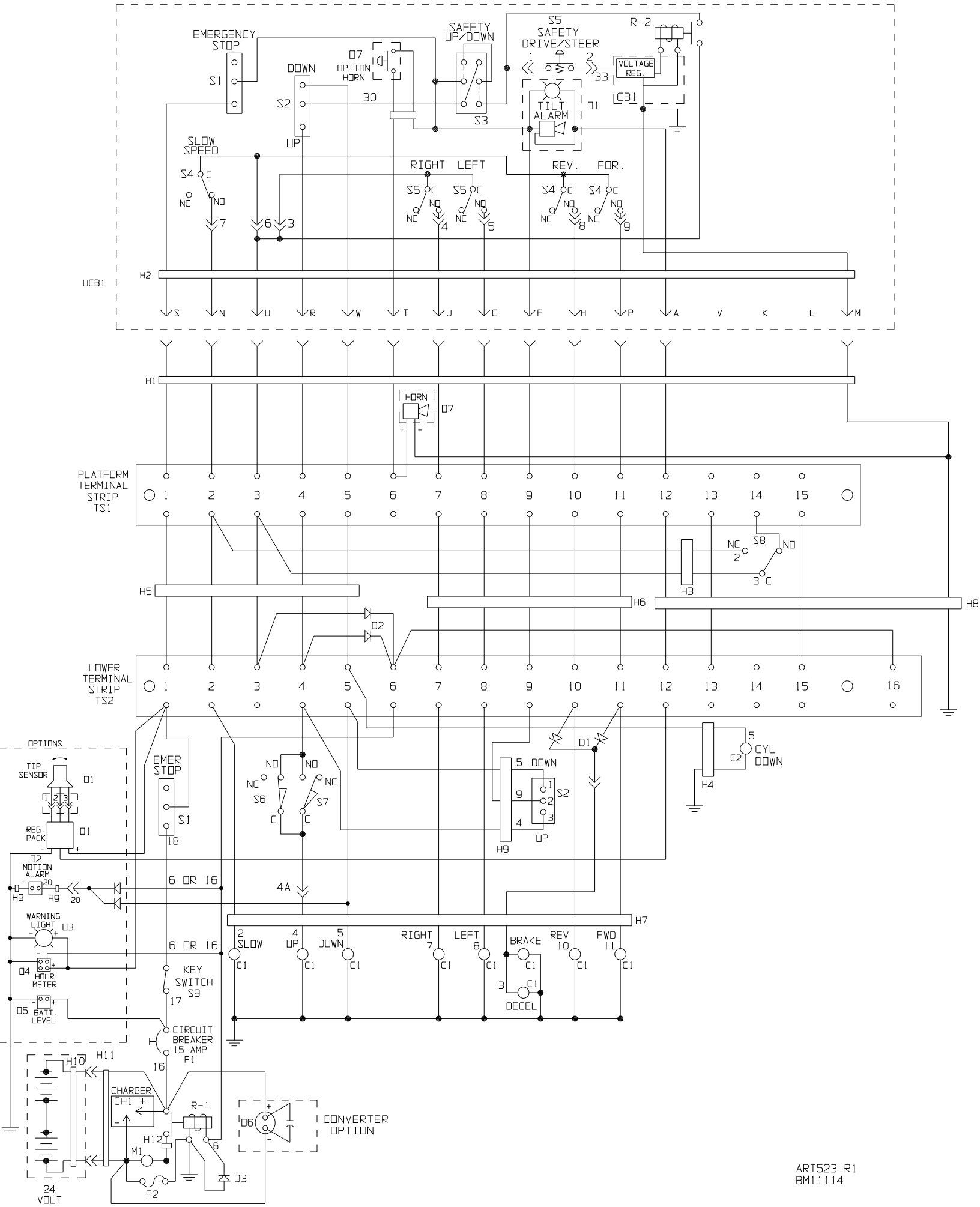


ELECTRICAL WIRING DIAGRAM FOR ALL
 DYNA-MITE MODELS 1332 & 1632
 WITH A TOGGLE CONTROL BOX
 1992 AND LATER MODELS



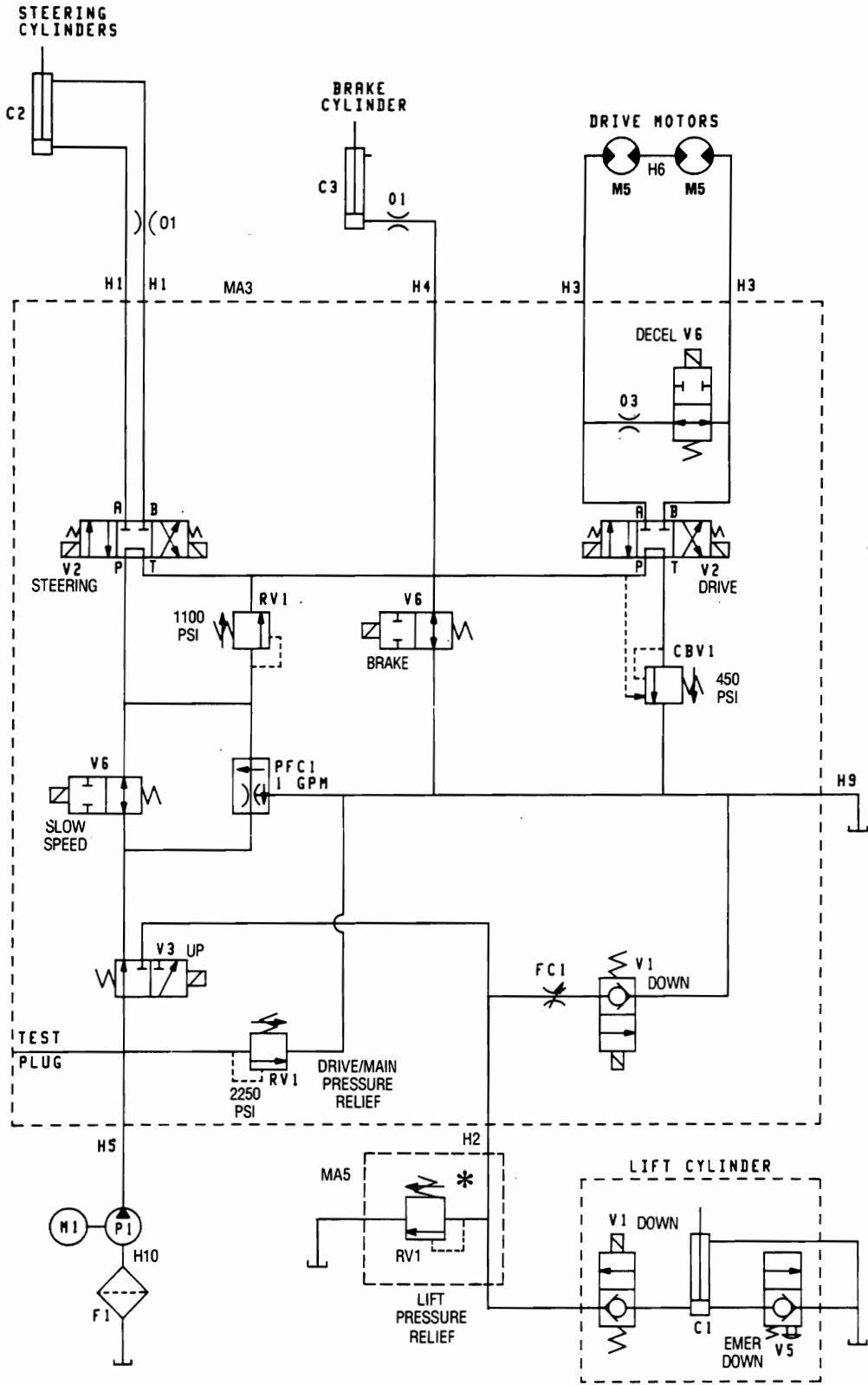
ITEM	PART NO.	QTY.	DESCRIPTION
C1	6163	9	COIL ONLY 24 VDC
C2	7833	1	COIL, 24V DOUBLE SPADE
CH1	6995	1	CHARGER, 24V, 60HZ, 120VAC
D1	7948	1	DUAL DIODE ASSY
D2	6070	2	DIODE ASSY
D3	8368	1	DIODE ASSY - FAST ACTING
F1	7235	1	CIRCUIT BREAKER 15AMP
	7577	1	CIRCUIT BREAKER 15AMP (EE)
F2	7275	1	FUSE, 20 AMP
H1	7656	1	WIRE HARNESS - UPPER CONTROL
H3	7269	1	WIRE HARNESS LIMIT SWITCH
H4	7268	1	WIRE HARNESS - CYLINDER DOWN
H5	7225	1	WIRE HARNESS (MODEL 1332)(1-5)
	7267	1	WIRE HARNESS (MODEL 1632)(1-5)
H6	7266	1	WIRE HARNESS (MODEL 1332)(7-11)
	7226	1	WIRE HARNESS (MODEL 1632)(7-11)
H7	6805	1	WIRE HARNESS - VALVE MANIFOLD
H8	7830	1	WIRE HARNESS (MODEL 1332)(6,12-15)
	7829	1	WIRE HARNESS (MODEL 1632)(6,12-15)
H9	6764	1	WIRE HARNESS
H10	7218	1	CONNECTOR CABLE ASSEMBLY
H11	6687	1	CONNECTOR/CABLE ASSY
H12	6208	1	BATTERY JUMPER
H13	7657	1	WIRE HARNESS - CONTROL BOX - DM
M1	6194	1	MOTOR, 24 VOLT
Q1	7552	1	LEVEL SENSOR 4-1/2° (OPTION)
	7556	1	VOLTAGE REGULATOR
	7553	1	ALARM, TIP OVER
	7806	1	LIGHT, INDICATOR
Q2	8698	1	MOTION ALARM (12-48 VOLTS)
	6946	1	DUAL DIODE ASSY
H13	8708	1	MOTION ALARM HARNESS
Q3	7105	1	WARNING LIGHT (OPTION)
Q4	7909	1	HOUR METER (OPTION)
Q5	7099	1	BATTERY LEVEL INDICATOR (OPTION)
Q6	7103	1	DC-AC CONVERTER (24 VOLT) (OPTION)
	6207	2	#2 MOTOR JUMPER
	7130	1	CAPACITOR - .1 MICROFARE
Q7	8004	1	SWITCH, HORN
	8554	1	PLATFORM HORN 24V (OPTION)
	8608	1	WIRE HARNESS - HORN
	8612	1	WIRE HARNESS HORN SWITCH
R-1	5967	1	CONTACTOR, MOTOR START
S1	5630	2	SWITCH, TOGGLE E-STOP
S2	5230	2	SWITCH, TOGGLE UP/DOWN
S3	5979	1	SWITCH, SAFETY
S6	7647	1	SWITCH, WHISKER LIMIT
S7	5369	1	SWITCH, LIMIT MICRO
S8	6715	1	SWITCH, LIMIT, SLOW SPEED
S9	5936	1	SWITCH, KEY
S10	5694	2	SWITCH, TOGGLE DRIVE & STEER
TS1	5991	1	TERMINAL BLOCK
	7817	1	STRIP BACKING - 15 PST
TS2	6947	1	TERMINAL BLOCK
	7970	1	STRIP BACKING 1-22
UCB2	4940	1	TOGGLE CONTROL BOX W/ NO OPT.

ELECTRICAL WIRING DIAGRAM FOR ALL
DYNA-MITE MODELS 1332 & 1632
WITH A JOYSTICK CONTROL BOX



ITEM	PART NO.	QTY.	DESCRIPTION
C1	6163	9	COIL ONLY 24 VDC
C2	7833	1	COIL, 24V DOUBLE SPADE
CH1	6995	1	CHARGER, 24V, 60HZ, 120VAC
CB1	7831	1	CIRCUIT BOARD
D1	7948	1	DUAL DIODE ASSY
D2	6070	2	DIODE ASSY
D3	8368	1	DIODE ASSY - FAST ACTING
F1	7235	1	CIRCUIT BREAKER 15AMP
	7577	1	CIRCUIT BREAKER 15AMP (EE)
F2	7275	1	FUSE, 20 AMP
H1	7656	1	WIRE HARNESS - UPPER CONTROL
H2	7826	1	WIRE HARNESS
H3	7269	1	WIRE HARNESS LIMIT SWITCH
H4	7268	1	WIRE HARNESS - CYLINDER DOWN
H5	7225	1	WIRE HARNESS (MODEL 1332)X(1-5)
	7267	1	WIRE HARNESS (MODEL 1632)X(1-5)
H6	7266	1	WIRE HARNESS (MODEL 1332)X(7-11)
	7226	1	WIRE HARNESS (MODEL 1632)X(7-11)
H7	6805	1	WIRE HARNESS - VALVE MANIFOLD
H8	7830	1	WIRE HARNESS (MODEL 1332)X(6,12-15)
	7829	1	WIRE HARNESS (MODEL 1632)X(6,12-15)
H9	6764	1	WIRE HARNESS
H10	7218	1	CONNECTOR CABLE ASSEMBLY
H11	6687	1	CONNECTOR/CABLE ASSY
H12	6208	1	BATTERY JUMPER
M1	6194	1	MOTOR, 24 VOLT
D1	7552	1	LEVEL SENSOR 4-1/2° (OPTION)
	7556	1	VOLTAGE REGULATOR
	7553	1	ALARM, TIP OVER
	7806	1	LIGHT, INDICATOR
D2	8698	1	MOTION ALARM (12-48 VOLTS)
	6946	1	DUAL DIODE ASSY
H13	8708	1	MOTION ALARM HARNESS
D3	7105	1	WARNING LIGHT (OPTION)
D4	7909	1	HOUR METER (OPTION)
D5	7099	1	BATTERY LEVEL INDICATOR (OPTION)
D6	7103	1	DC-AC CONVERTER (24 VOLT) (OPTION)
	6207	2	#2 MOTOR JUMPER
	7130	1	CAPACITOR - .1 MICROFARE
D7	8004	1	SWITCH, HORN
	8554	1	PLATFORM HORN 24V (OPTION)
	8608	1	WIRE HARNESS - HORN
	8612	1	WIRE HARNESS HORN SWITCH
R-1	5967	1	CONTACTOR, MOTOR START
R-2	7835	1	RELAY, 24 VOLT
S1	5630	2	SWITCH, TOGGLE E-STOP
S2	5230	2	SWITCH, TOGGLE UP/DOWN
S3	5979	1	SWITCH, SAFETY
S4	8696	3	SWITCH, LIMIT MICRO
S5	8630	1	HANDLE GRIP ASSY
S6	7647	1	SWITCH, WHISKER LIMIT
S7	5369	1	SWITCH, LIMIT MICRO
S8	6715	1	SWITCH, LIMIT, SLOW SPEED
S9	5936	1	SWITCH, KEY
TS1	5991	1	TERMINAL BLOCK
	7817	1	STRIP BACKING - 15 PST
TS2	6947	1	TERMINAL BLOCK
	7970	1	STRIP BACKING 1-22
UCB1	3797	1	JOYSTICK CONTROL BOX W/NO OPT.

HYDRAULIC SCHEMATIC
macDYNA-MITE Models 1332 & 1632



*** NOTE: Refer to symbol chart for setting drive valve.
Refer to symbol chart for lift valve.**

Figure 22. Hydraulic Schematic.

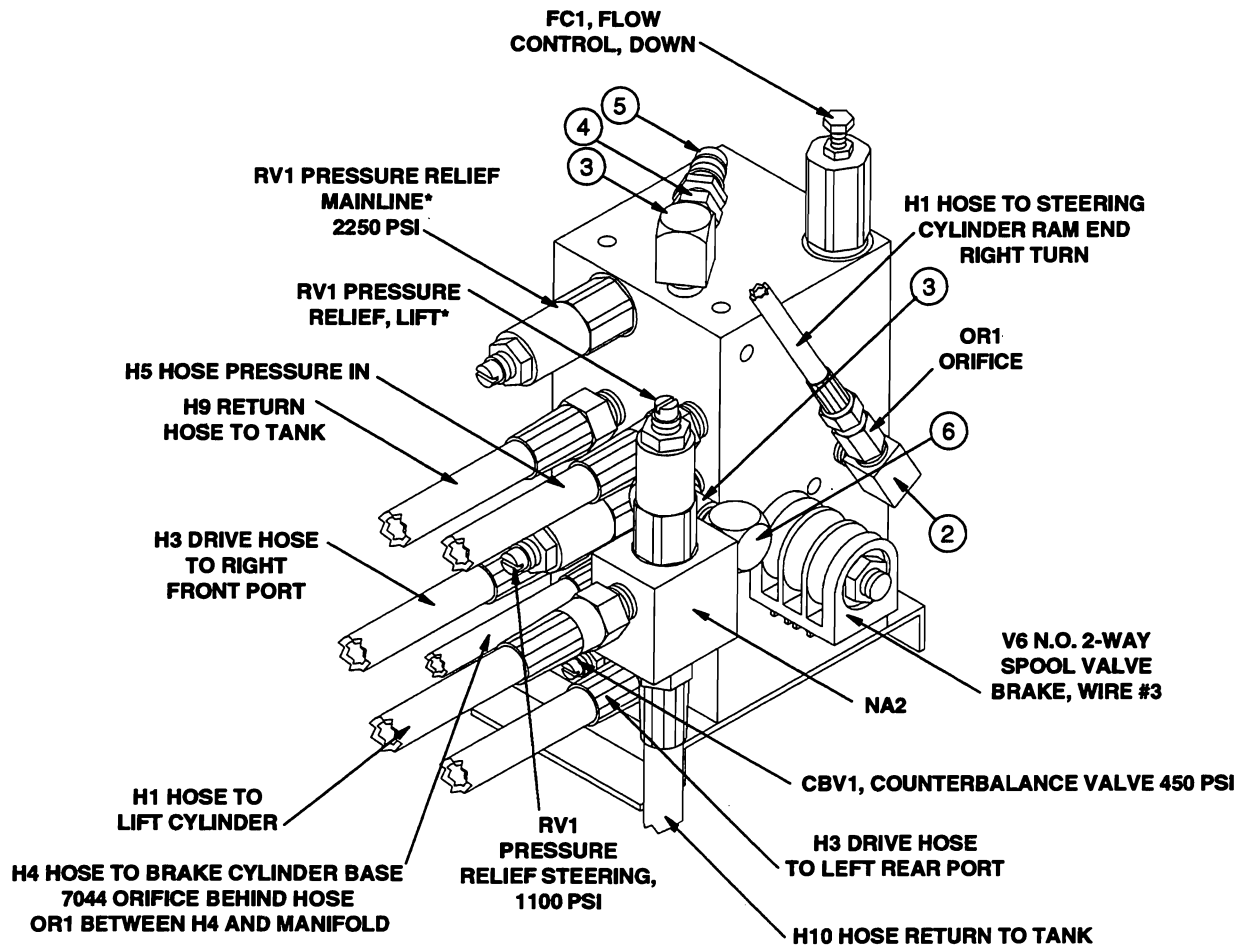
Symbol Identification for Figures 22, 23 and 24.
^{mac}**DYNA-MITE Models 1332 & 1632**

Qty.	Sym.	Description	Part No.
1	CBV-1	Valve, Counterbalance	6712
Ser.		Seal Kit	6806
1	FC1	Valve, Flow Control	5963
Ser.		Seal Kit	5475
1	H1	Hose, Steering	
		Clevis End	5705
1		Hose End	7066
1	H2	Hose, Lift	6351
Ser.		"O" Ring Kit, Special Swivel End	6675
2	H3	Hose, Drive	7006
1	H4	Hose, Brake	6718
1	H5	Hose, Pump to Manifold	6429
1	H9	Hose, Return	6225
1	H10	Hose, Return	5995
1	MA1	Manifold, Primary	3239
1	MA2	Manifold, Lift Release	11260
2	OR1	Orifice, Fitting, Extender, 0.046"	7044
Opt.	OR2	Orifice, Fitting, Extender, 0.036"	6107
1	OR3	Orifice, Brass, Decel.	2974
1	PFC1	Valve, Priority Flow Control (Standard) 0.75 GPM	7238
Opt.		Valve, Priority Flow Control (Special) 0.5 GPM	6189
Ser.		Seal Kit	5475

Qty.	Sym.	Description	Part No.
3	RV1	Valve, Relief	6316
Ser.		Seal Kit	5475
2	V1	Valve, 2-Way N.C., Poppet	6973
Ser.		Seal Kit	5475
2	V2	Valve, 4-Way, 3-Pos, Tandem	7976
Ser.		Seal Kit	6161
1	V3	Valve, 3-Way, 2-Pos	6976
Ser.		Seal Kit	5476
3	V6	Valve, 2-Way, N.O. Spool	6975
Ser.		Seal Kit	5475
1	1	Plate, Mounting	11189
2	2	Elbow, Street, 1/4", HP	5106
2	3	Elbow, Street, 3/8", HP	5472
1	4	Nipple, Reducing, 1/4" x 3/8", HP	7305
1	5	Quick Disconnect, Male	7297
1	6	Elbow, 90°, 3/8 NPTF	7255
9	7	Coil, 24VDC (w/Diode)	6163
4	8	Bolt, 1/4-20 x 3/4", Taptite (Not Shown)	5723
1	9	Bolt, 1/4-20 x 1/2", Taptite (Not Shown)	6455

Ser. = Service Usage

Model	Pressure Release Lift Valve Setting	Lift Capacity
1332	1,350 PSI	600#
1632	1,850 PSI	500#
Pressure Release Drive Valve Setting		
1332	2,250 PSI	
1632	2,250 PSI	



*See chart on page 33 for proper setting.
Figure 23.

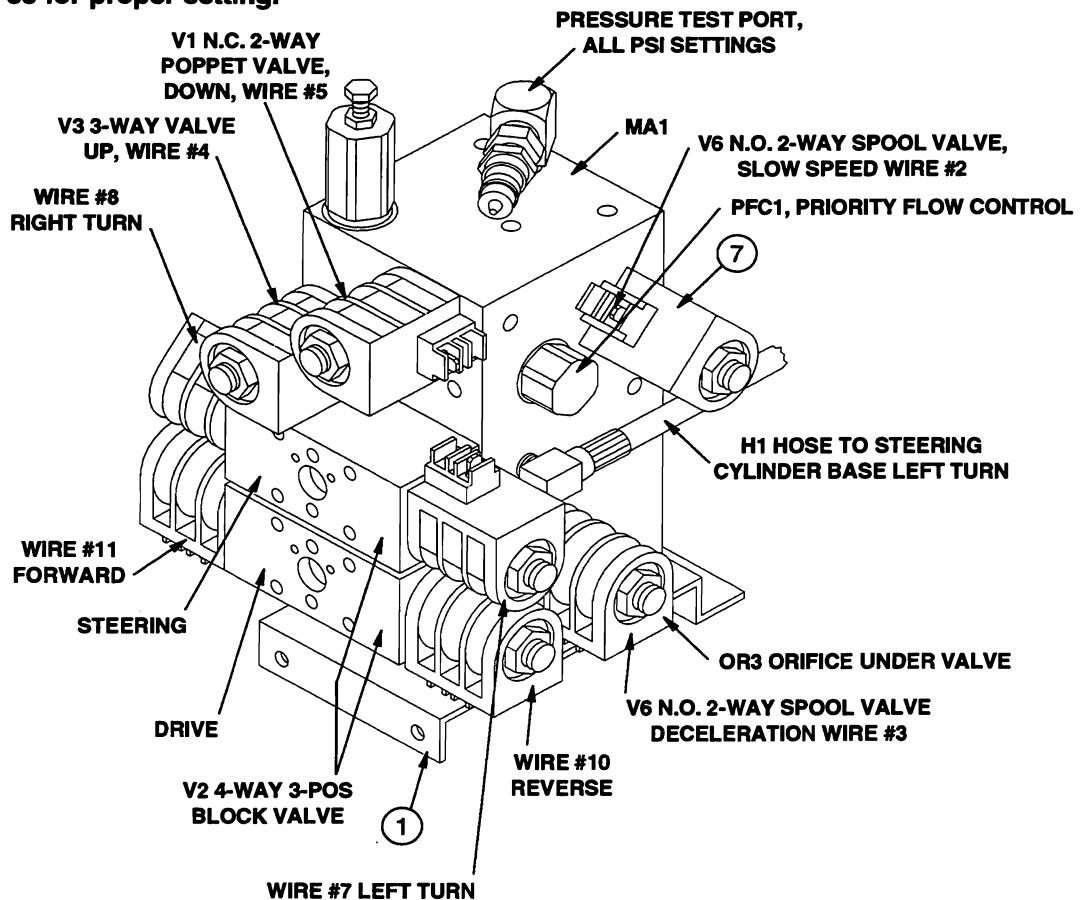


Figure 24.