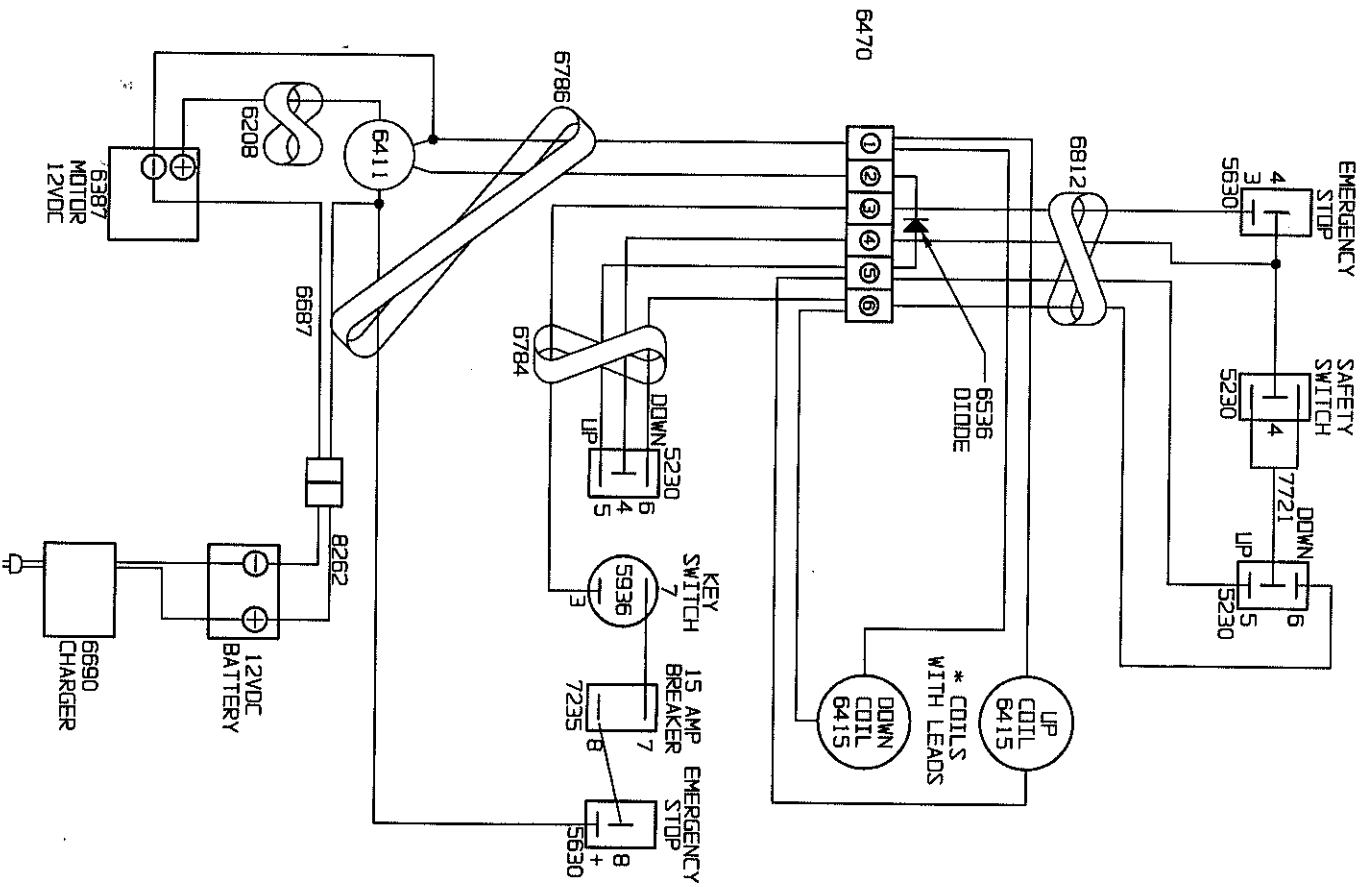


**ELECTRICAL WIRING DIAGRAM**  
**16D 12 VOLT**  
**24D 12 VOLT**



ART391R2  
 BMS608

Figure 9. Electrical Schematic DC Units

**ELECTRICAL WIRING DIAGRAM**  
16A  
24A

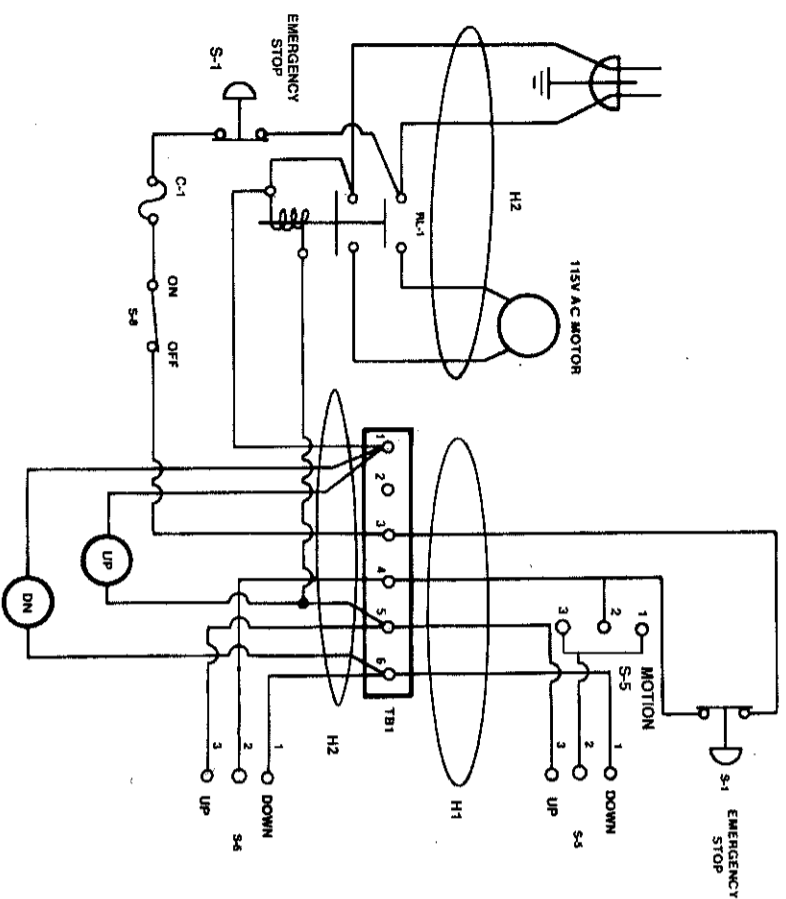


Figure 10.

NOTE: Switch wiring as seen from rear of switch.

Symbol Identification for Figure 10.

Symbol	Description	Part No.	Symbol	Description	Part No.
C-1		6190	S-5	Platform Control	5230
		5265	S-5	Lower Control Switch	5230
H-1	Wire Harness	6812	TB-1	Terminal Board	6470
H-2	Harness -AC-Control- Motor	6829		Coils	6528
RL-1	Relay / 220V	7666		AC Motor	6401
S-8	Key Switch	5936	S-5	Motion	5230
S-1	Emergency Stop: Switch Guard	5630			
		7622			

*Relay 220V 7776*

Figure 10. Electrical Schematics AC Units

**HYDRAULIC SCHEMATIC**  
MANIFOLD BLOCK (ALL MODELS)

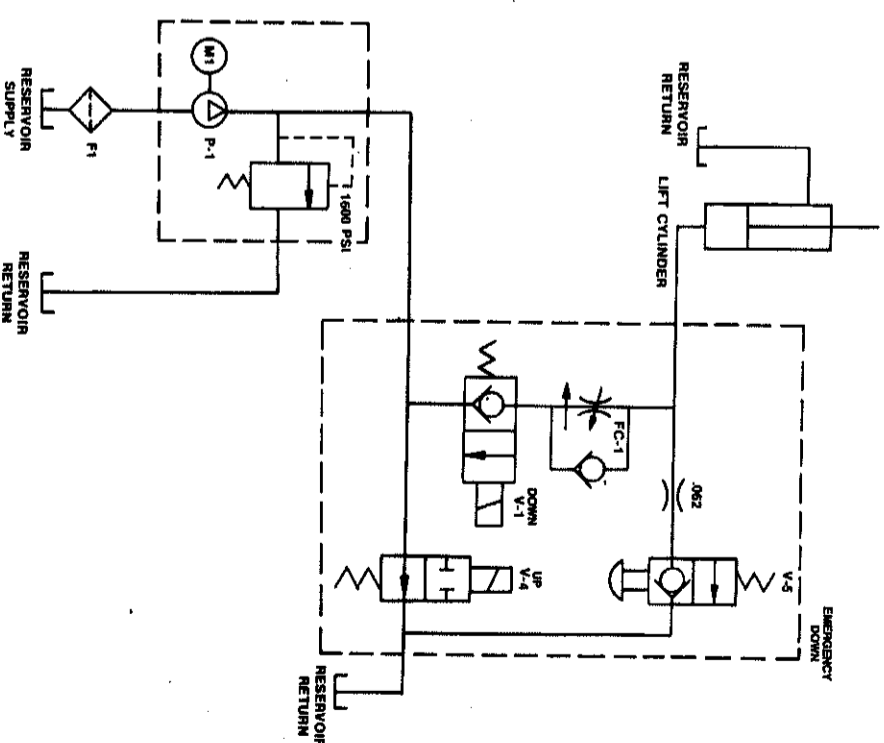


Figure 11.

Symbol Identification for Figure 11.

Symbol	Description	Part Number	DC	AC
F-1	Tank Filter	6377	6377	
FC-1	Flow Control "O" Ring Kit	5963	5963	5963
		5475	5475	5475
M-1	Motor	6387	6401	
P-1	Pump	6383	6402	
V-1	2-Way N.C. (Valve Only) "O" Ring Kit	6973	6973	6973
		5475	5475	5475
	Coil Only	6415	6528	6528
V-4	2-Way N.O. (Valve Only) "O" Ring Kit	6974	6974	6974
		5475	5475	5475
	Coil Only	6415	6528	6528
V-5	Manual Pull - Emergency Down "O" Ring Kit	5435	5435	5435
		5475	5475	5475

Figure 11. Hydraulic Schematic