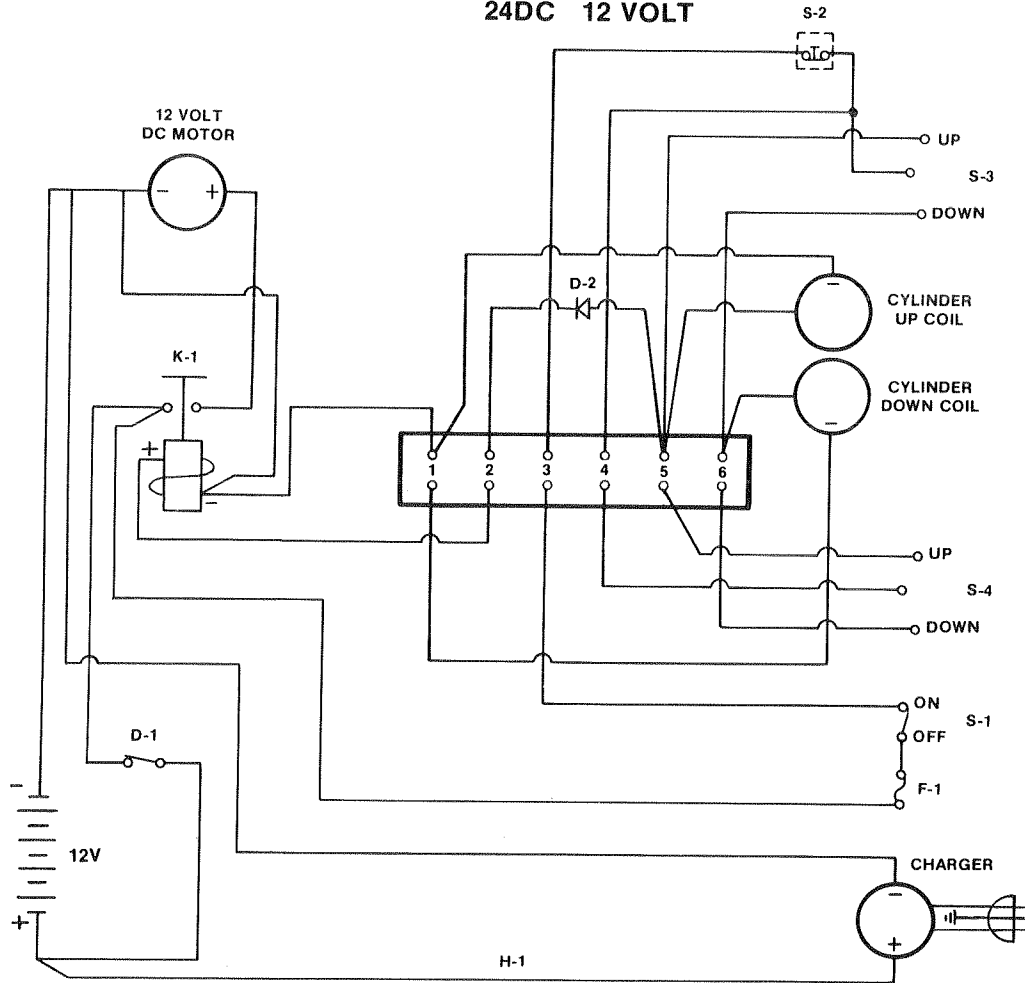


ELECTRICAL WIRING DIAGRAM

16DC 12 VOLT

24DC 12 VOLT



* NOTE: Switch wiring as seen from rear of switch.

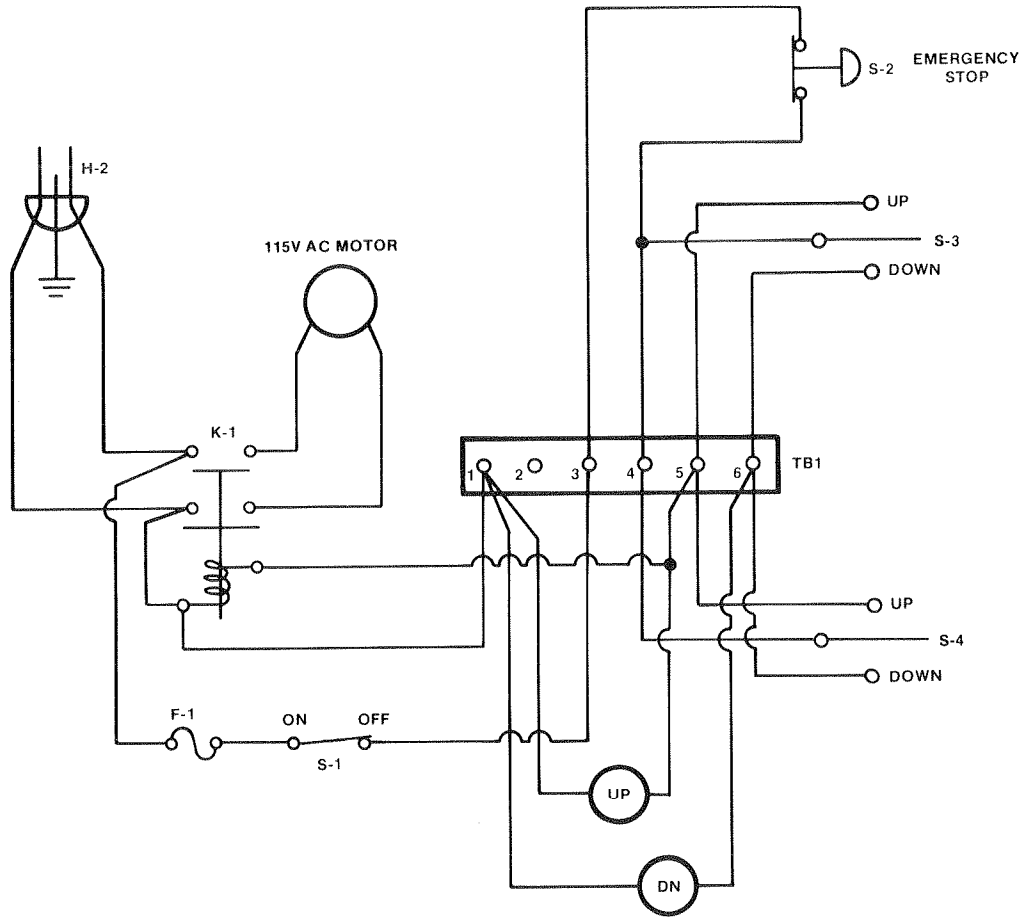
Figure 9.

Symbol Identification for Figure 9.

Symbol	Description	Part No.
F-1	Fuse	6190
D-1	Battery Disconnect	6468
D-2	Diode	6536
H-1	Wiring Harness	6494
K-1	Start Solenoid	6411
S-1	Key Switch	5936
S-2	Emergency Stop:	
	Body	6665
	Retainer	6666
	Contact	6667
S-3	Platform Control	5230
S-4	Lower Control Switch	5230
	Charger	6382
	Battery	6390
	12-Volt DC Motor	6387
	Coils	6415

ELECTRICAL WIRING DIAGRAM

16AC
24AC



* NOTE: Switch wiring as seen from rear of switch.

Figure 10.

Symbol Identification for Figure 10.

Symbol	Description	Part No.
F-1	Fuse	6190
H-1	Wire Harness	6508
H-2	AC Cord	6454
K-1	Relay	5397
S-1	Key Switch	5936
S-2	Emergency Stop:	
	Body	6665
	Retainer	6666
	Contactor	6667
S-3	Platform Control	5230
S-4	Lower Control Switch	5230
TB-1	Terminal Board	6470
	Coils	6528
	AC Motor	6401

HYDRAULIC SCHEMATIC MANIFOLD BLOCK (ALL MODELS)

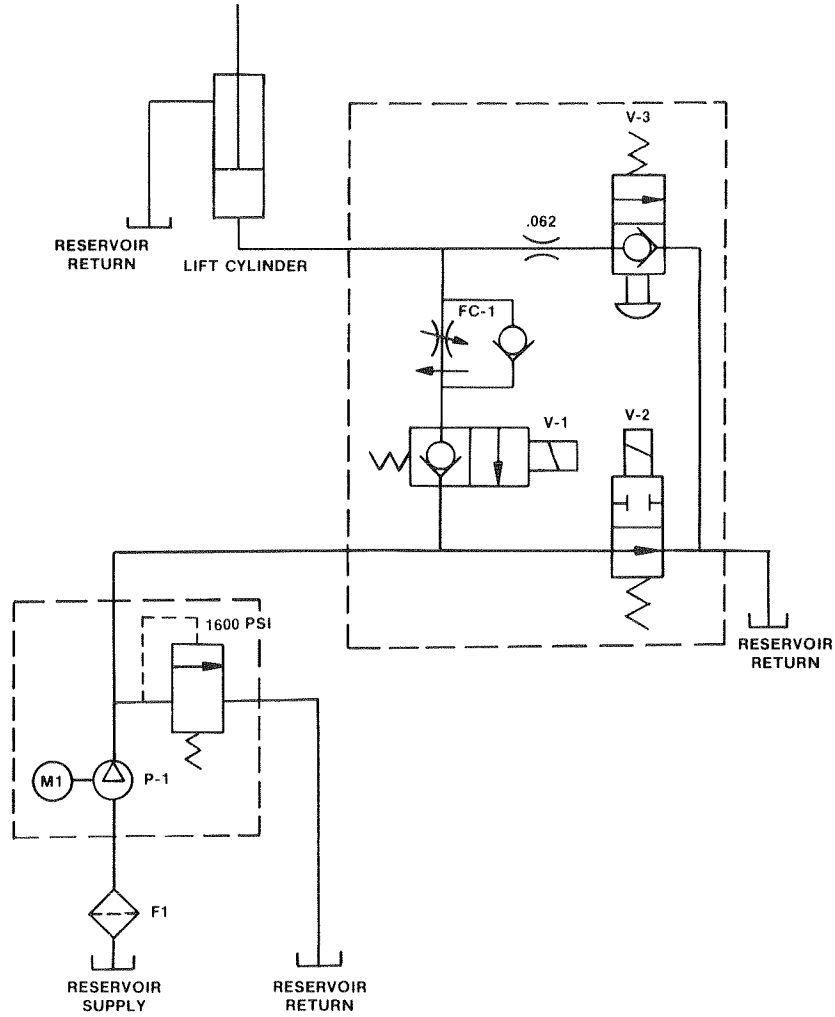


Figure 11.

Symbol Identification for Figure 11.

Symbol	Description	Part Number	
		DC	AC
F-1	Tank Filter	6377	6377
FC-1	Flow Control "O" Ring Kit	5963	5963
		5475	5475
M-1	Motor	6387	6401
P-1	Pump	6383	6402
V-1	2-Way N.C. Valve "O" Ring Kit Valve Only Coil Only	6453	6506
		5475	5475
		5964X	5964X
		6415	6528
V-2	2-Way N.O. Valve "O" Ring Kit Valve Only Coil Only	6452	6505
		5475	5475
		5962X	5962X
		6415	6528
V-3	Manual Pull - Emergency Down "O" Ring Kit	5435	5435
		5475	5475

HYDRAULIC MANIFOLD

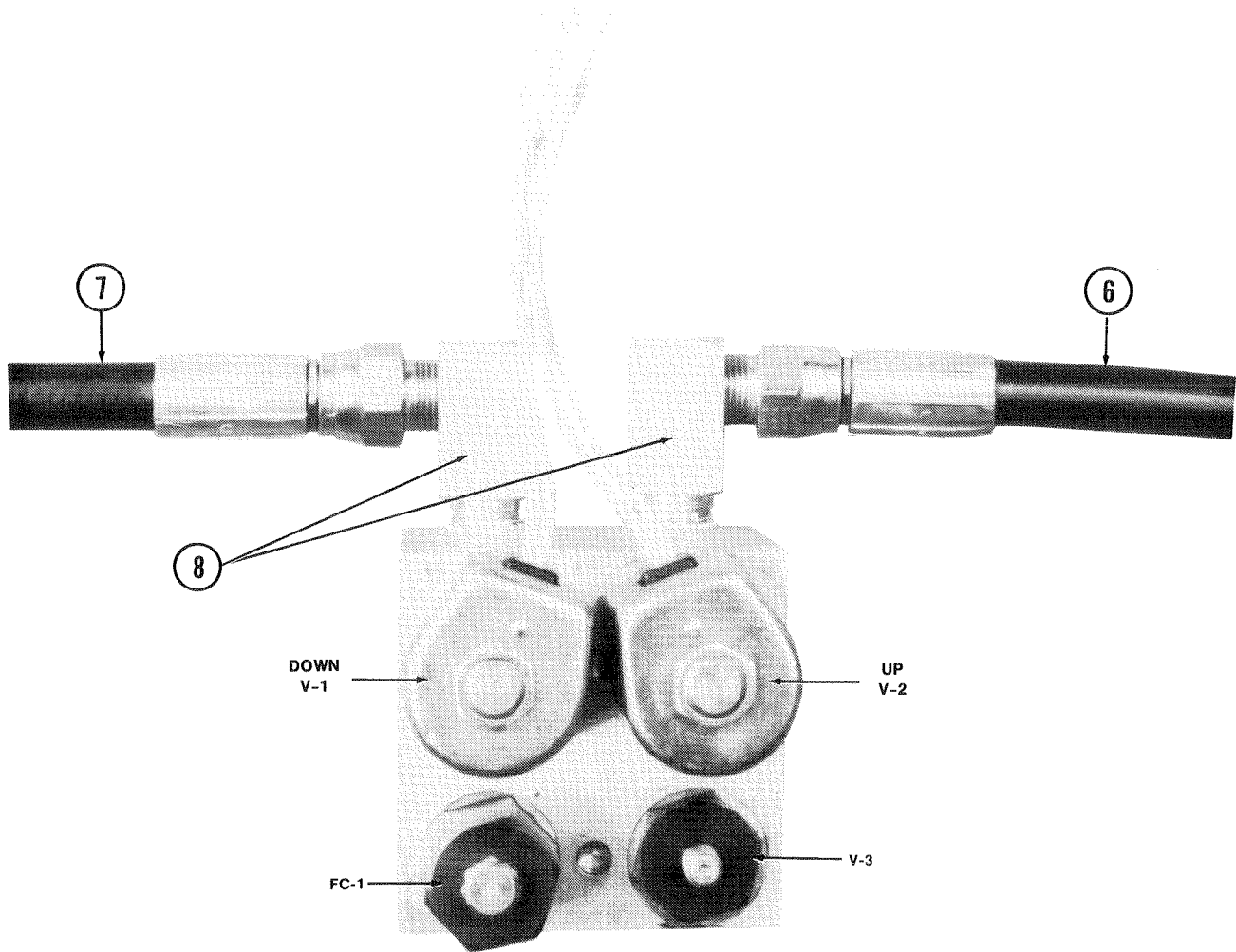


Figure 12.

Symbol Identification for Figure 12.

Symbol	Description	Part Number	
		AC	DC
V-1	2-Way Valve (N.C.)	6506	6453
V-2	2-Way Valve (N.O.)	6505	6452
V-3	Manual Pull Valve	5435	5435
FC-1	Flow Control Valve	5963	5963
	Coils Only	6528	6415
6	Hose - Tank to Manifold	6430	6430
7	Hose - Pump to Manifold	6429	6429
8	Fitting Elbow	6360	6360