

Error Indicator Readout



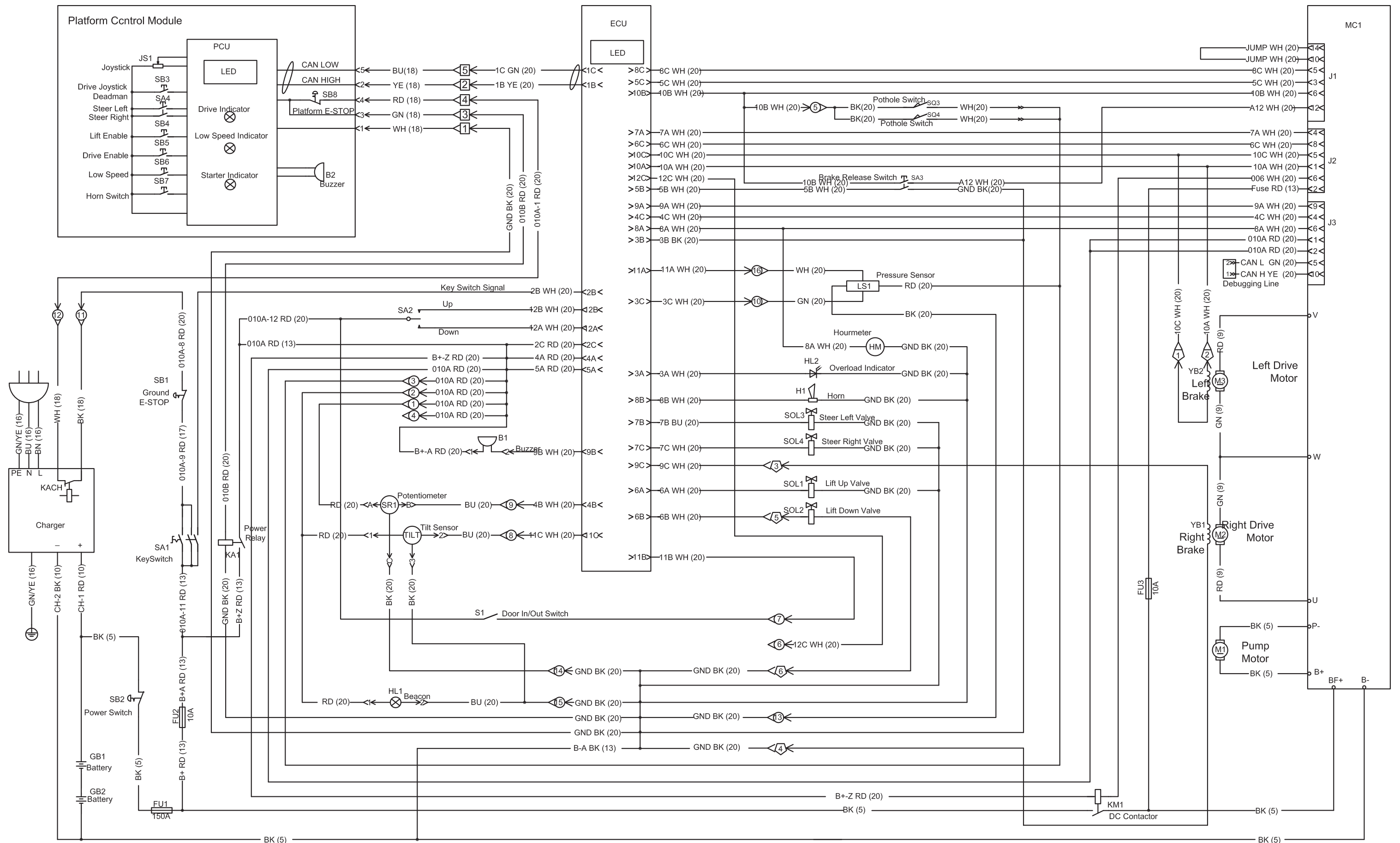
Art_5533

If the LED diagnostic readout displays an error code, such as LL, push in and turn the red Emergency Stop button to reset the system.

Fault	Description	Models	Solutions
01/10	System Initialization Fault	All Models	Check the ECU.
02/20	System Communication Fault	All Models	Check the platform control, wiring on platform connector, ECU, battery, and relay on ground control.
03	Invalid Option Setting	All Models	Reset the option code. See Service manual for instructions.
12	Chassis Up or Down Switch ON at power-up Fault	All Models	Check the wiring on toggle switch, and the toggle switch.
18	Pothole Guard Fault	All Models	Check the pothole board and switches. If stowed, check limit switch.
31	Pressure Sensor Fault	Micro 19	Check option code. See Service manual for instructions.
32	Angle Sensor Fault	All Models > 2020 With Overload	Check wiring to angle sensor for normal voltage range < 2020, 1.9-3.8V, then check the option code.
42	Left turn switch ON at power-up	All Models	Check the left steer button, and the platform controller.
43	Right Turn Switch ON at power-up	All Models	Check the right steer button, and the platform controller.
46	Joystick Enable Switch ON at power-up	All Models	Wait several seconds when turning on the lift, then check the joystick dead-man switch.
47	Joystick not in neutral at power-up	All Models	Check the joystick, and the platform controller.
52	Drive Forward Coil Fault	All Models	Check the option code. See Service manual for instructions.
53	Drive Reverse Coil Fault	All Models	Check the option code. See Service manual for instructions.
54	Lift Up Coil Fault	All Models	Check the lift solenoid and wiring.
55	Lift Down Coil fault	All Models	Check the down solenoid and wiring, and the scissor harness for crushed or pinched wires.
56	Right Turn Coil Fault	All Models	Check the right steering solenoid and wiring.
57	Left Turn Coil Fault	All Models	Check the left steering solenoid and wiring.
58	General Brake Coil Fault - Brakes about 46 ohms	All Models	Check the brake module and wiring, brakes and wiring, and the battery voltage.
60	Motor Controller Fault	All Models	Replace the motor controller.
61	Motor Controller Sensor Fault	All Models	Check the drive motor and wiring, and the drive motor controller and wiring.
62	Motor Controller Hardware Failsafe Fault	All Models	Cycle power, then replace the Motor Controller.
63	Motor Controller Output Fault	All Models	Check the drive motor and wiring for shorts, and the drive motor controller and wiring.

64	Motor Controller SRO Fault	All Models	Replace motor controller
65	Motor Controller Throttle Fault	All Models	Replace motor controller
66	Motor Controller Emergency Reverse Fault	All Models	Replace motor controller
67	Motor Controller HPD Fault	All Models	Replace motor controller, check contactor, replace ECU.
68	Low Voltage Fault	All Models	Check battery voltage and charge batteries if necessary, check battery connections, connection from ECU to PCU, then the voltage to the ECU and PCU.
69	High Neutral Current Fault	All Models	Motor seized - This message comes just before other faults but should be ignored in those cases.
70	Steer Input Out of Range	All Models	Check for loose wires on motor controller, replace motor controller.
71	Motor Controller Main Contactor Fault	All Models	Check wiring to contactor, white and black wire could be off, check drive motor and wiring, and motor controller and wiring. Replace contractor.
72	Motor Controller Over Voltage Fault	All Models	Check battery voltage with battery charger off, cycle power to machine, replace motor controller.
73	Motor Controller Thermal Cutback Fault	All Models	Drive/Lift Motor may be overheating so let motor cool down, cycle power to reset Motor controller, replace motor controller.
74	Motor Controller Motor Fault	All Models	Check connections at motors "motor open", cycle power to the lift, and replace motor controller.
75	Motor Controller Pump Motor Fault	All Models	Check connections to the Pump Motor, cycle power to the lift, and replace motor controller.
76	Motor Controller Left Drive Motor Fault	All Models	Check connections to the motors, cycle power to the lift, and replace motor controller.
77	Motor Controller Right Drive Motor Fault	All Models	Check connections to the motors, cycle power to the lift, and replace motor controller.
78	Pump Motor Short Fault: 0.8-1.4 ohms	All Models	Check connections to the pump motor, cycle power to the lift, and replace motor controller.
79	Left Drive Motor Short Fault	1930SE Only	Check the left drive motor and wiring, and the ZAPI drive controller and wiring.
	(Should be 0.5-2.0 ohms)	Micro 19	Swap wires on drive motors: if code changes it's in wiring or motor and if code doesn't change it's in motor controller.
80	Over 80% Load Warning	All Models	Platform is getting close to limit of weight. > 2020 with overload
81	Right Drive Motor Short	1930SE/Micro	Check the right drive motor and wiring, and motor controller and wiring.
82	Right Brake Coil - Brakes about 46 ohms	1930SE/Micro	Check battery voltage, contactor, wiring to brakes, wiring to drive motors, motor controller and wiring.
		All Models	Check battery voltage, right motor brake and wiring, brake module and wiring, and contactor.
83	Left Brake Coil - Brakes about 46 ohms	1930SE/Micro	Check battery voltage, contactor, wiring on brakes, wiring to drive motors, motor controller and wiring.
		All Models	Check battery voltage, left motor brake and wiring, brake module and wiring, and contactor.

85	Brake Release Switch Closed	1930SE/Micro	Turn brake release switch off. Replace brake release switch.
86	Raised Brake Release Fault	1930SE Only	Brake release switch engaged.
87	Brake Release Switch Fault	1930SE Only	Brake release switch open.
89	Drive Motor Field Open	All Models	Check wiring on motors and motor controller.
91	Left Drive Motor Short	All Models	Check wiring to motor and motor controller.
92	Right Drive Motor Short	All Models	Check wiring to motor and motor controller.
99	Over 99% Load Warning	All Models	Platform has reached its weight capacity.
OL	Platform Overloaded	All Models	Remove the excess load immediately. > 2020 with overload.
LL	Machine Tilted Beyond Safe Limits Fault	All Models	Check to see if machine is tilted, then check wiring to tilt sensor and the tilt sensor.
CH	NOT A FAULT CODE	All Models	Indicates that key switch is in base controls.



Electrical Schematic

- ⊗=6 Position Connector LOC1
- ⊙=16 Position Connector
- ⊠=5 Position Connector LOC2

Hydraulic Schematic

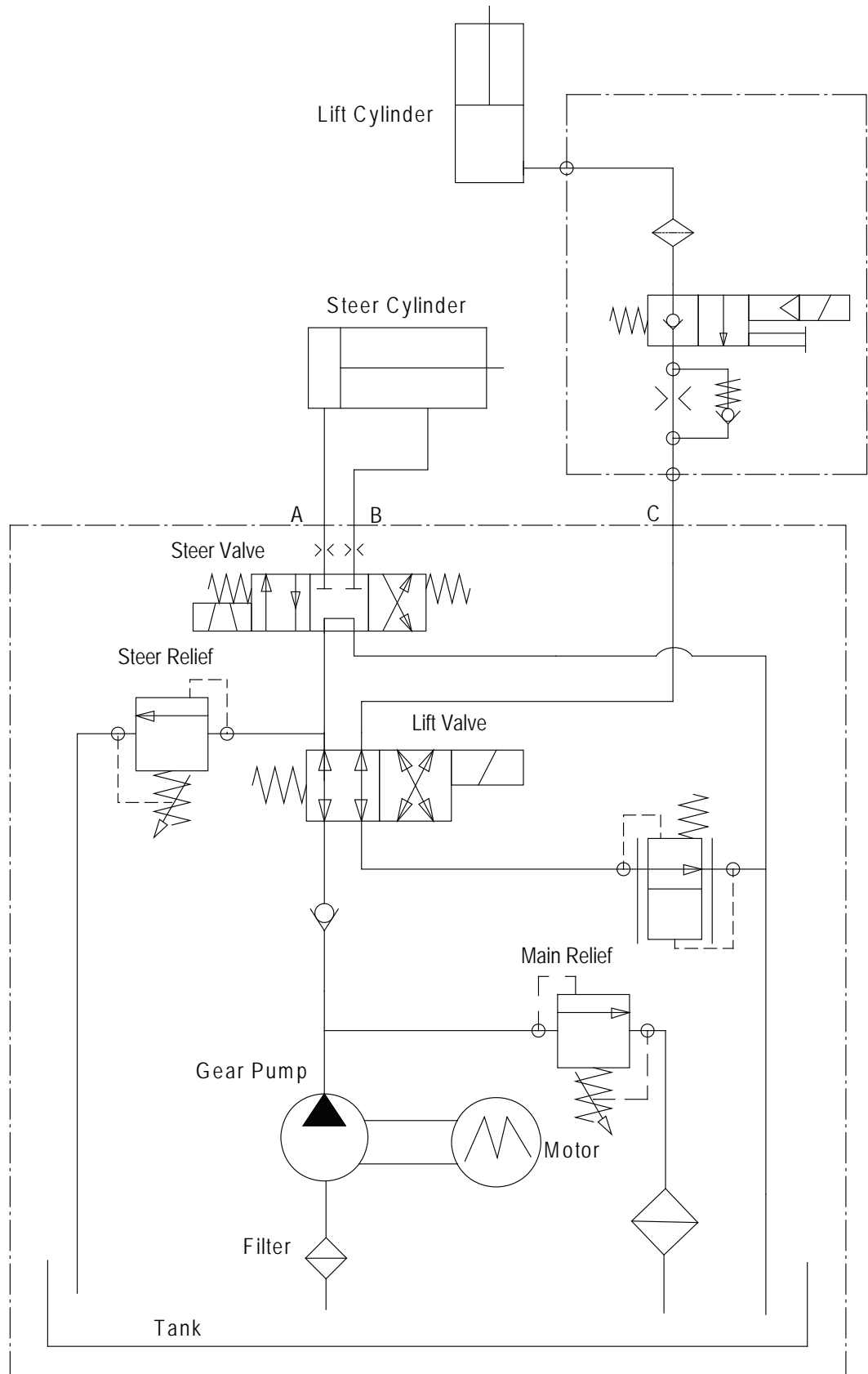



ILLUSTRATION No.
ART_5053

1330SE HYDRAULIC SCHEMATIC

Hydraulic Unit

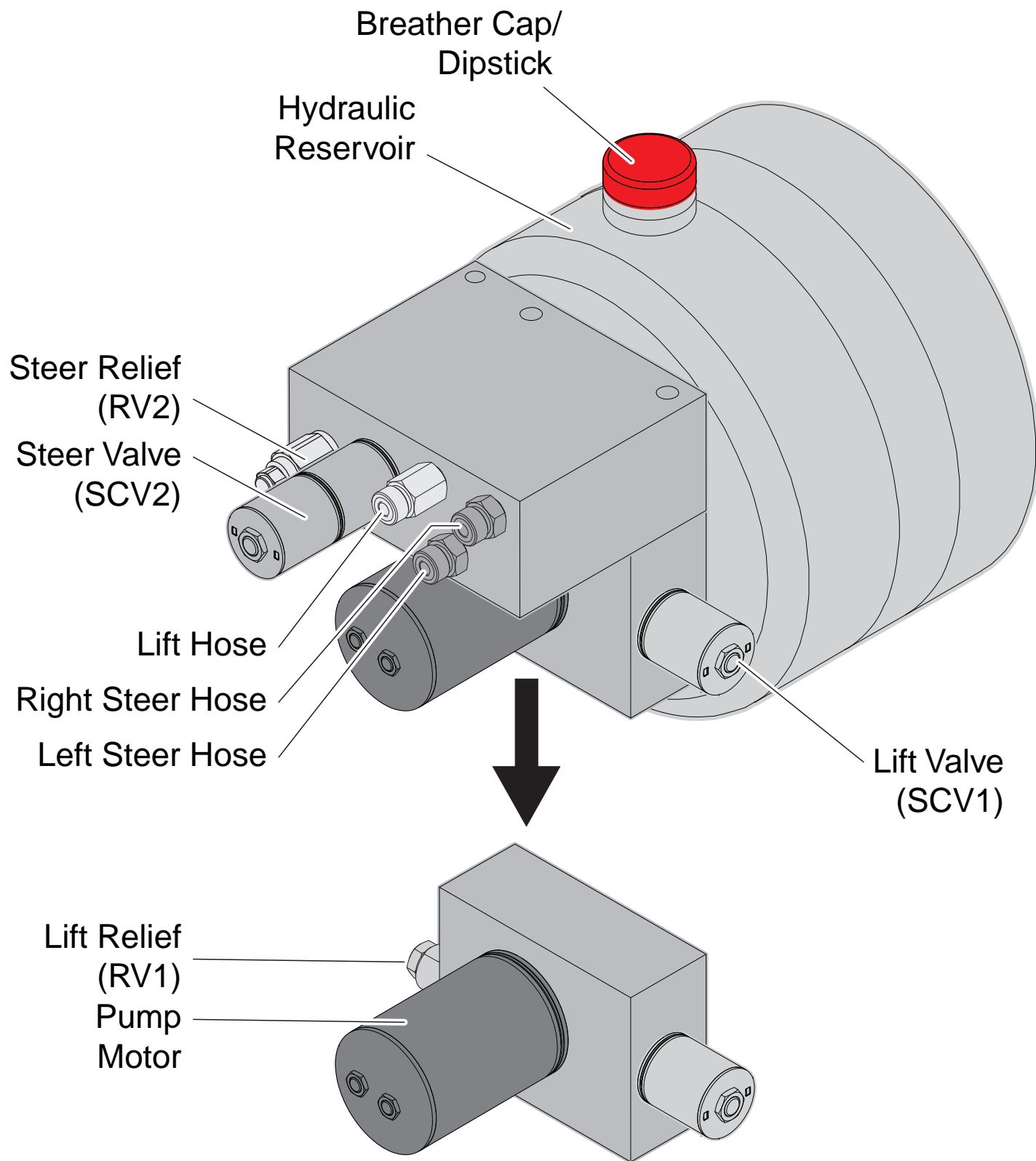



ILLUSTRATION No.
ART_5066

1330SE HYDRAULIC UNIT